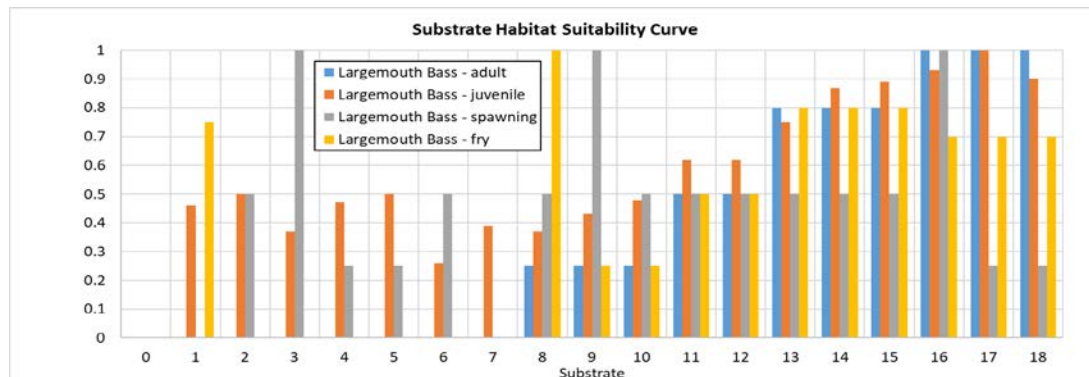
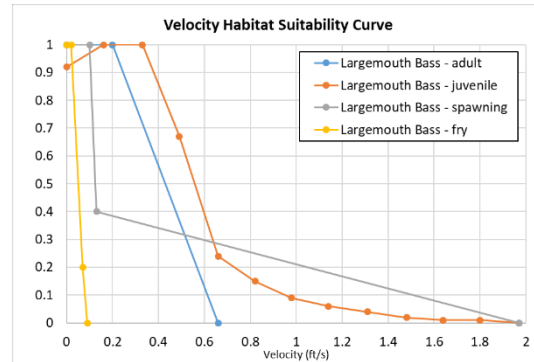
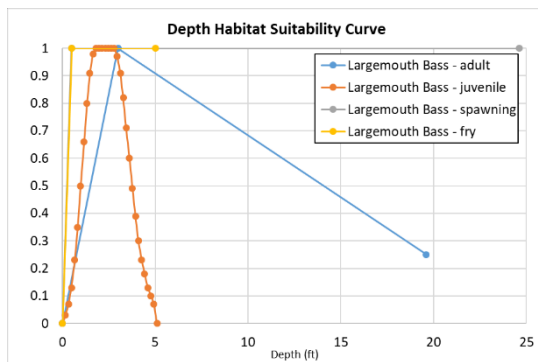


LARGEMOUTH BASS (ADULT/JUVENILE/SPAWNING/FRY) MICROPTERUS SALMOIDES



Physical Habitat



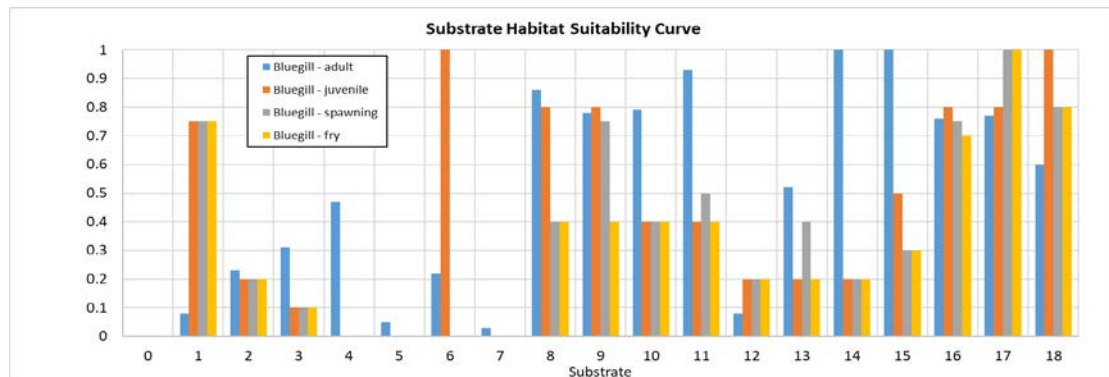
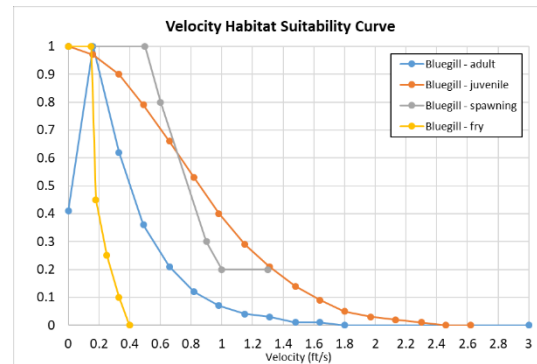
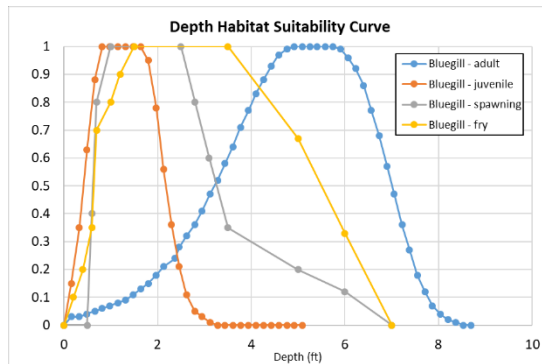
Substrate Coding	
1 No cover and silt or terrestrial vegetation	10 Overhead vegetation and cobble
2 No cover and sand	11 Overhead vegetation and small boulder, boulder, angled bedrock, or woody debris
3 No cover and gravel	12 Instream cover and cobble
4 No cover and cobble	13 Instream cover and small boulder, boulder, angles bedrock, or woody debris
5 No cover and small boulder	14 Proximal instream cover and cobble
6 No cover and boulder, angles bedrock or woody debris	15 Proximal instream cover and small boulder, boulder, angles bedrock, or woody debris
7 No cover and mud or flat bedrock	16 Instream cover or proximal instream cover and gravel
8 Overhead vegetation and terrestrial vegetation	17 Overhead vegetation or instream cover or proximal instream cover and silt or sand
9 Overhead vegetation and gravel	18 Aquatic vegetation - macrophytes

Source: USFWS "Bluebook" series (1970s,1980s) with habitat values modified by Dr. J. Gore

BLUEGILL (ADULT/JUVENILE/SPAWNING/FRY) LEPOMIS MACROCHIRUS



Physical Habitat



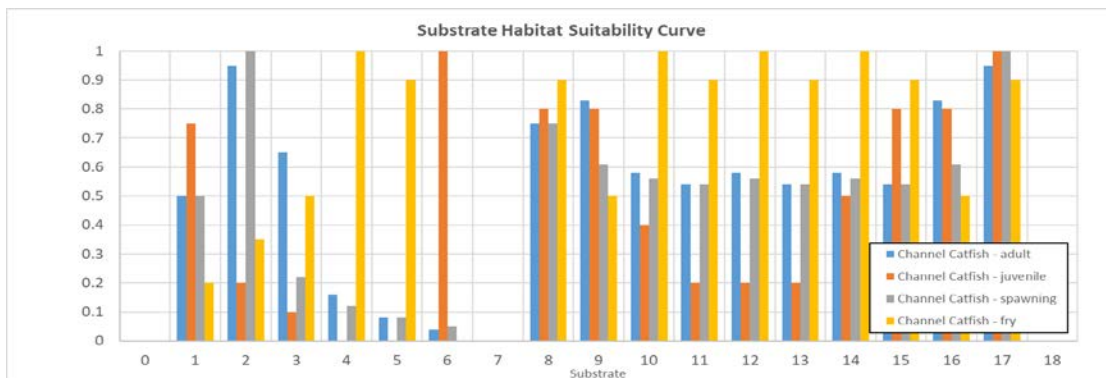
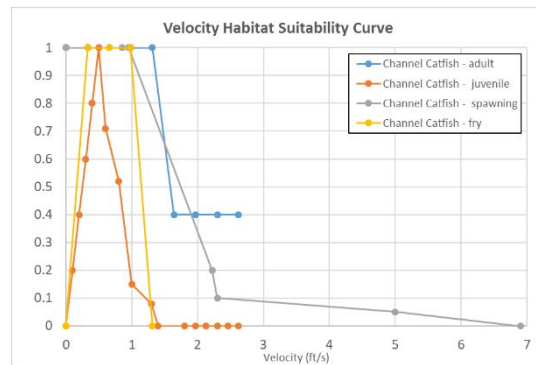
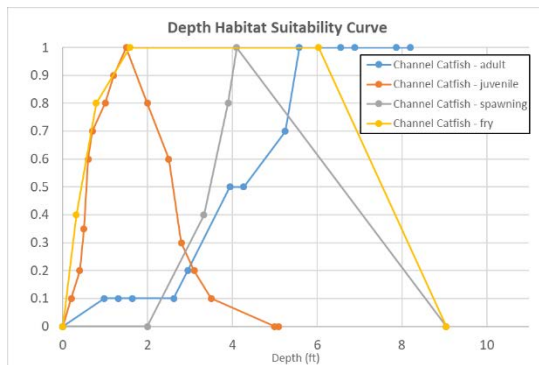
Substrate Coding	
1 No cover and silt or terrestrial vegetation	10 Overhead vegetation and cobble
2 No cover and sand	11 Overhead vegetation and small boulder, boulder, angled bedrock, or woody debris
3 No cover and gravel	12 Instream cover and cobble
4 No cover and cobble	13 Instream cover and small boulder, boulder, angles bedrock, or woody debris
5 No cover and small boulder	14 Proximal instream cover and cobble
6 No cover and boulder, angles bedrock or woody debris	15 Proximal instream cover and small boulder, boulder, angles bedrock, or woody debris
7 No cover and mud or flat bedrock	16 Instream cover or proximal instream cover and gravel
8 Overhead vegetation and terrestrial vegetation	17 Overhead vegetation or instream cover or proximal instream cover and silt or sand
9 Overhead vegetation and gravel	18 Aquatic vegetation - macrophytes

HSCs Source: USFWS "Bluebook" series (1970s,1980s) with habitat values modified by Dr. J. Gore

CHANNEL CATFISH (ADULT/JUVENILE/SPAWNING/FRY) ICTALURUS PUNCTATUS



Physical Habitat



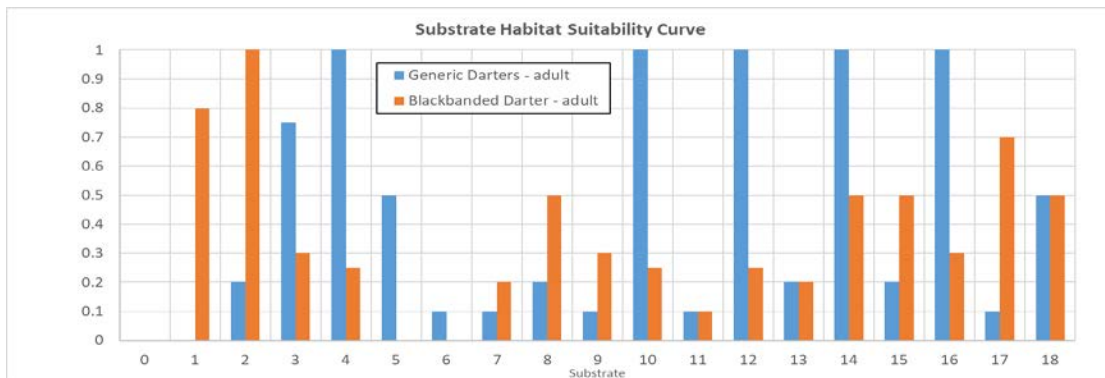
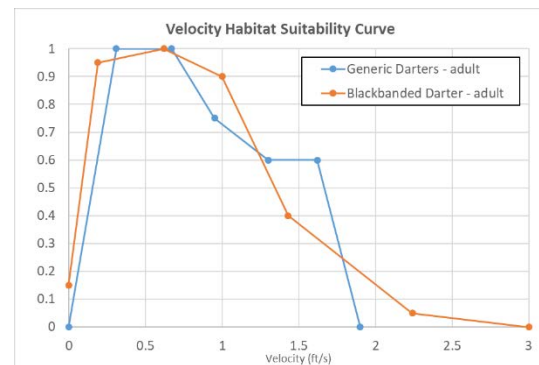
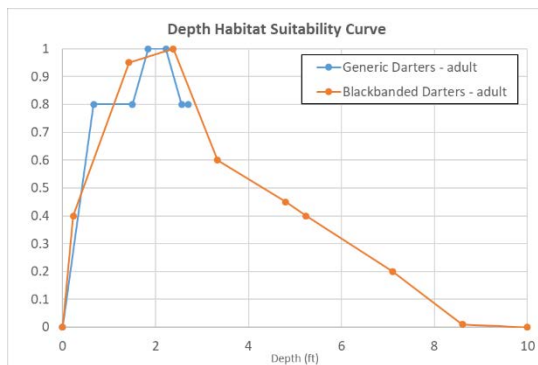
Substrate Coding	
1 No cover and silt or terrestrial vegetation	10 Overhead vegetation and cobble
2 No cover and sand	11 Overhead vegetation and small boulder, boulder, angled bedrock, or woody debris
3 No cover and gravel	12 Instream cover and cobble
4 No cover and cobble	13 Instream cover and small boulder, boulder, angles bedrock, or woody debris
5 No cover and small boulder	14 Proximal instream cover and cobble
6 No cover and boulder, angles bedrock or woody debris	15 Proximal instream cover and small boulder, boulder, angles bedrock, or woody debris
7 No cover and mud or flat bedrock	16 Instream cover or proximal instream cover and gravel
8 Overhead vegetation and terrestrial vegetation	17 Overhead vegetation or instream cover or proximal instream cover and silt or sand
9 Overhead vegetation and gravel	18 Aquatic vegetation - macrophytes

HSCs Source: USFWS "Bluebook" series (1970s,1980s) with habitat values modified by Dr. J. Gore

DARTERS (GENERIC/BLACKBANDED) PERCINA NIGROFASCIATA



Physical Habitat



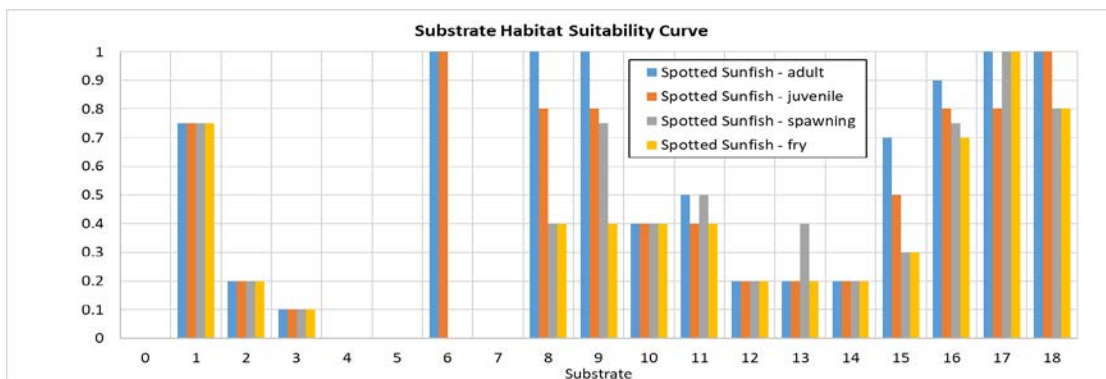
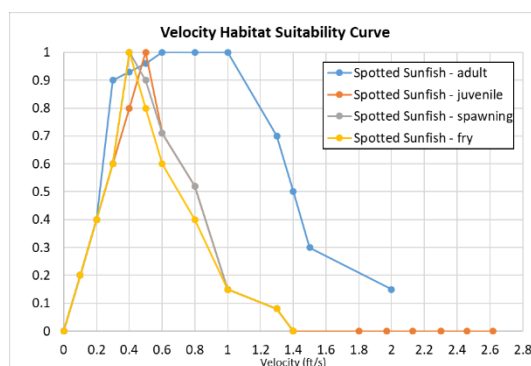
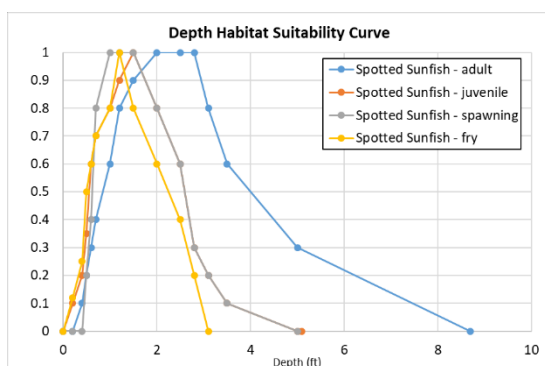
Substrate Coding	
1 No cover and silt or terrestrial vegetation	10 Overhead vegetation and cobble
2 No cover and sand	11 Overhead vegetation and small boulder, boulder, angled bedrock, or woody debris
3 No cover and gravel	12 Instream cover and cobble
4 No cover and cobble	13 Instream cover and small boulder, boulder, angles bedrock, or woody debris
5 No cover and small boulder	14 Proximal instream cover and cobble
6 No cover and boulder, angles bedrock or woody debris	15 Proximal instream cover and small boulder, boulder, angles bedrock, or woody debris
7 No cover and mud or flat bedrock	16 Instream cover or proximal instream cover and gravel
8 Overhead vegetation and terrestrial vegetation	17 Overhead vegetation or instream cover or proximal instream cover and silt or sand
9 Overhead vegetation and gravel	18 Aquatic vegetation - macrophytes

HSCs Source: USFWS "Bluebook" series (1970s,1980s) with habitat values modified by Dr. J. Gore

SPOTTED SUNFISH (ADULT/JUVENILE/SPAWNING/FRY) LEPOMIS PUNCTATUS



Physical Habitat



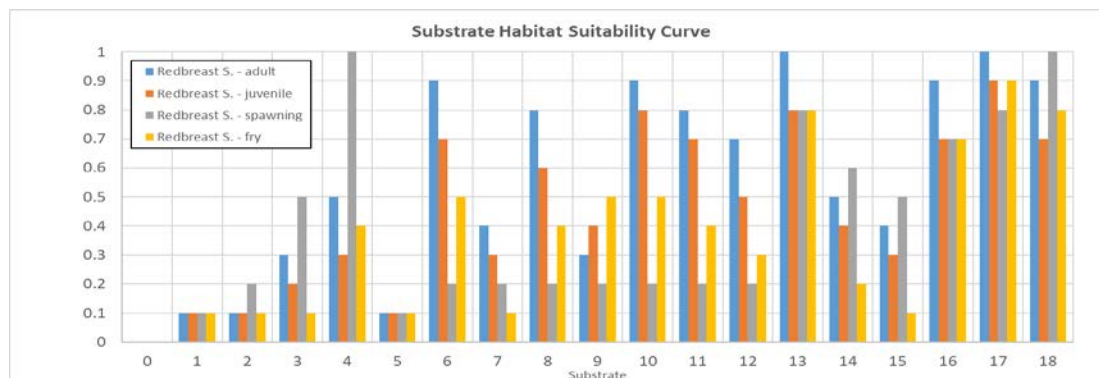
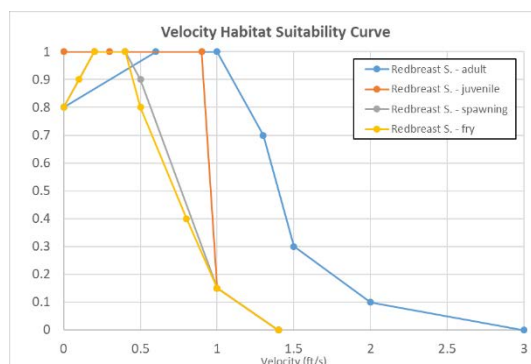
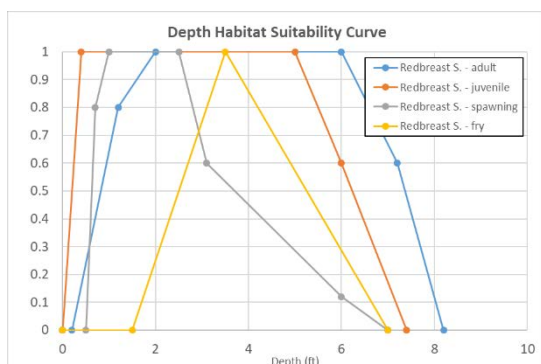
Substrate Coding	
1 No cover and silt or terrestrial vegetation	10 Overhead vegetation and cobble
2 No cover and sand	11 Overhead vegetation and small boulder, boulder, angled bedrock, or woody debris
3 No cover and gravel	12 Instream cover and cobble
4 No cover and cobble	13 Instream cover and small boulder, boulder, angles bedrock, or woody debris
5 No cover and small boulder	14 Proximal instream cover and cobble
6 No cover and boulder, angles bedrock or woody debris	15 Proximal instream cover and small boulder, boulder, angles bedrock, or woody debris
7 No cover and mud or flat bedrock	16 Instream cover or proximal instream cover and gravel
8 Overhead vegetation and terrestrial vegetation	17 Overhead vegetation or instream cover or proximal instream cover and silt or sand
9 Overhead vegetation and gravel	18 Aquatic vegetation - macrophytes

HSCs Source: USFWS "Bluebook" series (1970s,1980s) with habitat values modified by Dr. J. Gore

REDBREAST SUNFISH (ADULT/JUVENILE/SPAWNING/FRY) LEPOMIS AURITUS



Physical Habitat



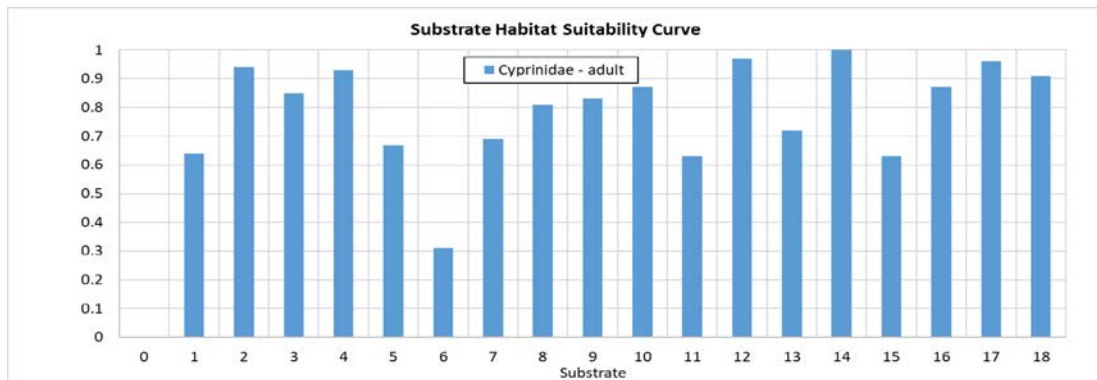
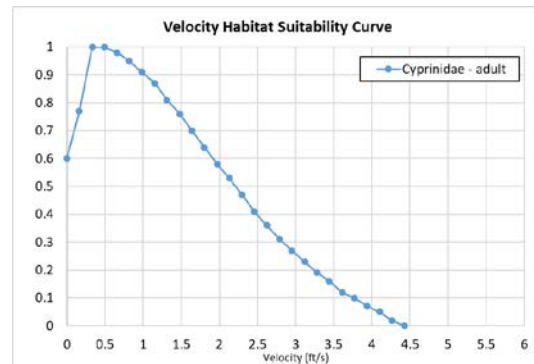
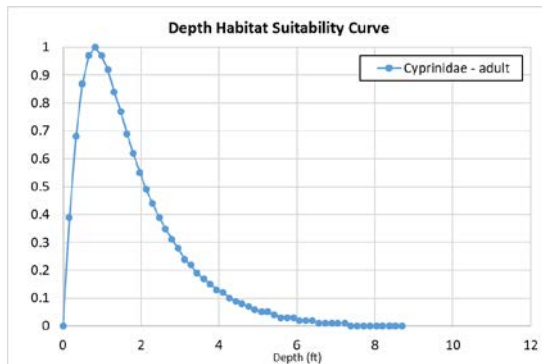
Substrate Coding	
1 No cover and silt or terrestrial vegetation	10 Overhead vegetation and cobble
2 No cover and sand	11 Overhead vegetation and small boulder, boulder, angled bedrock, or woody debris
3 No cover and gravel	12 Instream cover and cobble
4 No cover and cobble	13 Instream cover and small boulder, boulder, angles bedrock, or woody debris
5 No cover and small boulder	14 Proximal instream cover and cobble
6 No cover and boulder, angles bedrock or woody debris	15 Proximal instream cover and small boulder, boulder, angles bedrock, or woody debris
7 No cover and mud or flat bedrock	16 Instream cover or proximal instream cover and gravel
8 Overhead vegetation and terrestrial vegetation	17 Overhead vegetation or instream cover or proximal instream cover and silt or sand
9 Overhead vegetation and gravel	18 Aquatic vegetation - macrophytes

HSCs Source: USFWS "Bluebook" series (1970s,1980s) with habitat values modified by Dr. J. Gore

CYPRINIDAE – ADULT



Physical Habitat

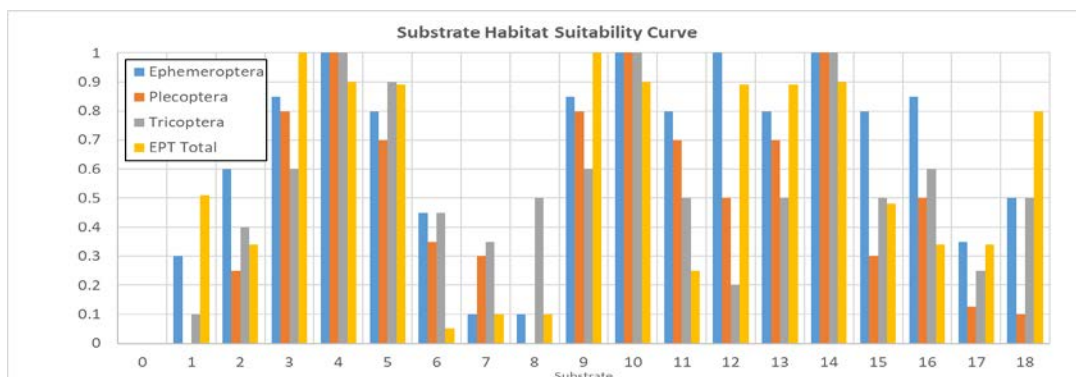
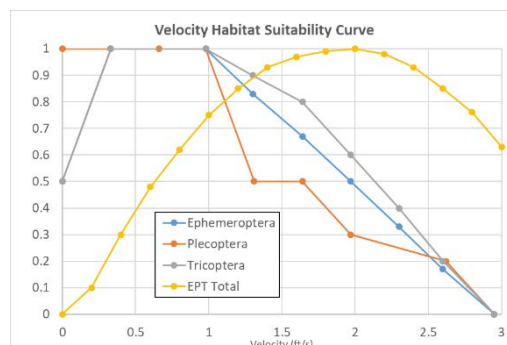
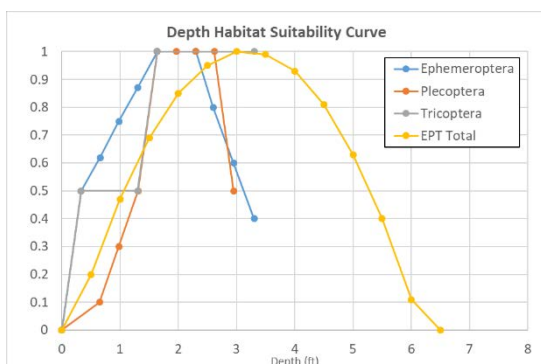


Substrate Coding	
1 No cover and silt or terrestrial vegetation	10 Overhead vegetation and cobble
2 No cover and sand	11 Overhead vegetation and small boulder, boulder, angled bedrock, or woody debris
3 No cover and gravel	12 Instream cover and cobble
4 No cover and cobble	13 Instream cover and small boulder, boulder, angles bedrock, or woody debris
5 No cover and small boulder	14 Proximal instream cover and cobble
6 No cover and boulder, angles bedrock or woody debris	15 Proximal instream cover and small boulder, boulder, angles bedrock, or woody debris
7 No cover and mud or flat bedrock	16 Instream cover or proximal instream cover and gravel
8 Overhead vegetation and terrestrial vegetation	17 Overhead vegetation or instream cover or proximal instream cover and silt or sand
9 Overhead vegetation and gravel	18 Aquatic vegetation - macrophytes

HSCs Source: USFWS "Bluebook" series (1970s,1980s) with habitat values modified by Dr. J. Gore

**EPHEMEROPTERA / PLECOPTERA / TRICHOPTERA / EPT TOTAL
BENTHIC MACROINVERTEBRATE COMMUNITY**

Physical Habitat

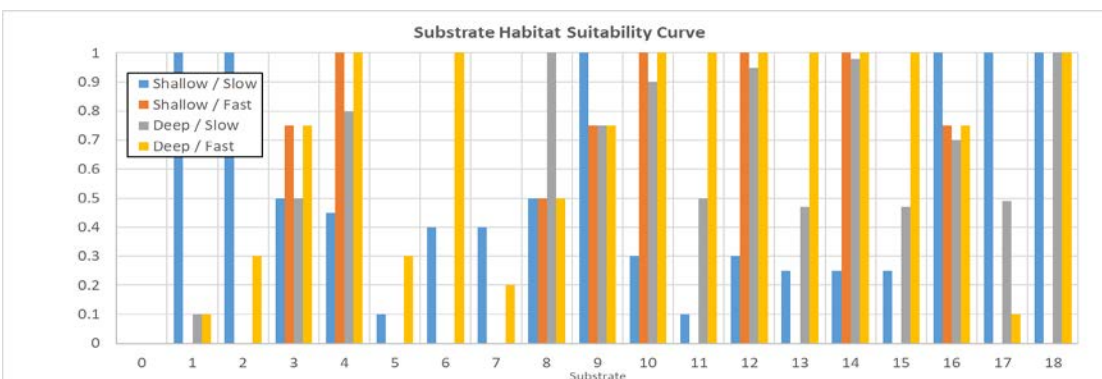
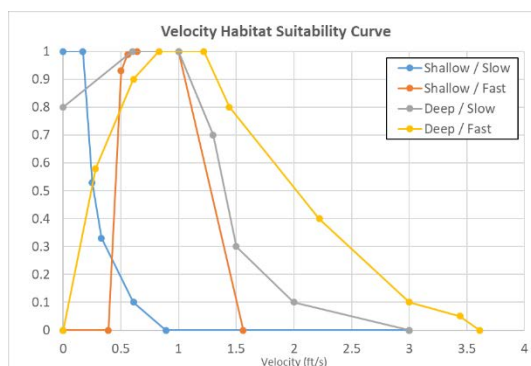
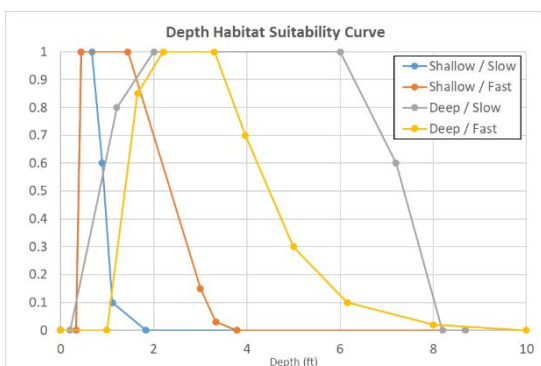


Substrate Coding	
1 No cover and silt or terrestrial vegetation	10 Overhead vegetation and cobble
2 No cover and sand	11 Overhead vegetation and small boulder, boulder, angled bedrock, or woody debris
3 No cover and gravel	12 Instream cover and cobble
4 No cover and cobble	13 Instream cover and small boulder, boulder, angles bedrock, or woody debris
5 No cover and small boulder	14 Proximal instream cover and cobble
6 No cover and boulder, angles bedrock or woody debris	15 Proximal instream cover and small boulder, boulder, angles bedrock, or woody debris
7 No cover and mud or flat bedrock	16 Instream cover or proximal instream cover and gravel
8 Overhead vegetation and terrestrial vegetation	17 Overhead vegetation or instream cover or proximal instream cover and silt or sand
9 Overhead vegetation and gravel	18 Aquatic vegetation - macrophytes

HSCs Source: USFWS "Bluebook" series (1970s,1980s) with habitat values modified by Dr. J. Gore

HABITAT GUILDS (SHALLOW SLOW / SHALLOW FAST / DEEP SLOW / DEEP FAST)

Physical Habitat



Substrate Coding	
1 No cover and silt or terrestrial vegetation	10 Overhead vegetation and cobble
2 No cover and sand	11 Overhead vegetation and small boulder, boulder, angled bedrock, or woody debris
3 No cover and gravel	12 Instream cover and cobble
4 No cover and cobble	13 Instream cover and small boulder, boulder, angles bedrock, or woody debris
5 No cover and small boulder	14 Proximal instream cover and cobble
6 No cover and boulder, angles bedrock or woody debris	15 Proximal instream cover and small boulder, boulder, angles bedrock, or woody debris
7 No cover and mud or flat bedrock	16 Instream cover or proximal instream cover and gravel
8 Overhead vegetation and terrestrial vegetation	17 Overhead vegetation or instream cover or proximal instream cover and silt or sand
9 Overhead vegetation and gravel	18 Aquatic vegetation - macrophytes

HSCs Source: USFWS "Bluebook" series (1970s,1980s) with habitat values modified by Dr. J. Gore

