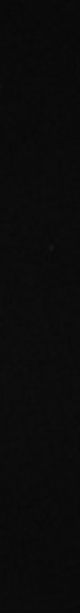
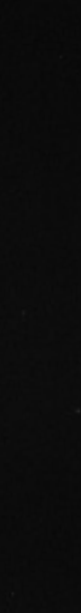
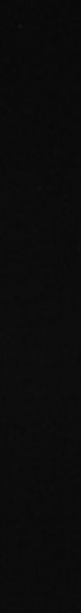
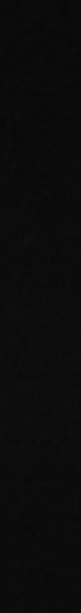
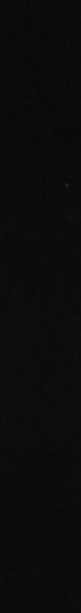
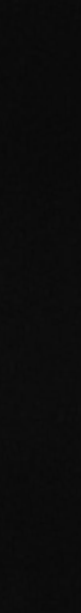
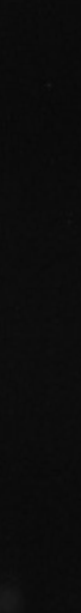
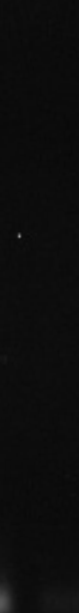
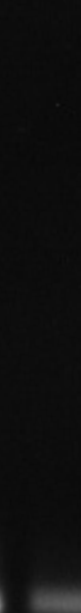
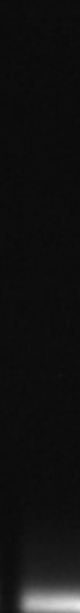
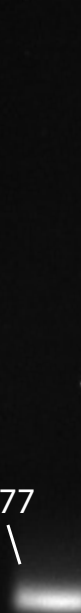
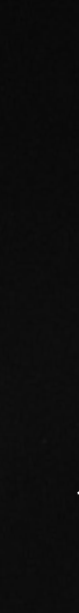
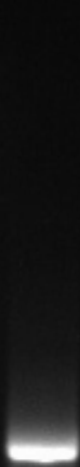


**Figure S7:** Gel pictures for gradients of all 36 tested primer sets. Primer pairs are ordered by size of the targeted region, as in Figure 2. The temperatures 44.3 °C and 44.7 °C were used as positive and negative controls. A 1% agarose gel was used and GeneRuler 1 kb Plus DNA Ladder used in each picture. The expected amplicon size in base pair is annotated on the first visible band of each primer pair.

# 1. Uni-MinibarF1+Uni-MinibarR1

L      pos  
°C =    44.3    44.7    46.0    47.9    50.2    52.8    55.5    58.1    60.5    62.5    63.9    64.5

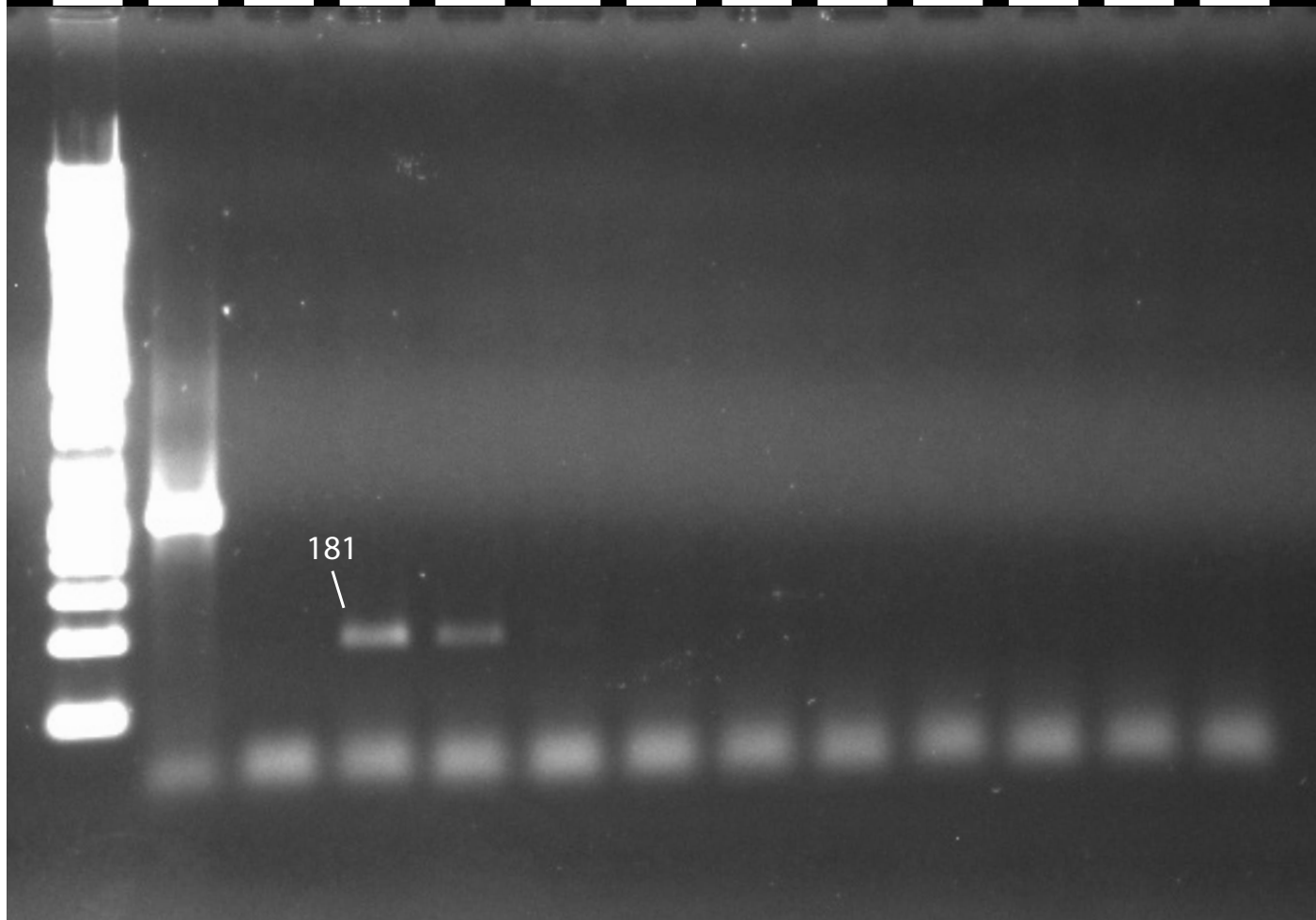


177



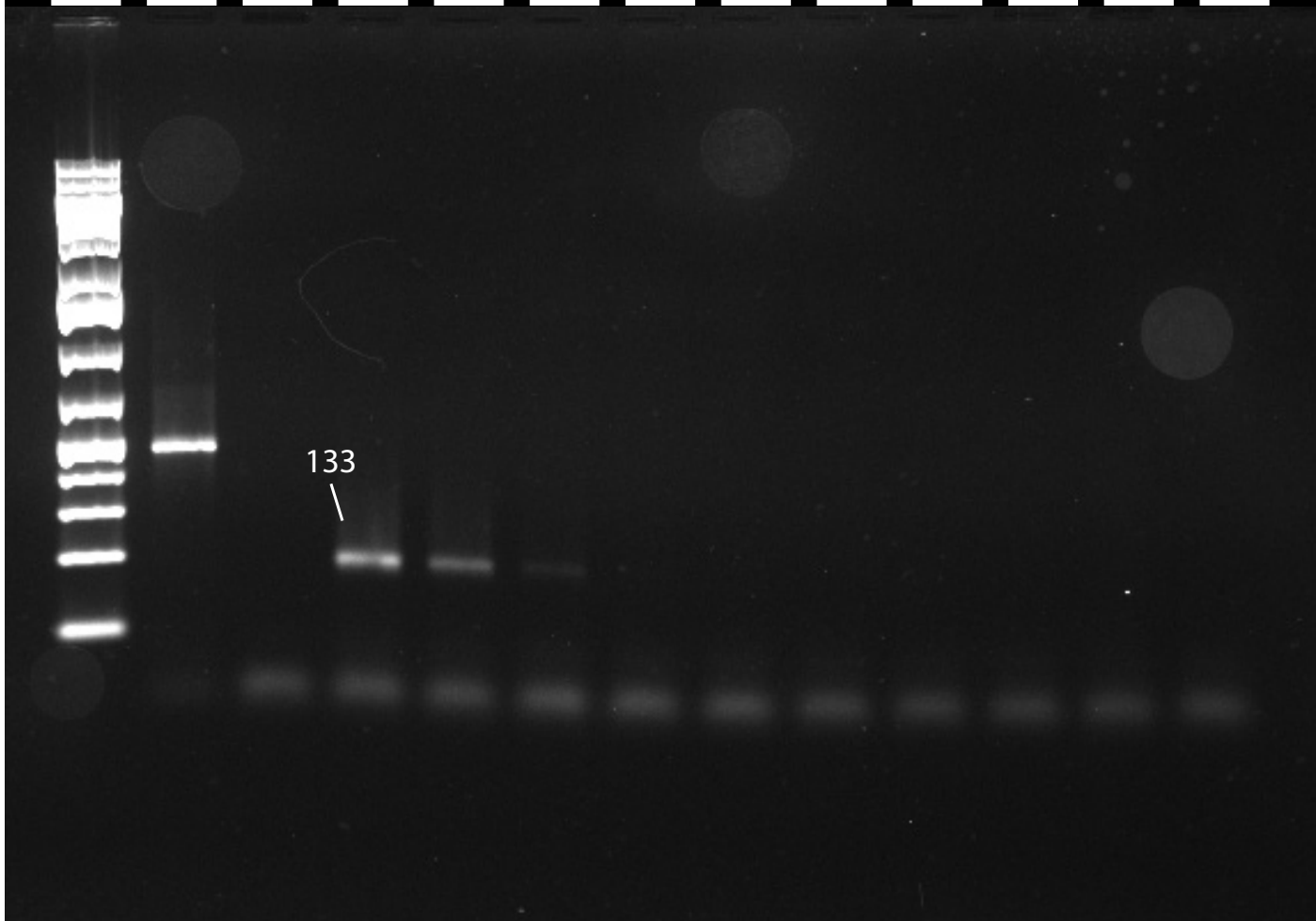
## 2. LepF1+EPT-long-univR

L pos  
°C = 44.3 44.7 46.0 47.9 50.2 52.8 55.5 58.1 60.5 62.5 63.9 64.5



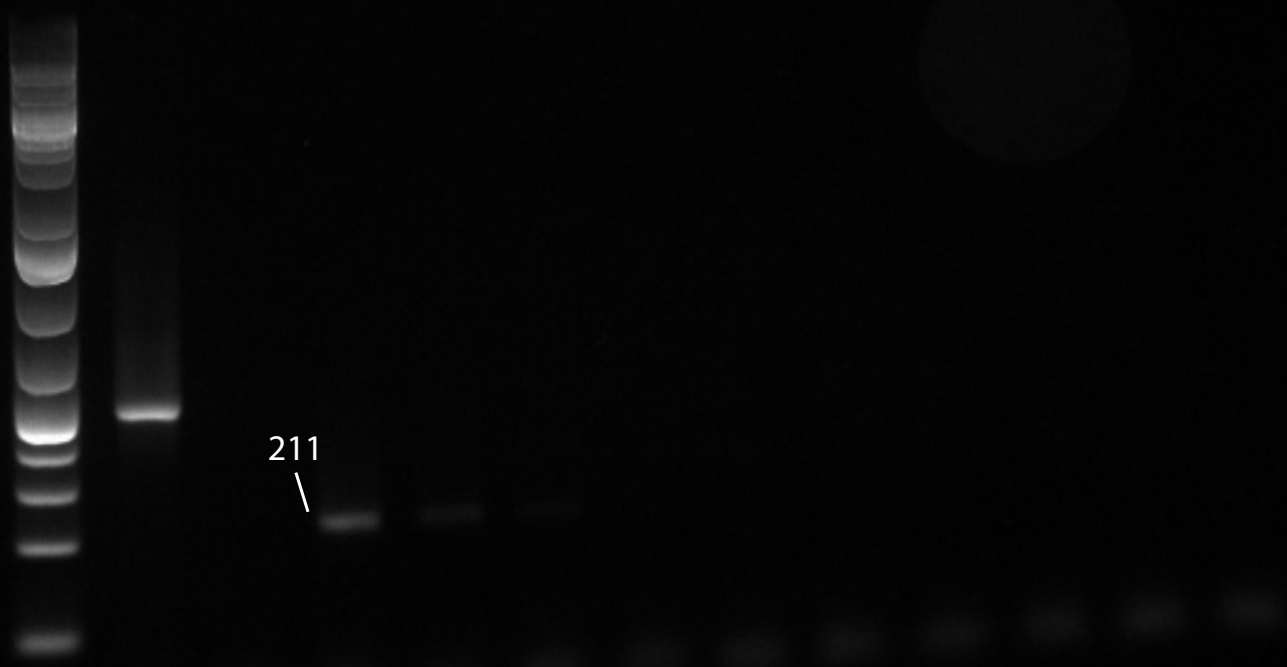
### 3. MG-LCO1490+MG-univR

L pos  
°C = 44.3 44.7 46.0 47.9 50.2 52.8 55.5 58.1 60.5 62.5 63.9 64.5



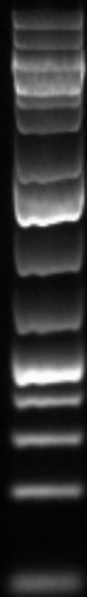
# 4. ZBJ-ArtF1c\_deg+ZBJ-ArtR2c\_deg

L      pos  
°C =    44.3   44.7   46.0   47.9   50.2   52.8   55.5   58.1   60.5   62.5   63.9   64.5

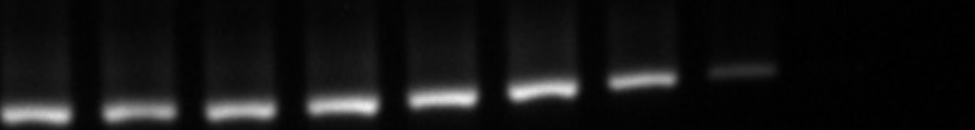


# 5. ZBJ-ArtF1c +ZBJ-ArtR2c

L      pos  
°C =    44.3   44.7   46.0   47.9   50.2   52.8   55.5   58.1   60.5   62.5   63.9   64.5

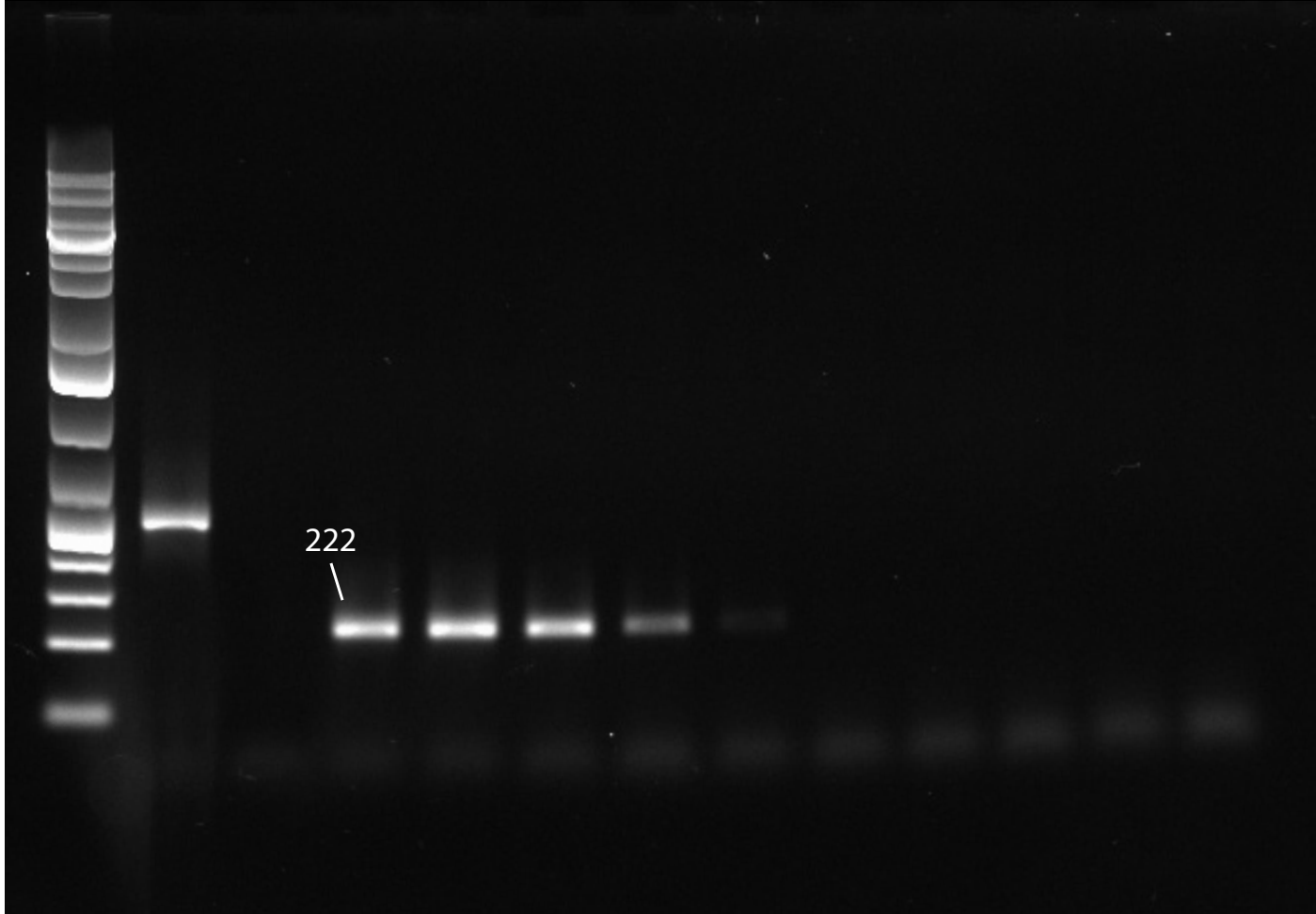


211  
|



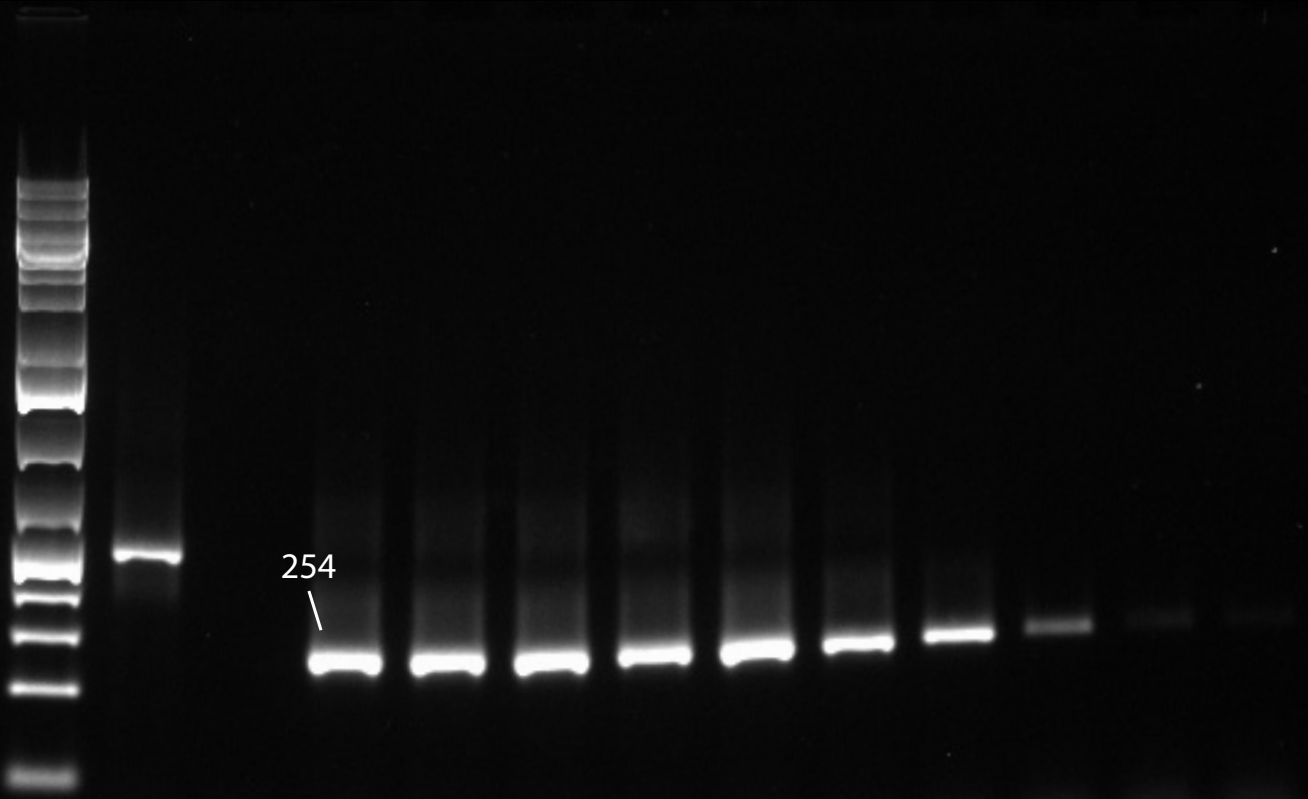
# 6. fwhF1+fwhR1

L      pos  
°C =    44.3    44.7    46.0    47.9    50.2    52.8    55.5    58.1    60.5    62.5    63.9    64.5



# 7. fwhF2+fwhR2n

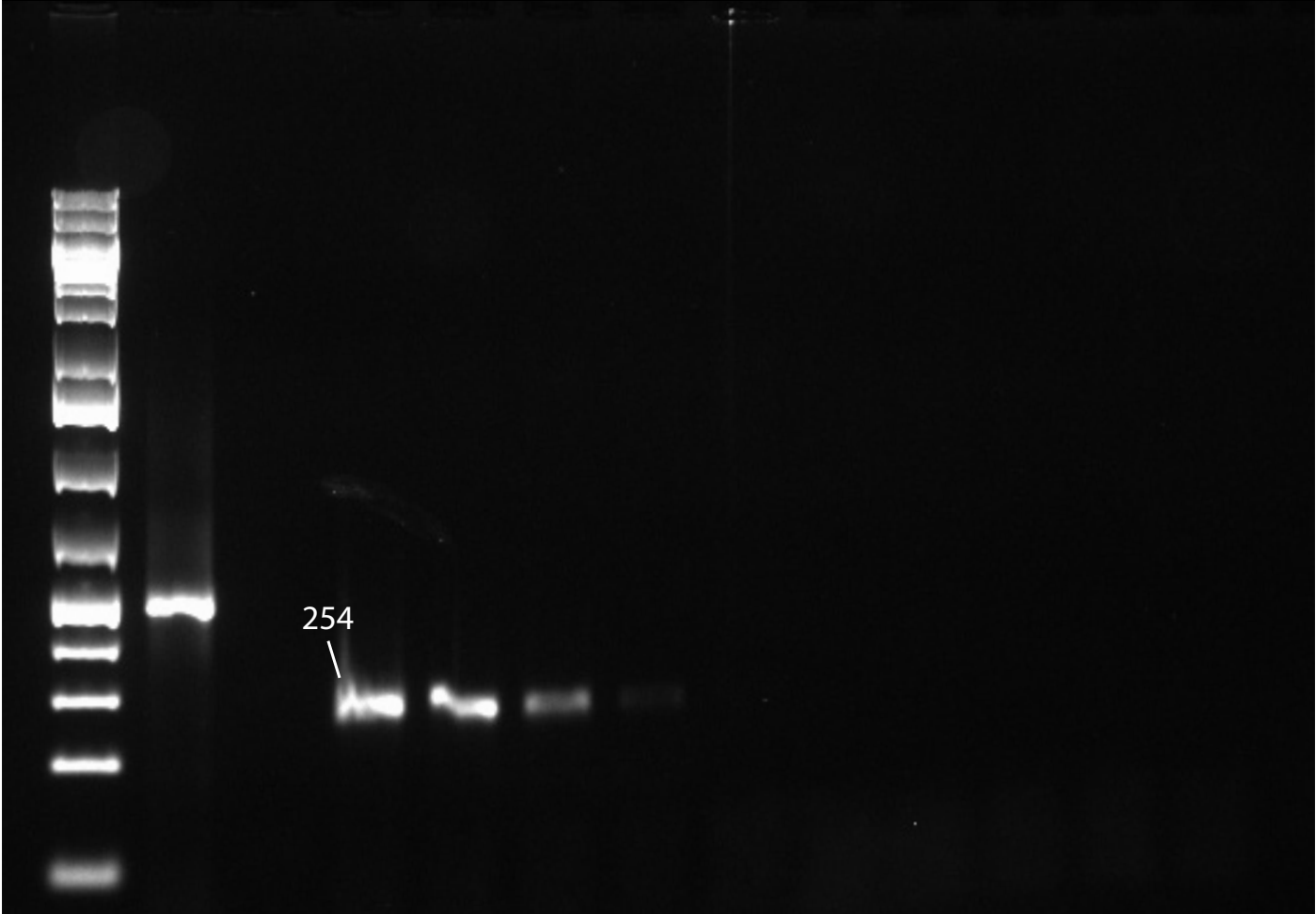
L      pos  
°C =    44.3   44.7   46.0   47.9   50.2   52.8   55.5   58.1   60.5   62.5   63.9   64.5





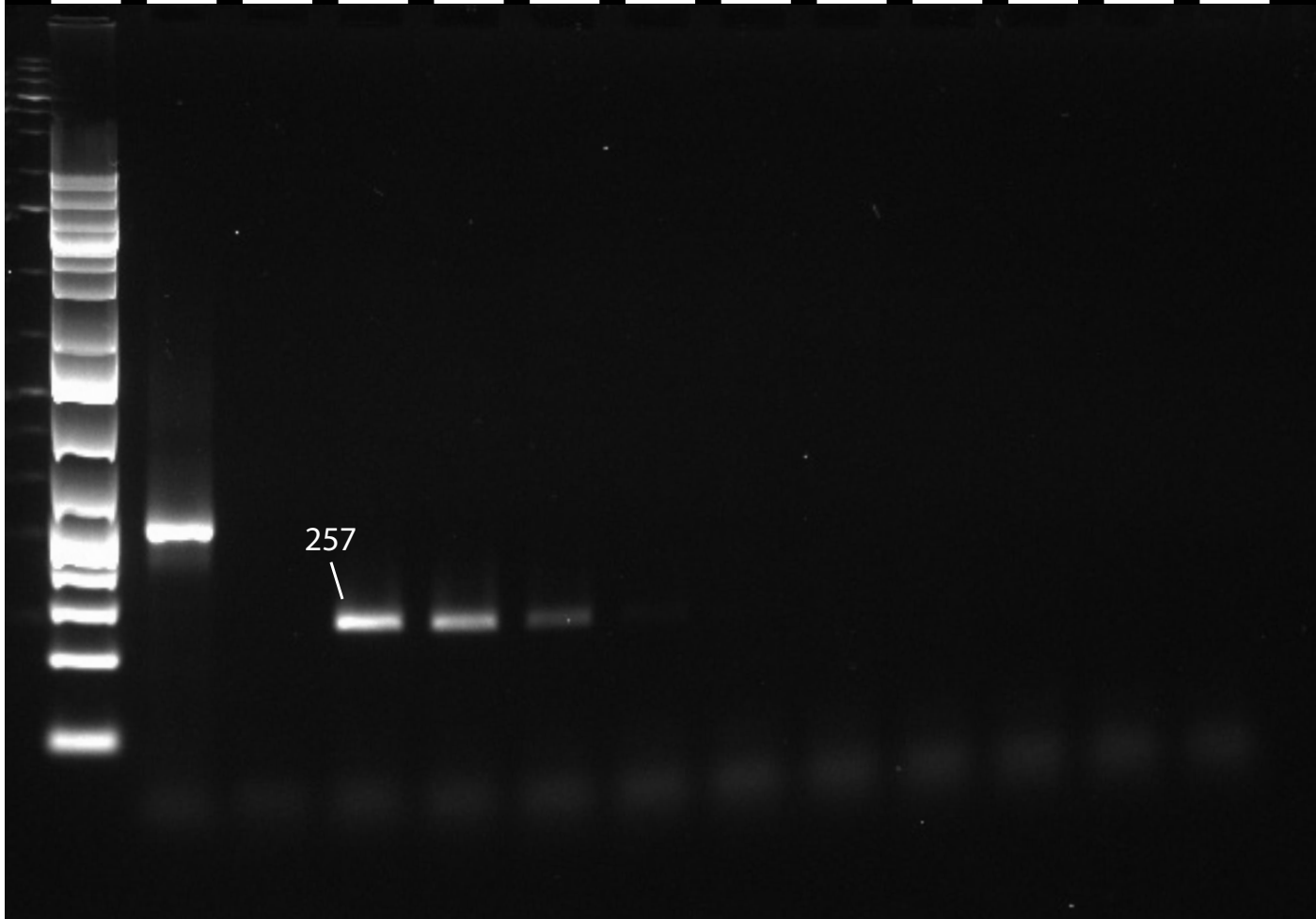
# 8. A+D

L pos  
°C = 44.3 44.7 46.0 47.9 50.2 52.8 55.5 58.1 60.5 62.5 63.9 64.5



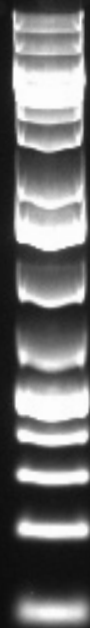
# 9. BF1i+BR1i

L pos  
°C = 44.3 44.7 46.0 47.9 50.2 52.8 55.5 58.1 60.5 62.5 63.9 64.5



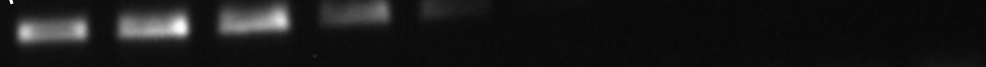
# 10. BF1+BR1

L pos  
°C = 44.3 44.7 46.0 47.9 50.2 52.8 55.5 58.1 60.5 62.5 63.9 64.5



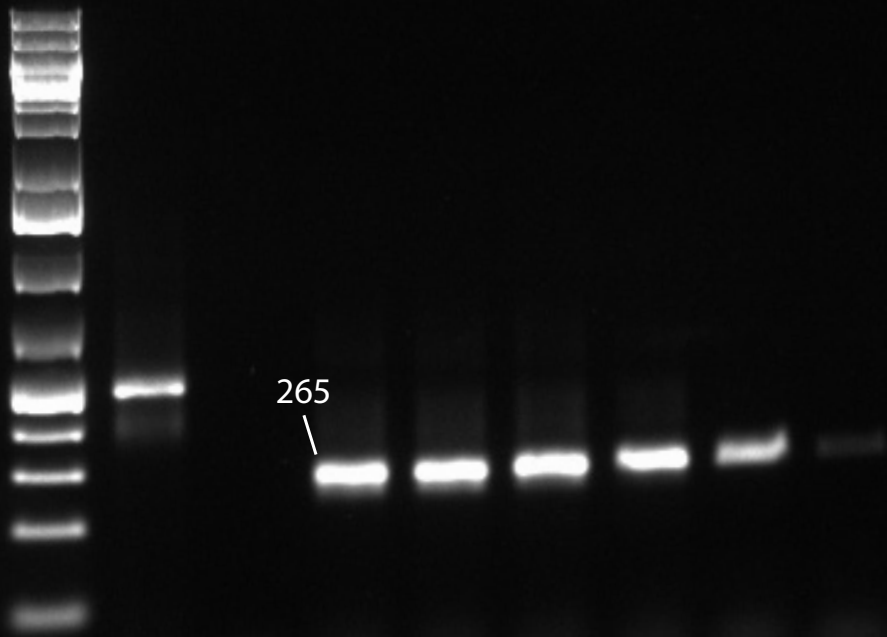
pos

257  
└─┘



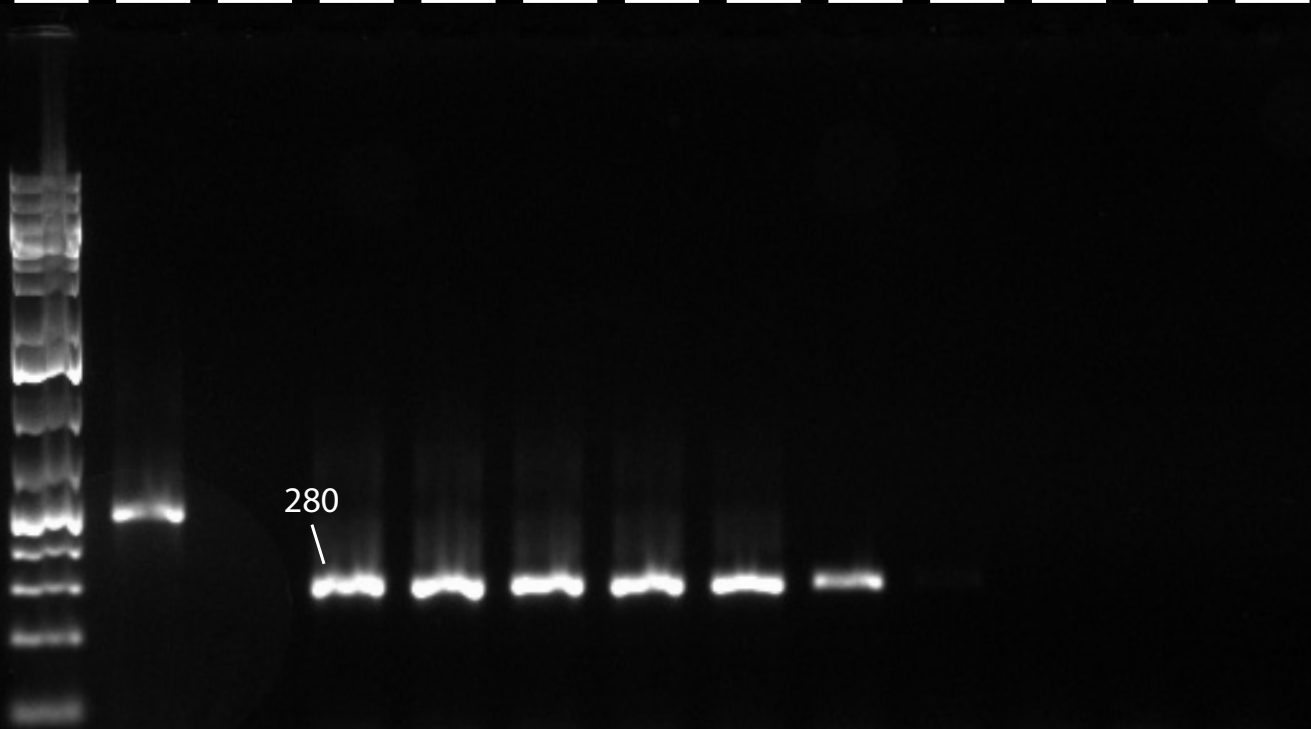
# 11. LepF1+MLepF1-Rev

L pos  
°C = 44.3 44.7 46.0 47.9 50.2 52.8 55.5 58.1 60.5 62.5 63.9 64.5



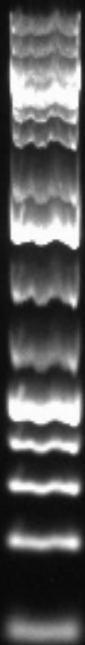
# 12. LCO1490+230\_R

L pos  
°C = 44.3 44.7 46.0 47.9 50.2 52.8 55.5 58.1 60.5 62.5 63.9 64.5



# 13. C+F

L pos  
°C = 44.3 44.7 46.0 47.9 50.2 52.8 55.5 58.1 60.5 62.5 63.9 64.5



pos

298



46.0

47.9

50.2

52.8

55.5

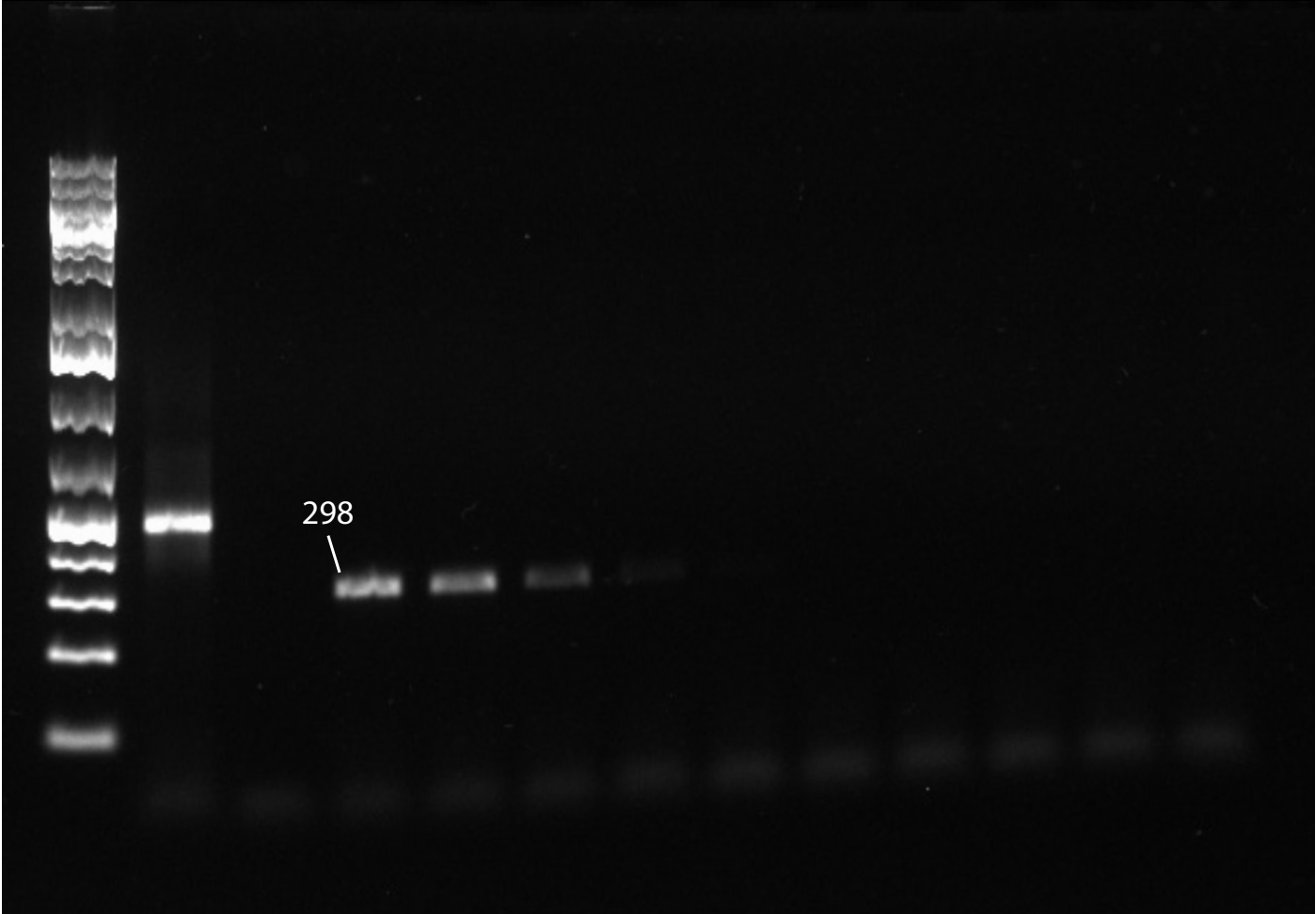
58.1

60.5

62.5

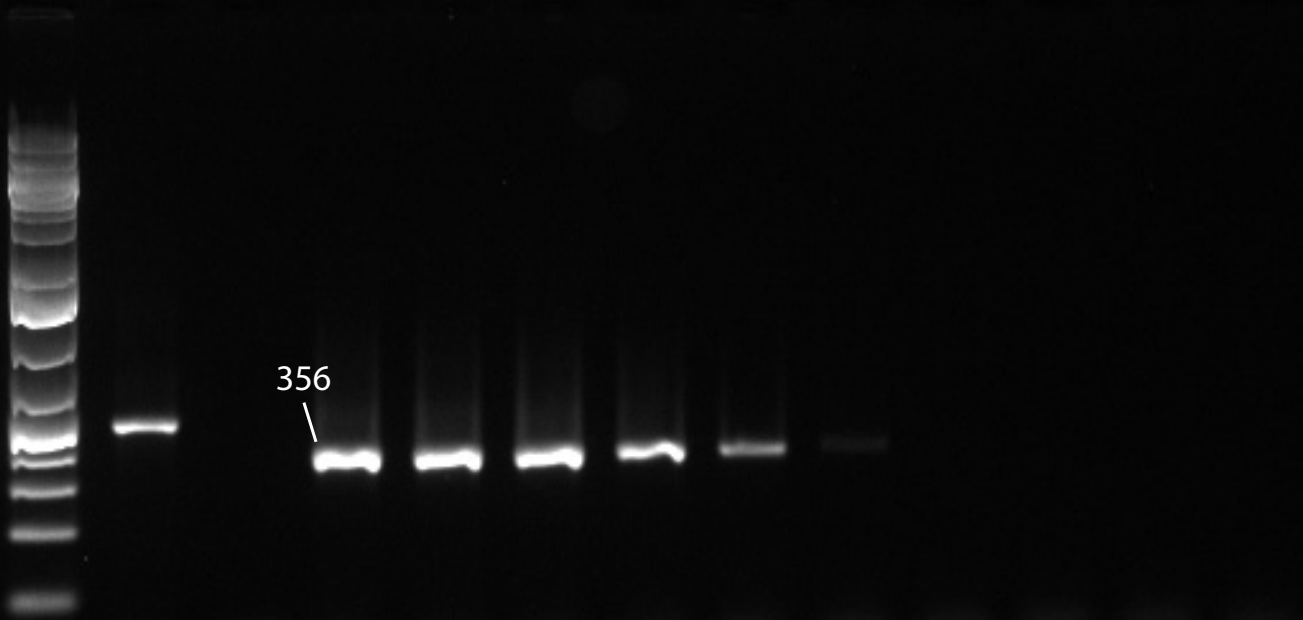
63.9

64.5



# 14. ArF5+ArR5

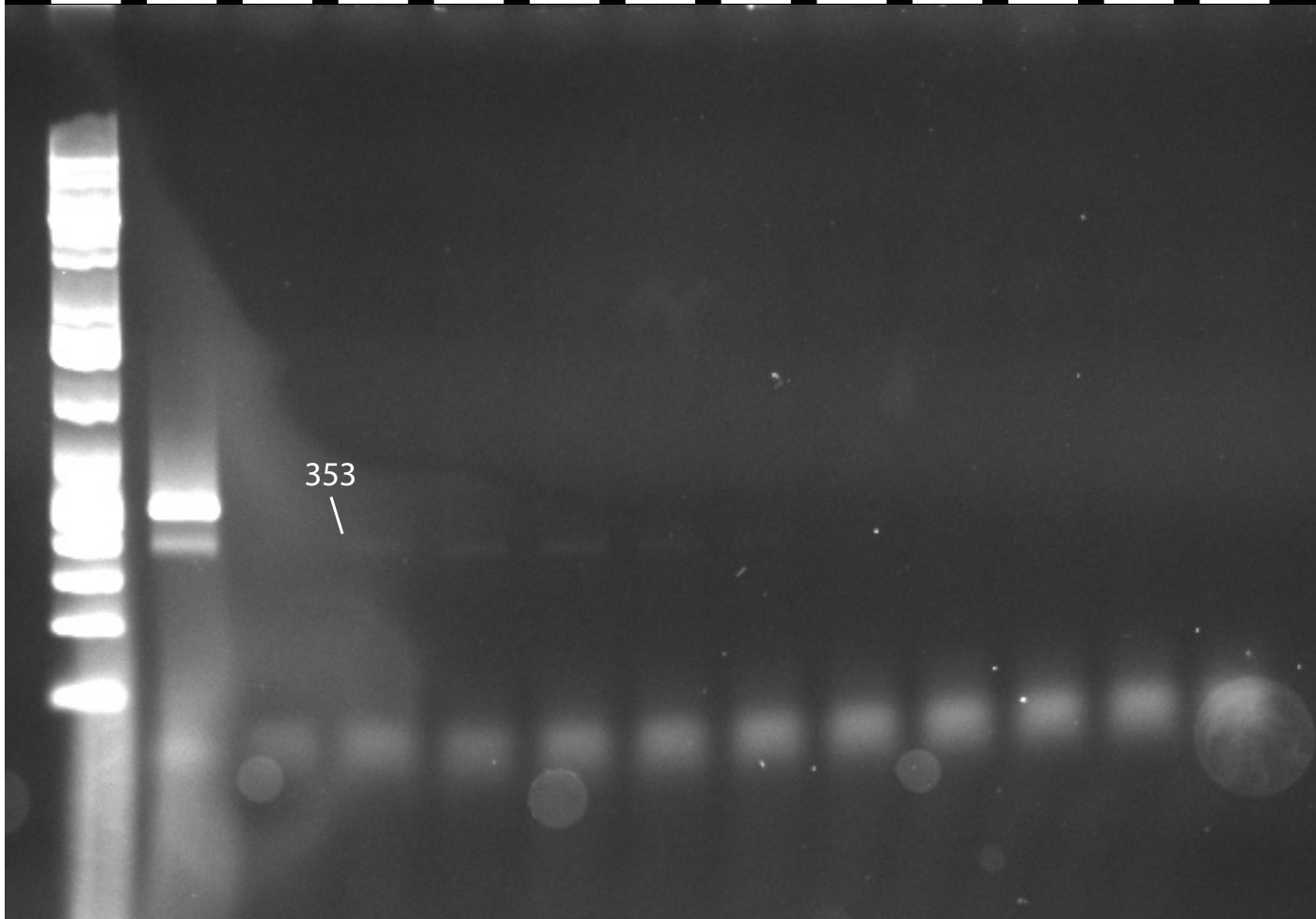
L pos  
°C = 44.3 44.7 46.0 47.9 50.2 52.8 55.5 58.1 60.5 62.5 63.9 64.5



# 15. Bn+En

L pos  
°C = 44.3 44.7 46.0 47.9 50.2 52.8 55.5 58.1 60.5 62.5 63.9 64.5

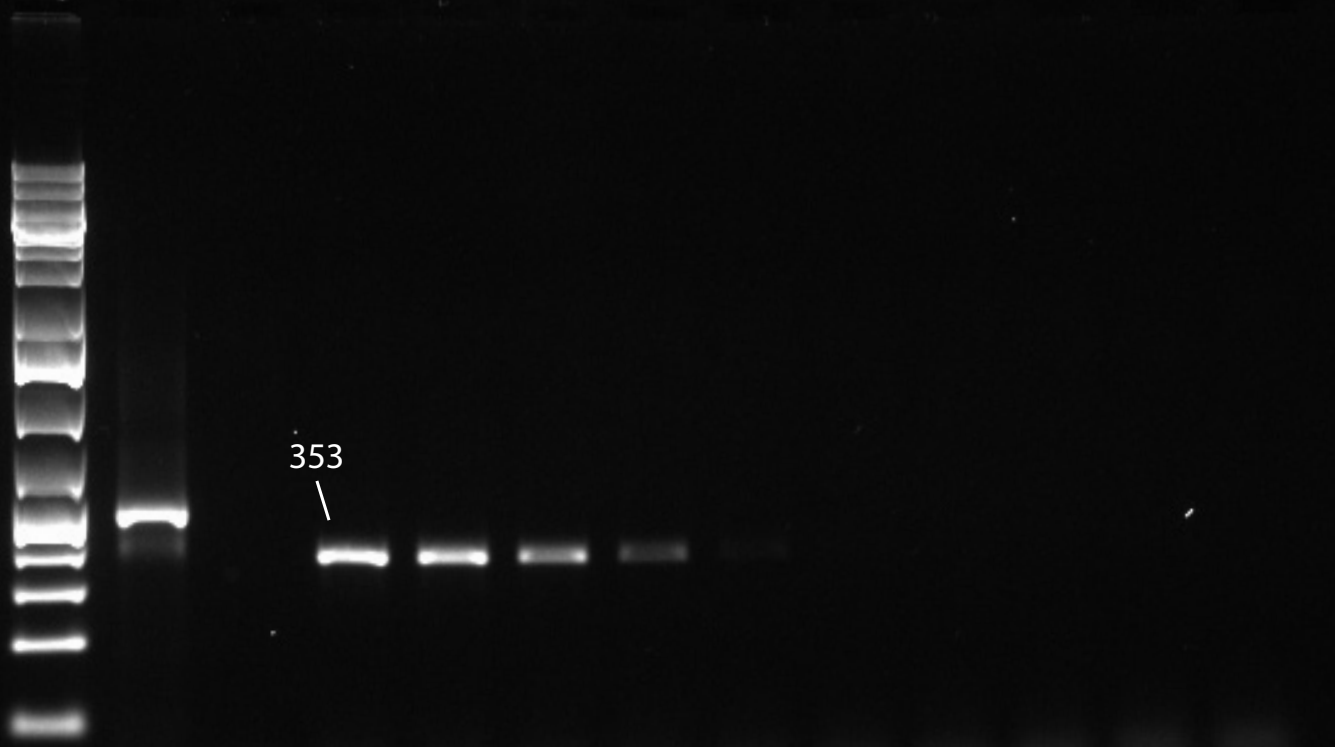
353





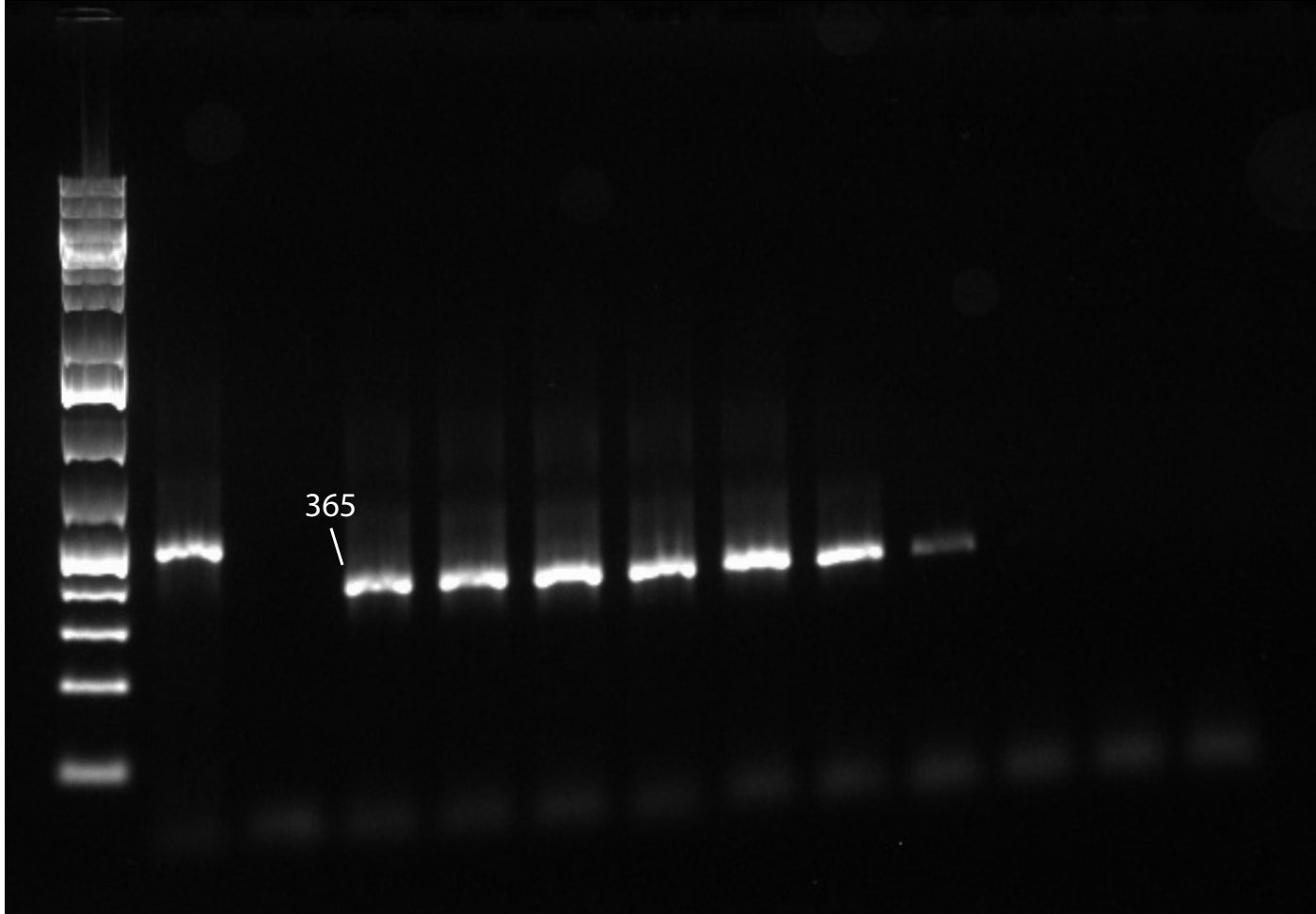
# 16. B+E

L      pos  
°C =    44.3    44.7    46.0    47.9    50.2    52.8    55.5    58.1    60.5    62.5    63.9    64.5



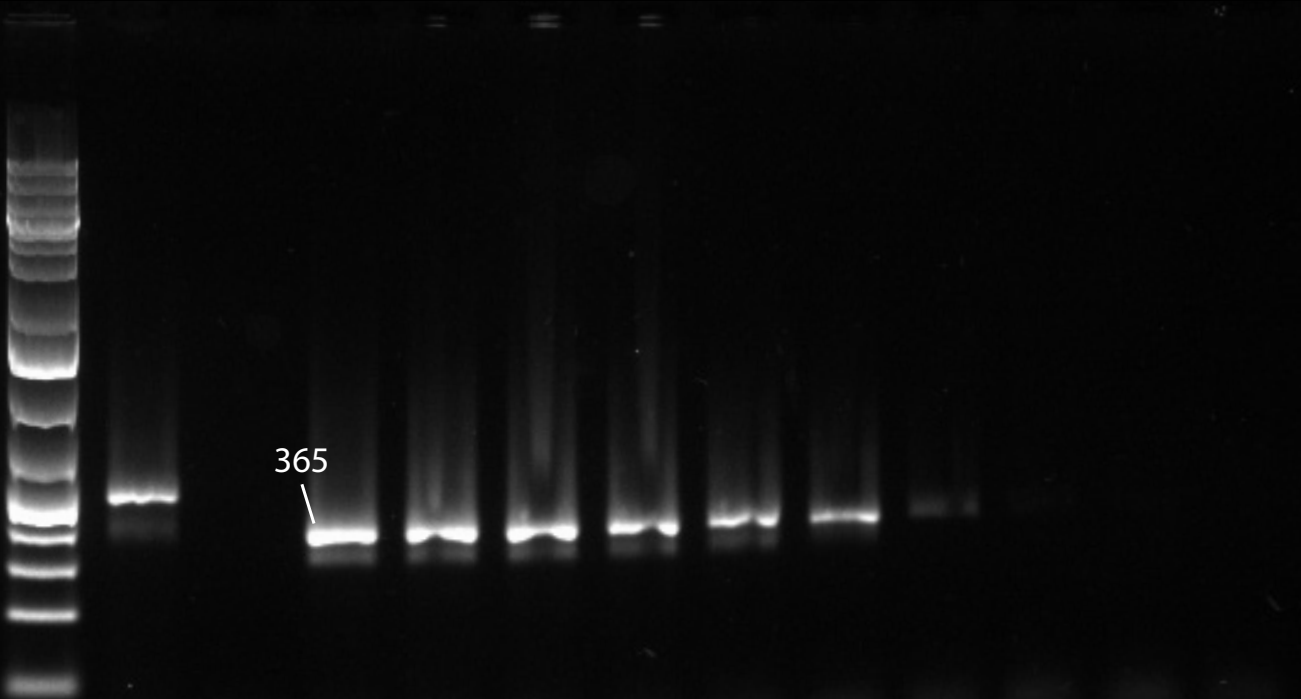
# 17. mlCOLintF-XT+jgHCO2198

L pos  
°C = 44.3 44.7 46.0 47.9 50.2 52.8 55.5 58.1 60.5 62.5 63.9 64.5



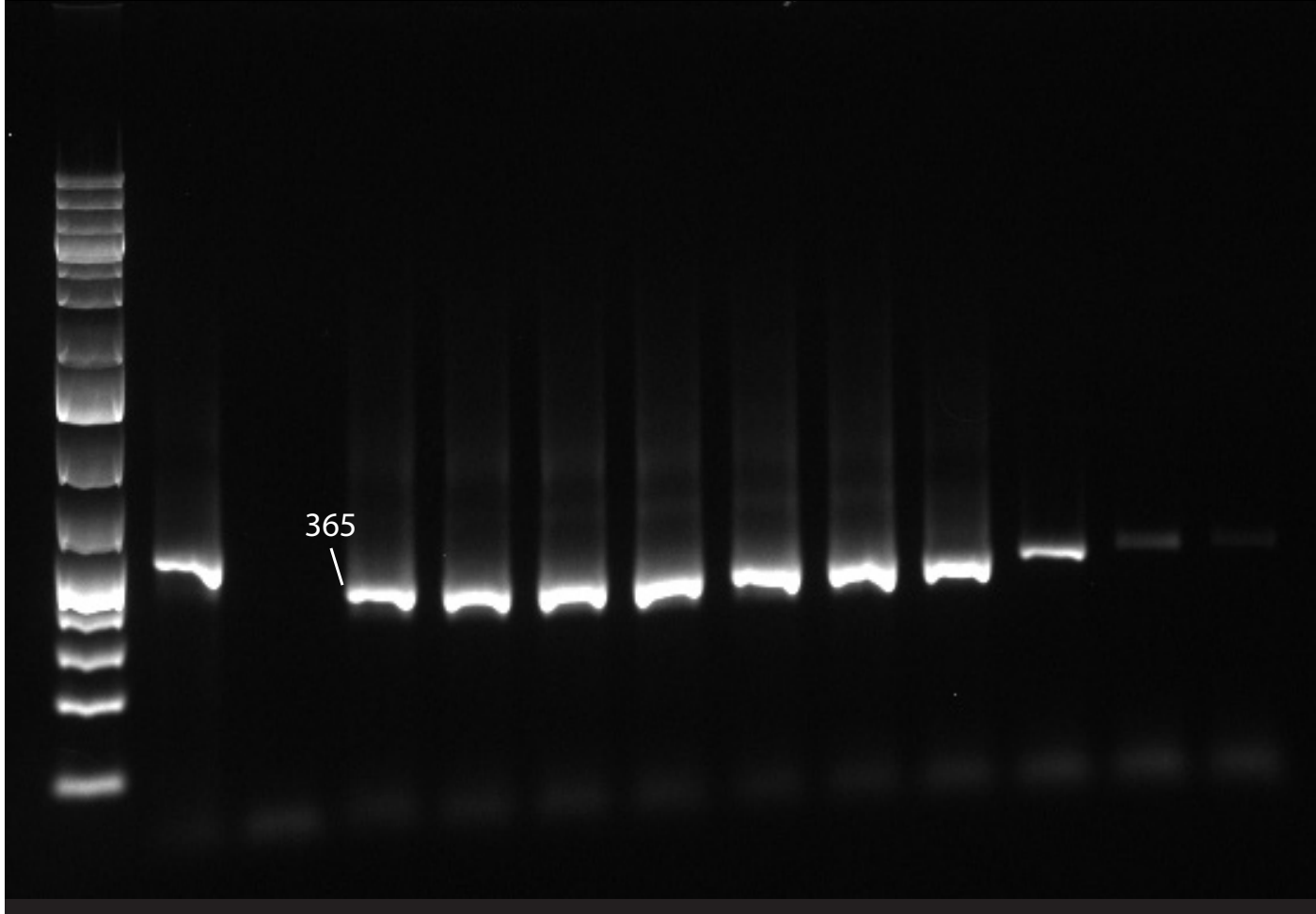
# 18. mlCOlintF+Fol-degen-rev

L pos  
°C = 44.3 44.7 46.0 47.9 50.2 52.8 55.5 58.1 60.5 62.5 63.9 64.5



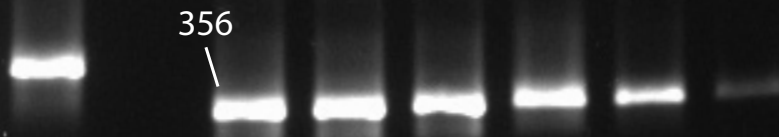
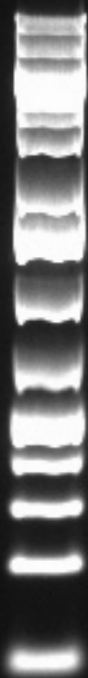
# 19. mlCOLintF+jgHCO2198

L pos  
°C = 44.3 44.7 46.0 47.9 50.2 52.8 55.5 58.1 60.5 62.5 63.9 64.5



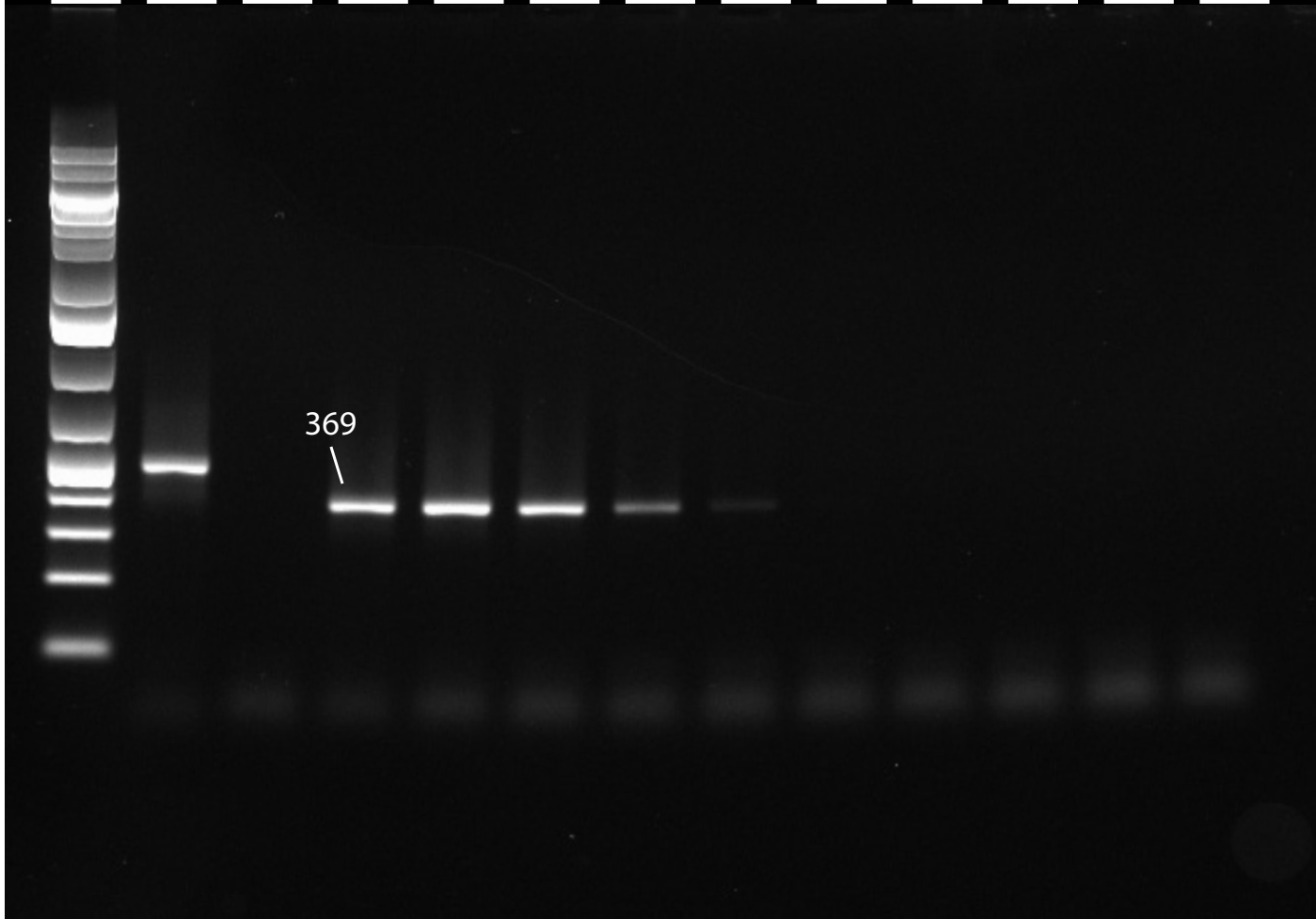
# 20. BF1+BR2

L pos  
°C = 44.3 44.7 46.0 47.9 50.2 52.8 55.5 58.1 60.5 62.5 63.9 64.5



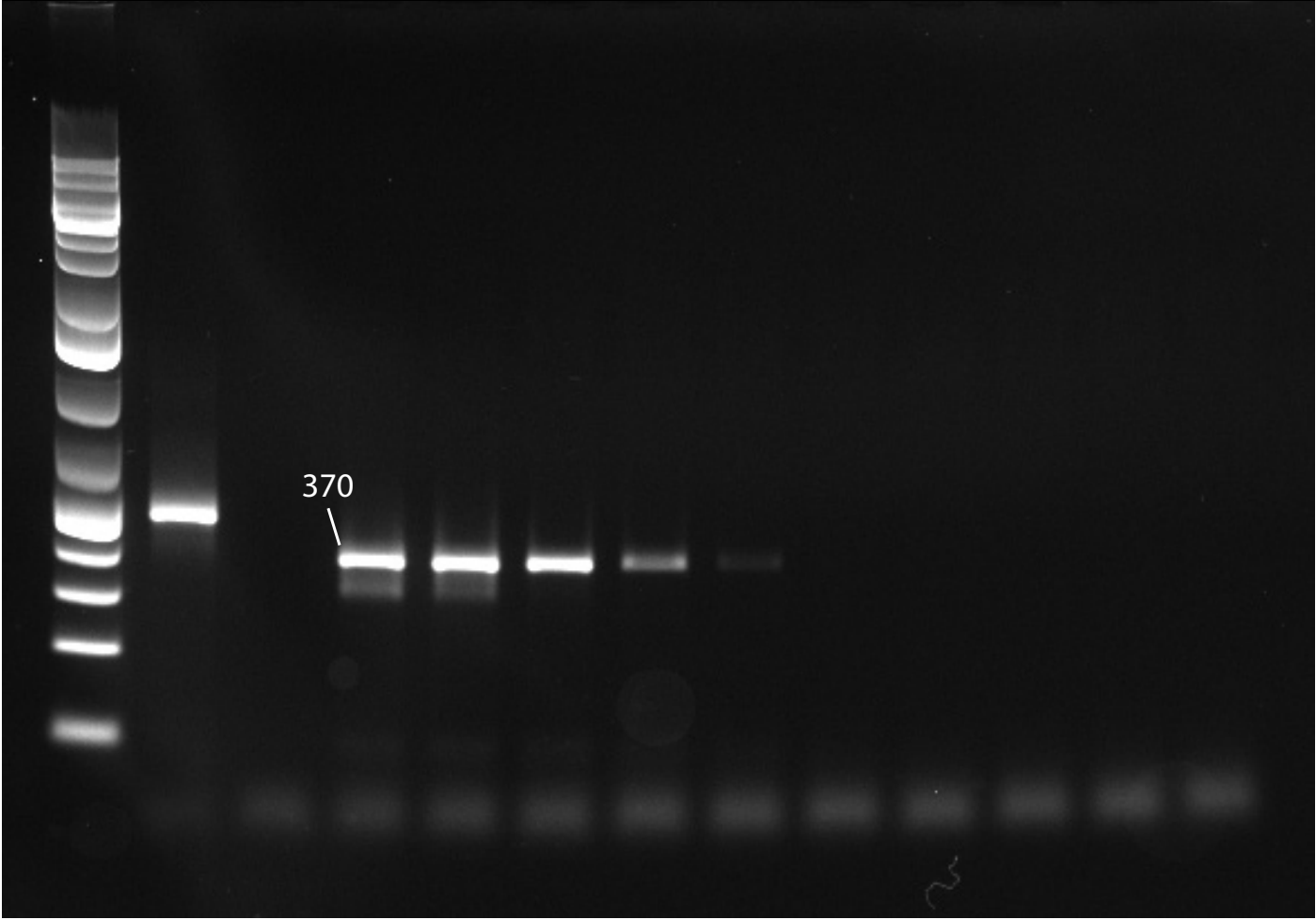
# 21. fwhF1+BR3

L pos  
°C = 44.3 44.7 46.0 47.9 50.2 52.8 55.5 58.1 60.5 62.5 63.9 64.5



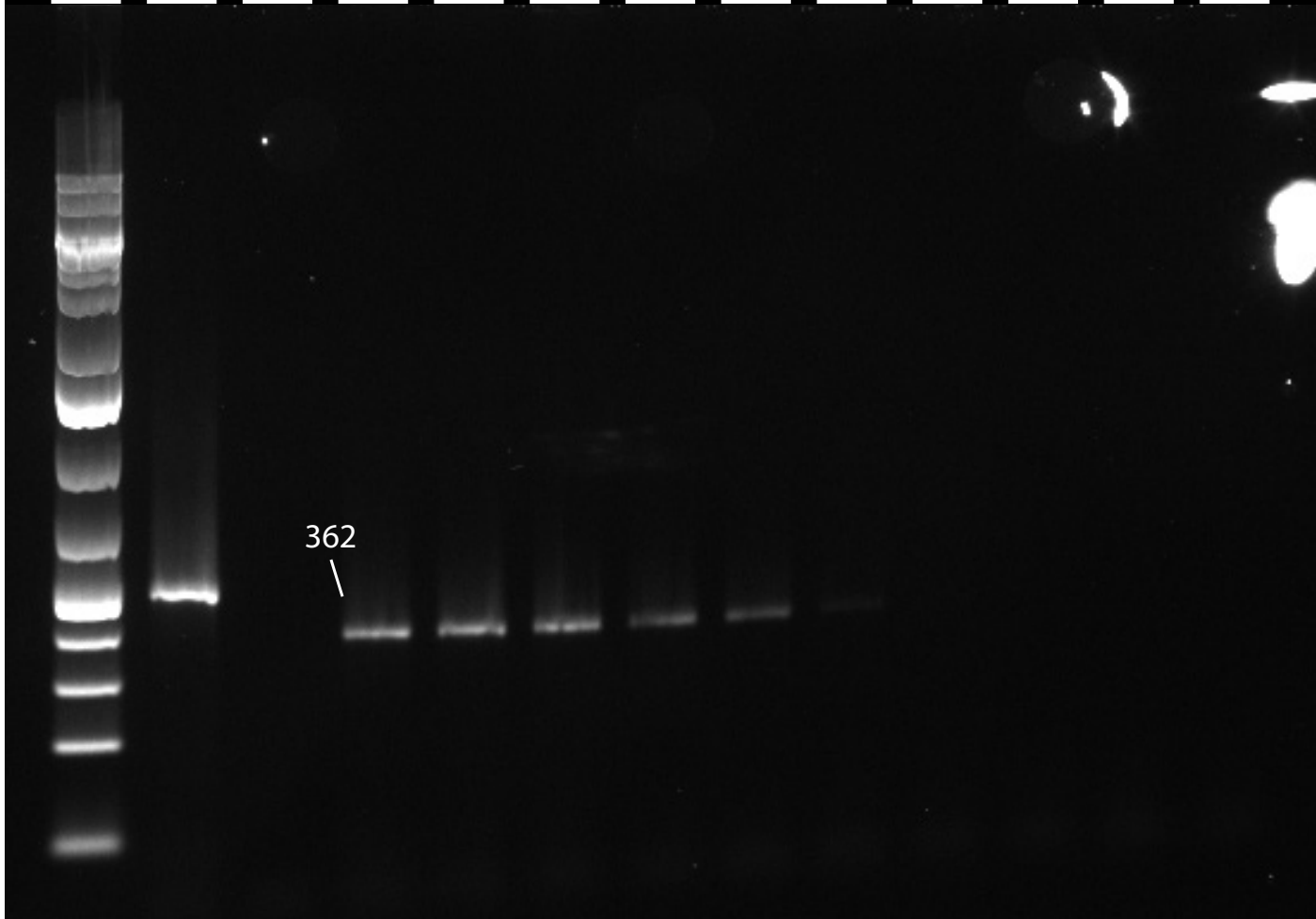
# 22. jgLCO1490+mICOlntR

L  
°C =    pos    44.3    44.7    46.0    47.9    50.2    52.8    55.5    58.1    60.5    62.5    63.9    64.5



# 23. BF2+BR1

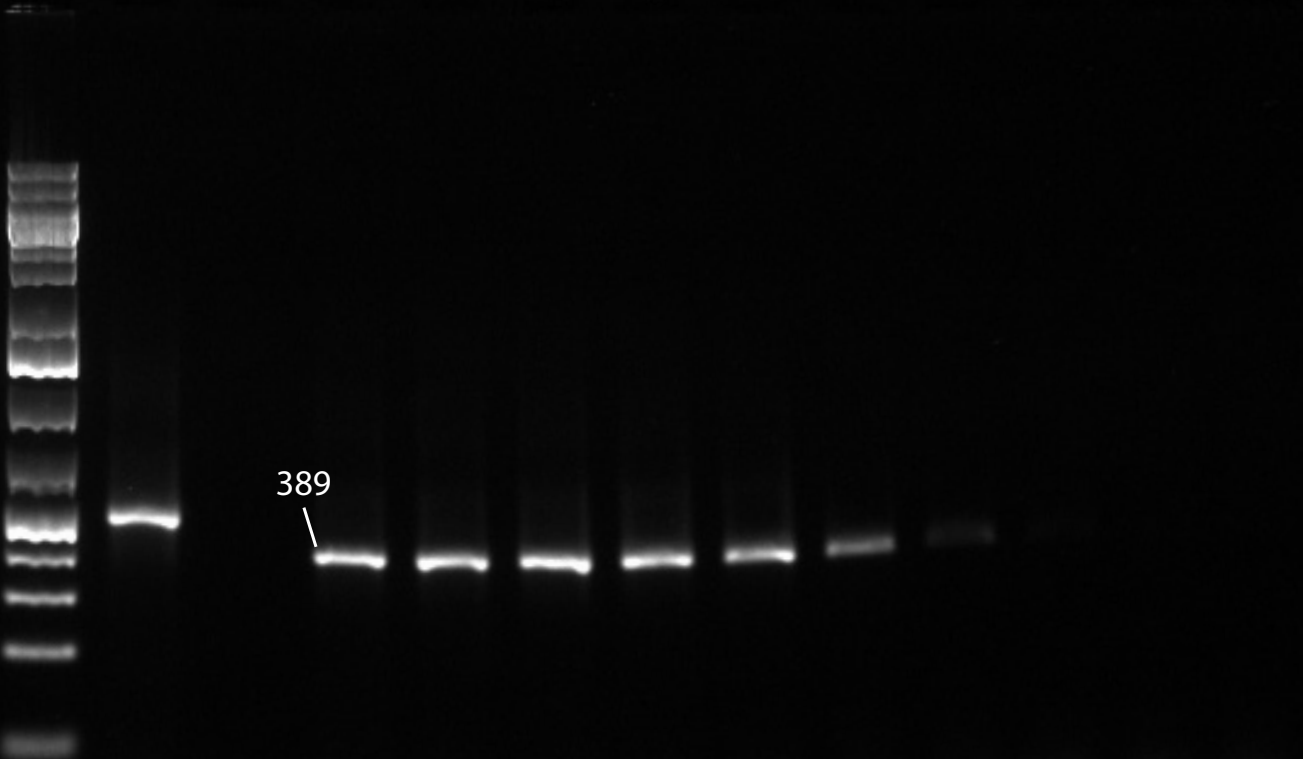
L pos  
°C = 44.3 44.7 46.0 47.9 50.2 52.8 55.5 58.1 60.5 62.5 63.9 64.5





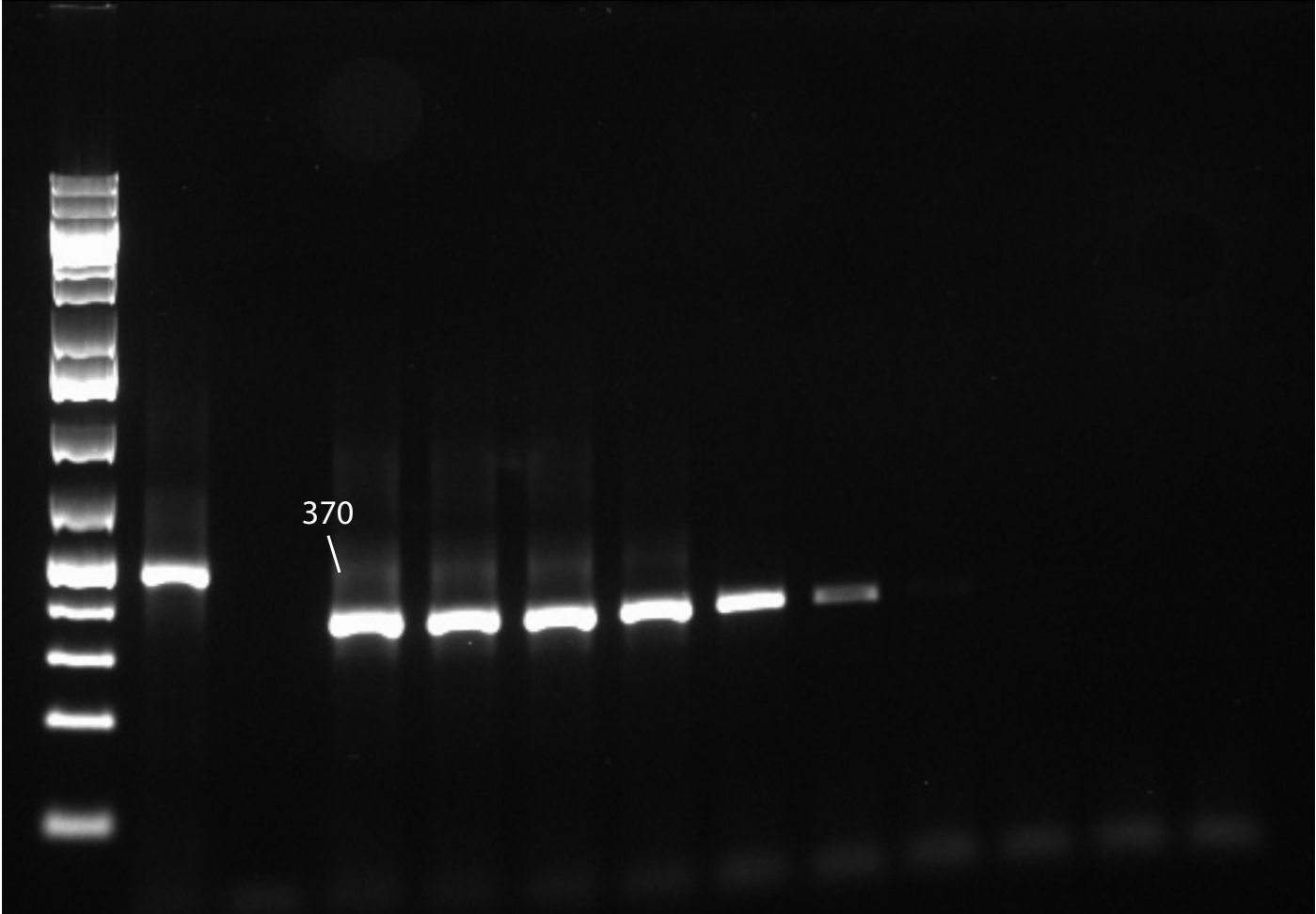
# 24. MZplankF2+C\_LepFolR

L pos  
°C = 44.3 44.7 46.0 47.9 50.2 52.8 55.5 58.1 60.5 62.5 63.9 64.5



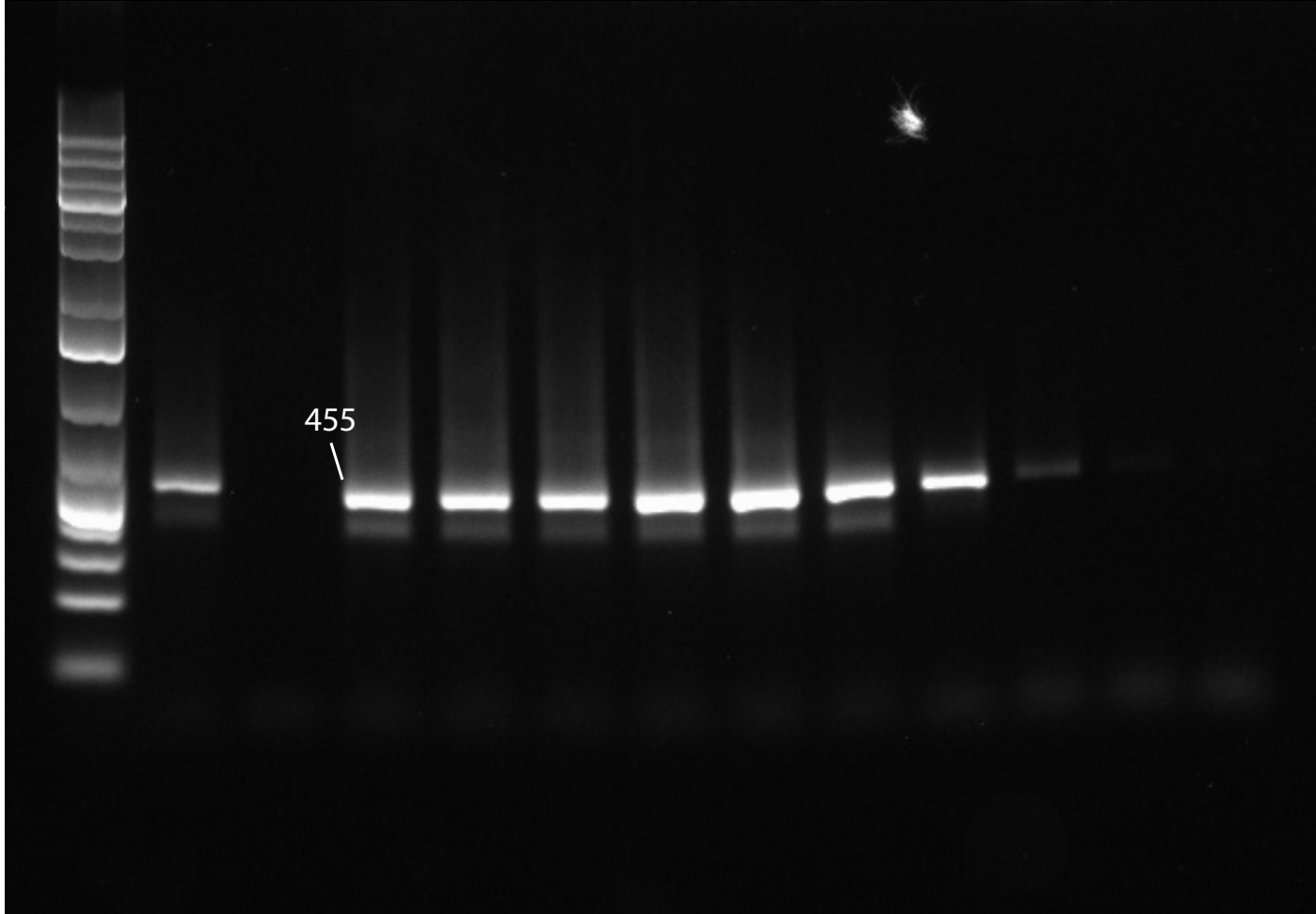
# 25. LCO1490+III\_C\_R

L pos  
°C = 44.3 44.7 46.0 47.9 50.2 52.8 55.5 58.1 60.5 62.5 63.9 64.5



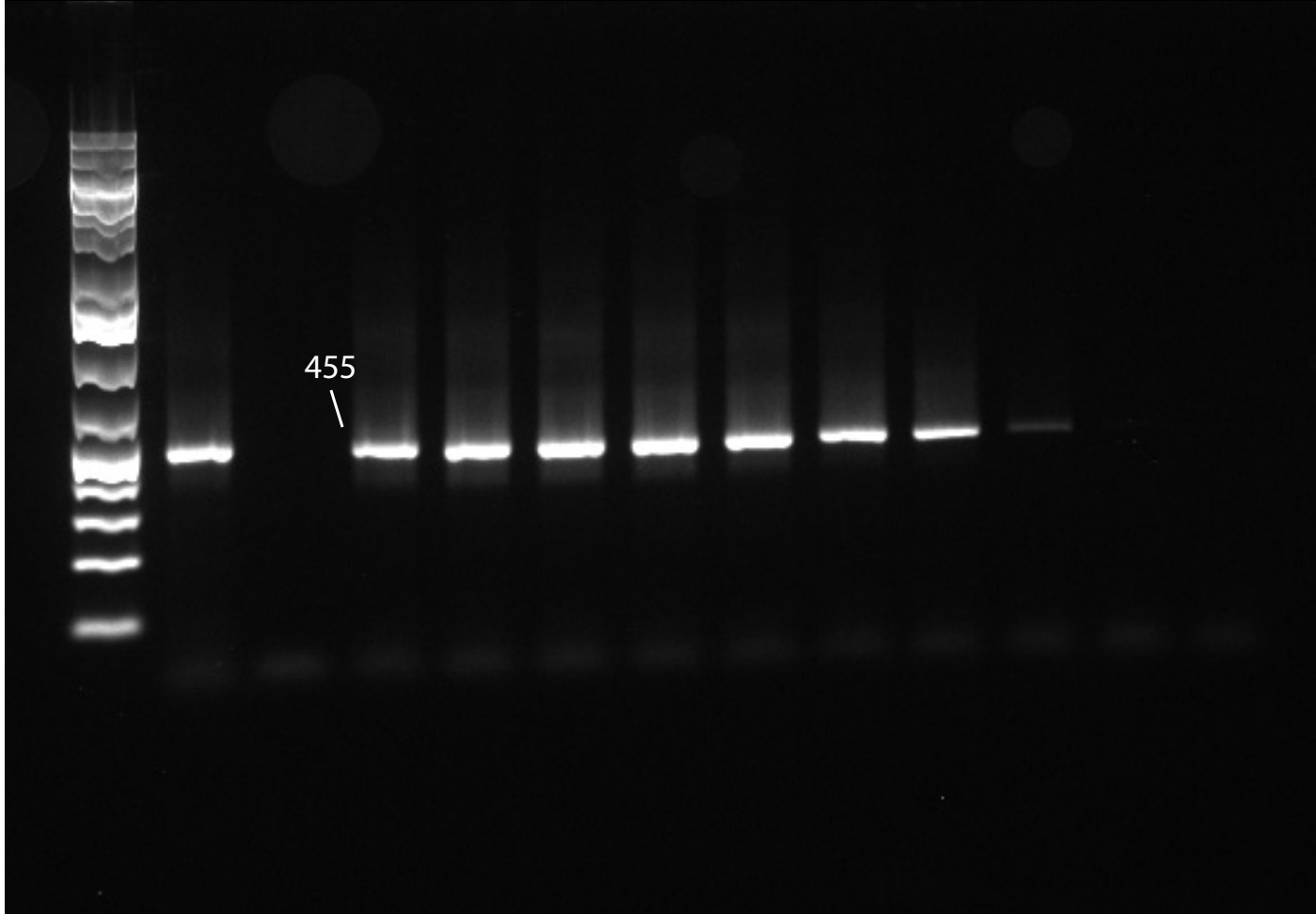
# 26. MhemF+dgHCO2198

L pos  
°C = 44.3 44.7 46.0 47.9 50.2 52.8 55.5 58.1 60.5 62.5 63.9 64.5



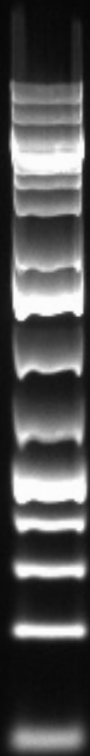
# 27. MLepF1+C\_LepFolR

L pos  
°C = 44.3 44.7 46.0 47.9 50.2 52.8 55.5 58.1 60.5 62.5 63.9 64.5

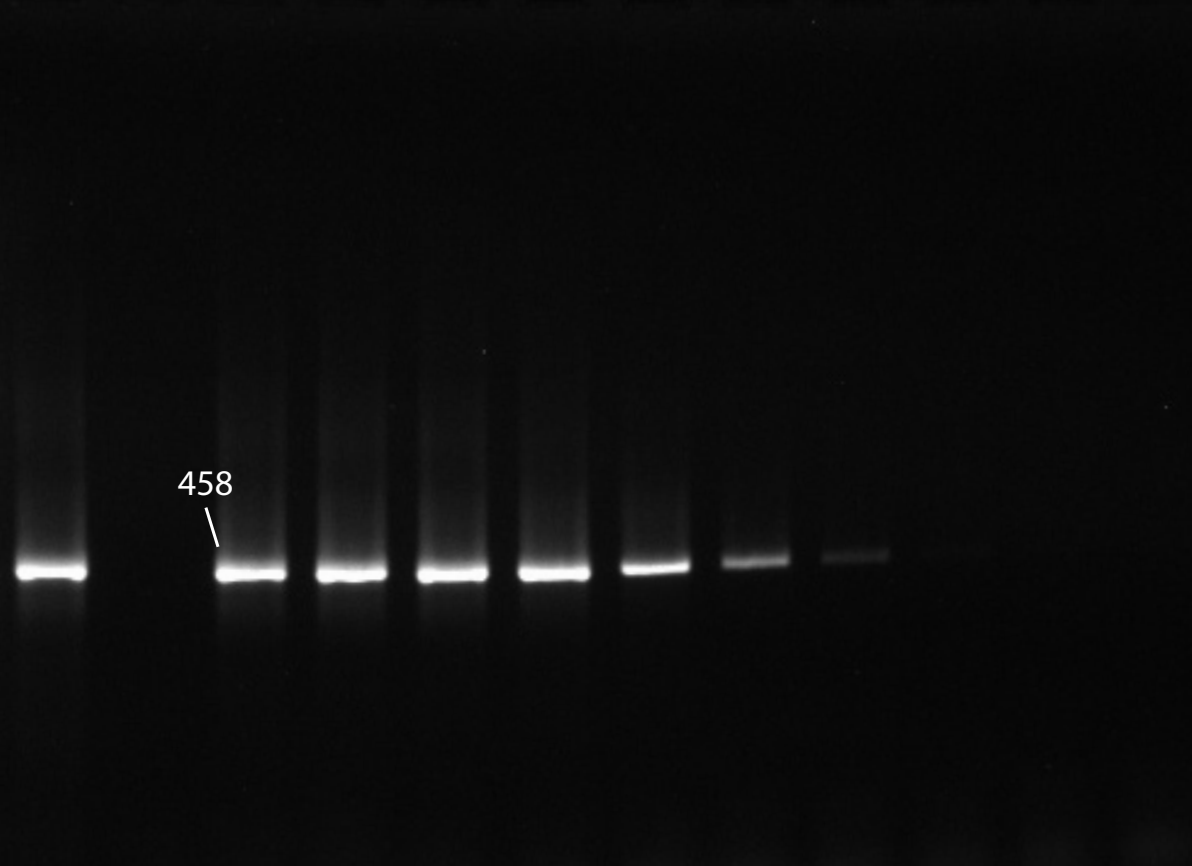


# 28. BF3+BR2

L pos  
°C = 44.3 44.7 46.0 47.9 50.2 52.8 55.5 58.1 60.5 62.5 63.9 64.5

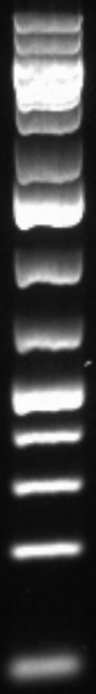


458



# 29. III\_B\_F+HCO2198

L pos  
°C = 44.3 44.7 46.0 47.9 50.2 52.8 55.5 58.1 60.5 62.5 63.9 64.5



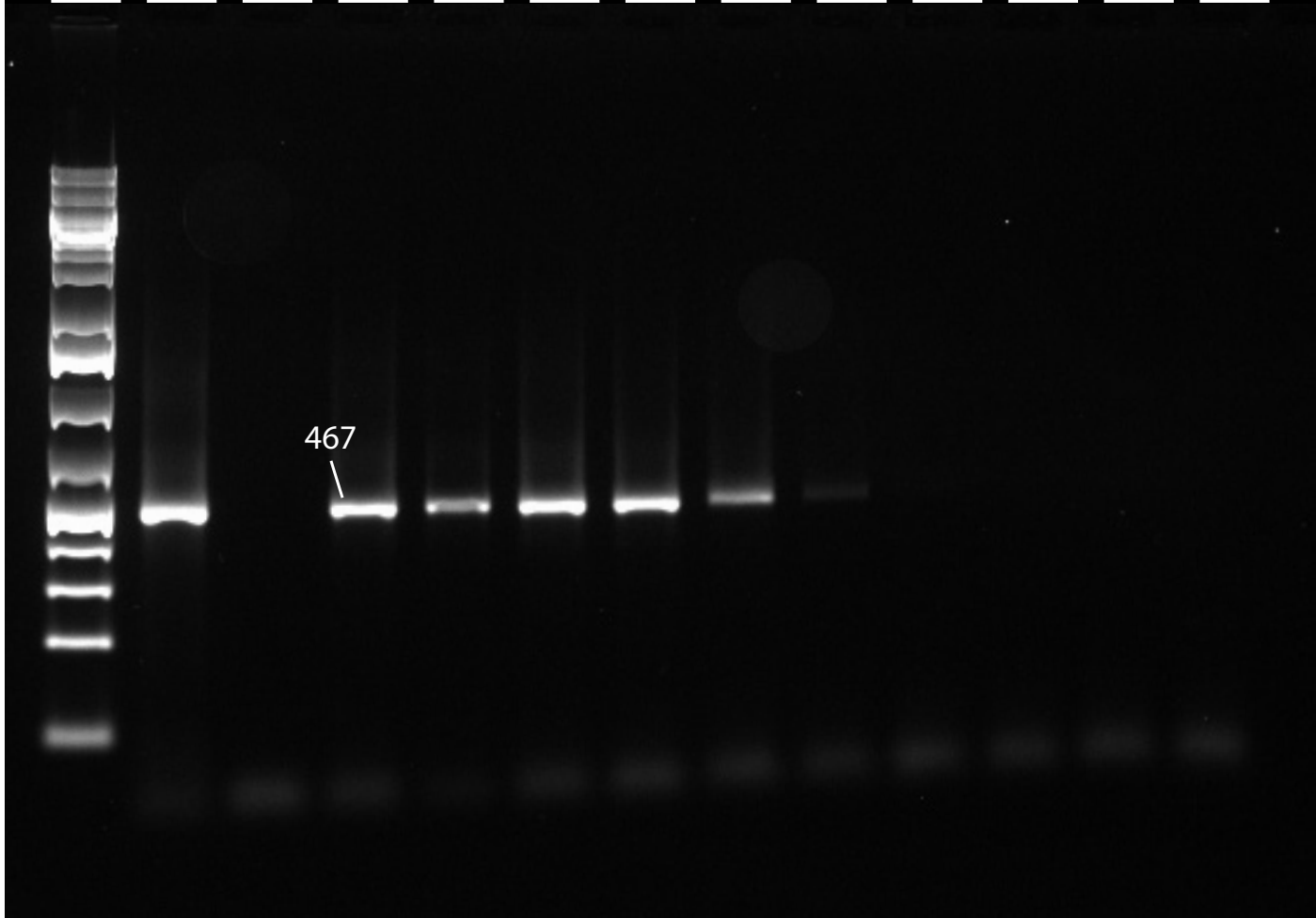
464



# 30. ArF5+Fol-degen-rev

L pos  
°C = 44.3 44.7 46.0 47.9 50.2 52.8 55.5 58.1 60.5 62.5 63.9 64.5

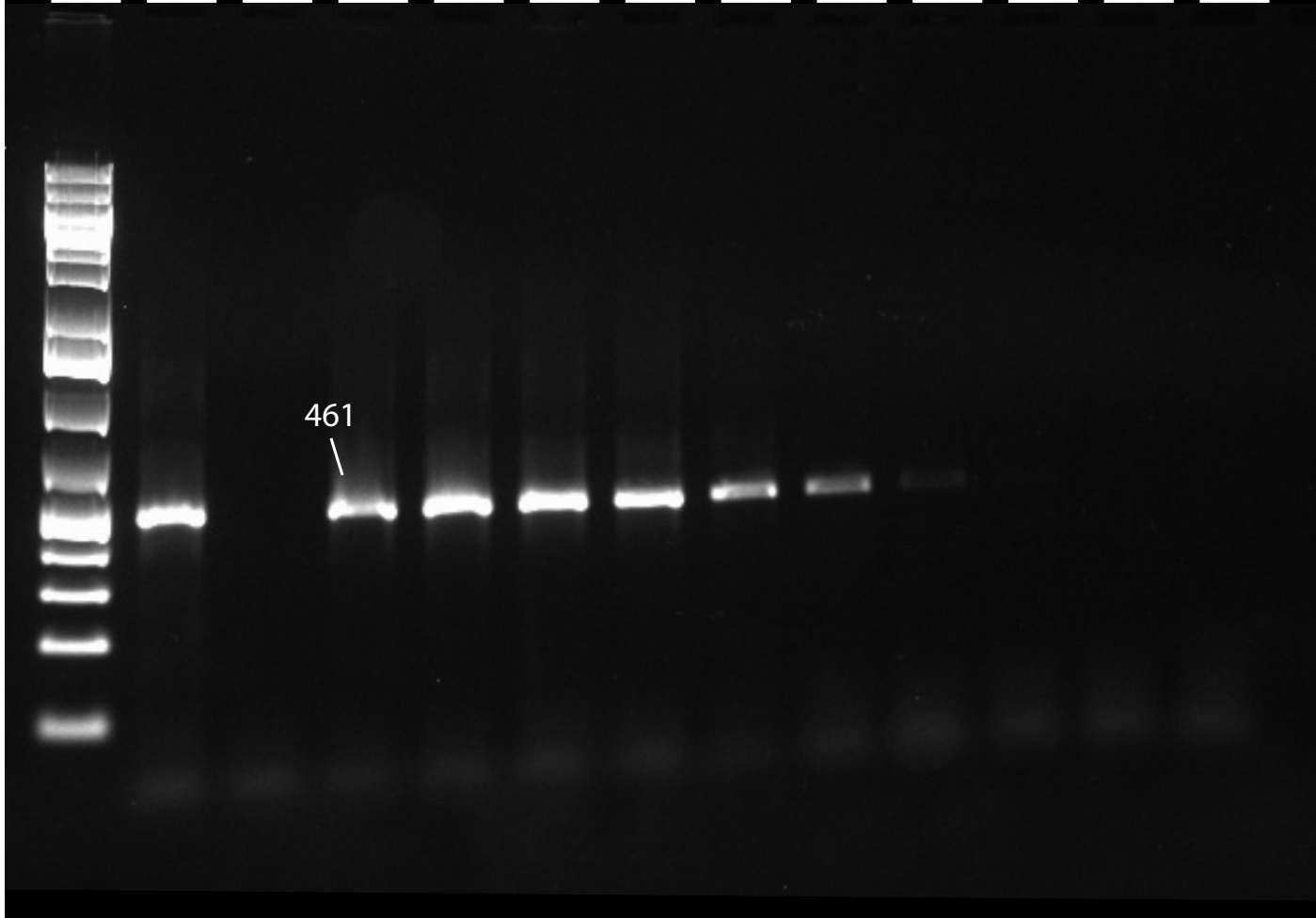
467



# 31. BF2+BR2

L pos  
°C = 44.3 44.7 46.0 47.9 50.2 52.8 55.5 58.1 60.5 62.5 63.9 64.5

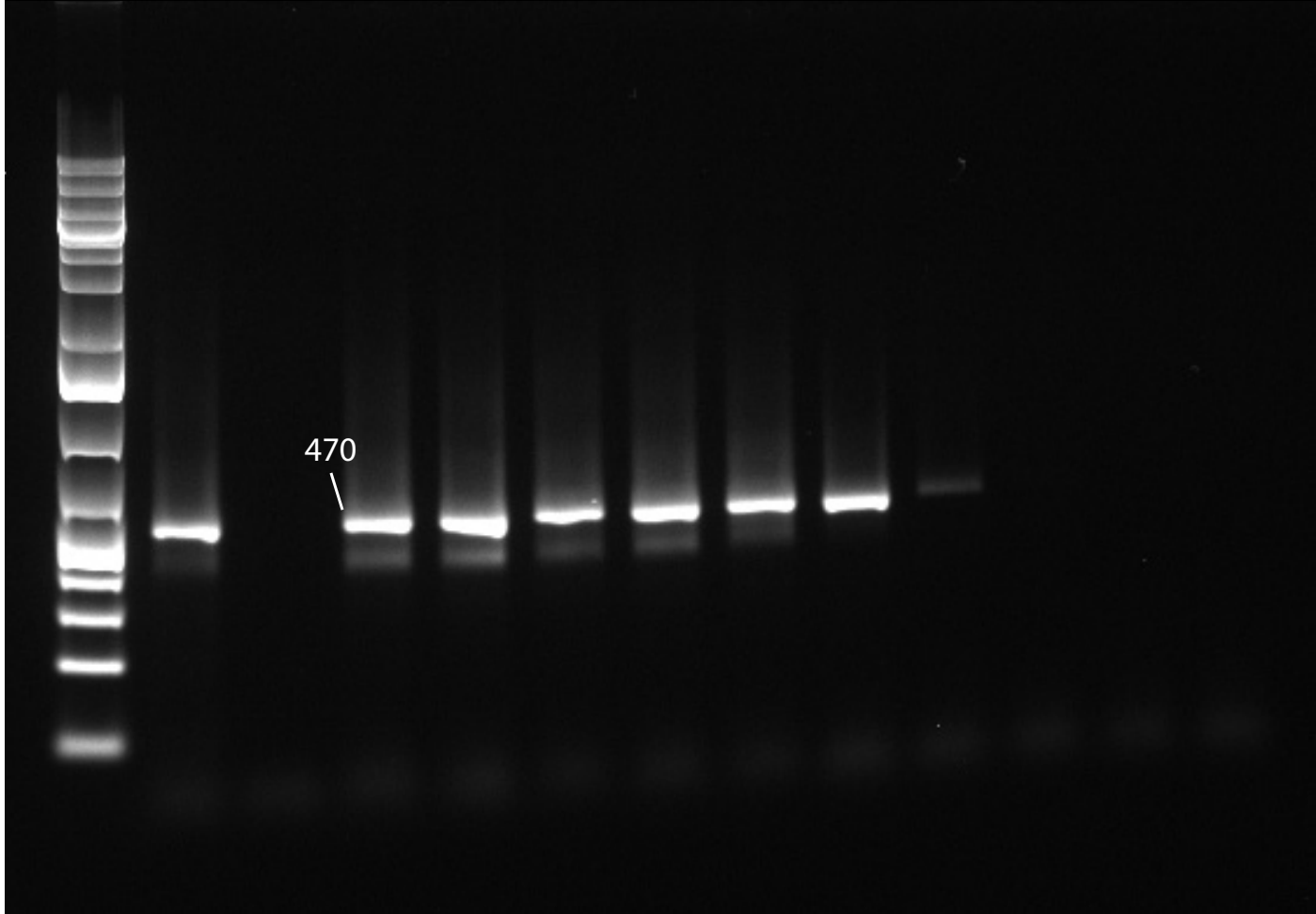
461





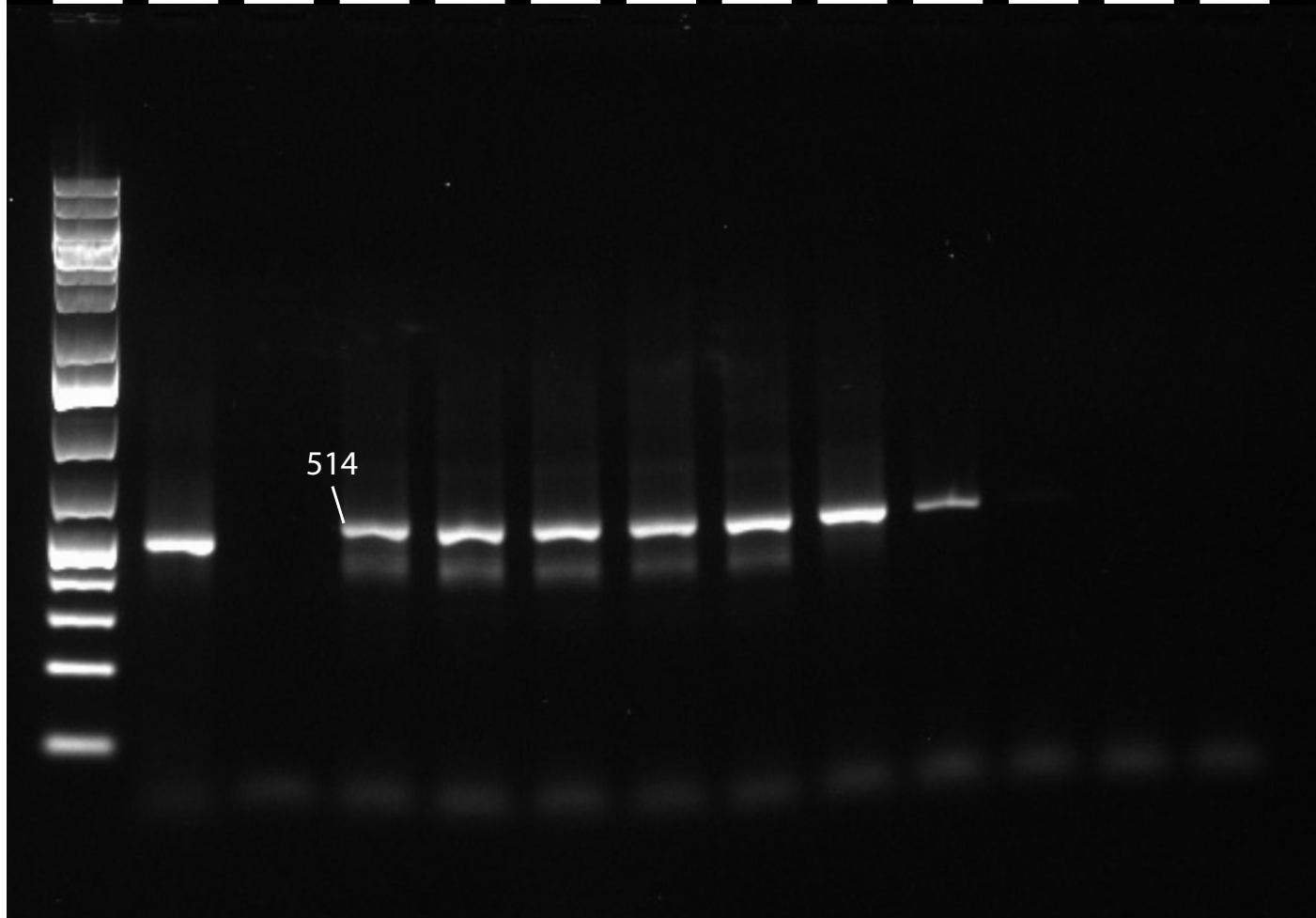
# 32. RonMWASPdeg+C\_LepFolR

L pos  
°C = 44.3 44.7 46.0 47.9 50.2 52.8 55.5 58.1 60.5 62.5 63.9 64.5



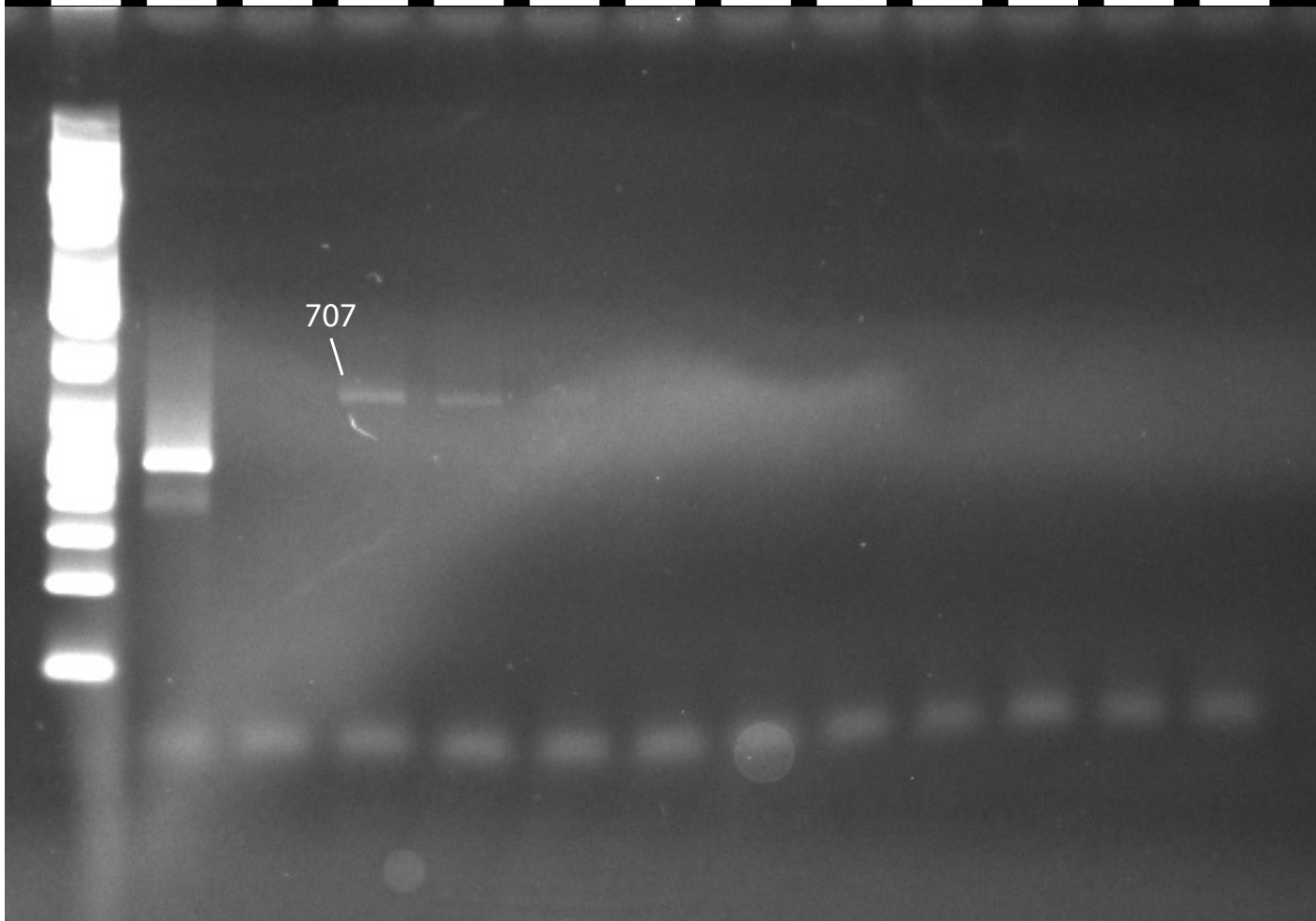
# 33. AncientLepF3+C\_LepFolR

L pos  
°C = 44.3 44.7 46.0 47.9 50.2 52.8 55.5 58.1 60.5 62.5 63.9 64.5



# 34. Fol-degen-for+Fol-degen-rev

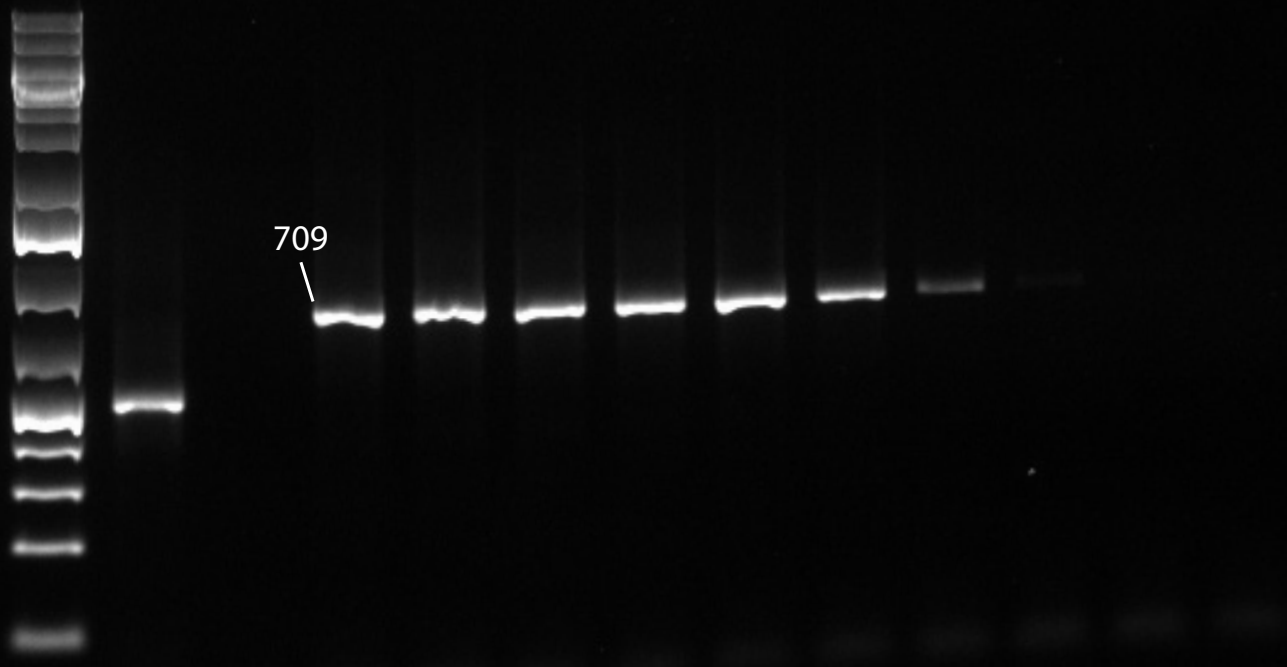
L pos  
°C = 44.3 44.7 46.0 47.9 50.2 52.8 55.5 58.1 60.5 62.5 63.9 64.5



# 35. dgLCO1490+dgHCO2198

L pos  
°C = 44.3 44.7 46.0 47.9 50.2 52.8 55.5 58.1 60.5 62.5 63.9 64.5

709



# 36. LCO1490+HCO2198

L pos  
°C = 44.3 44.7 46.0 47.9 50.2 52.8 55.5 58.1 60.5 62.5 63.9 64.5

709

