

1 **Estimating transition dates from status-based phenology**

2 **observations: a test of methods**

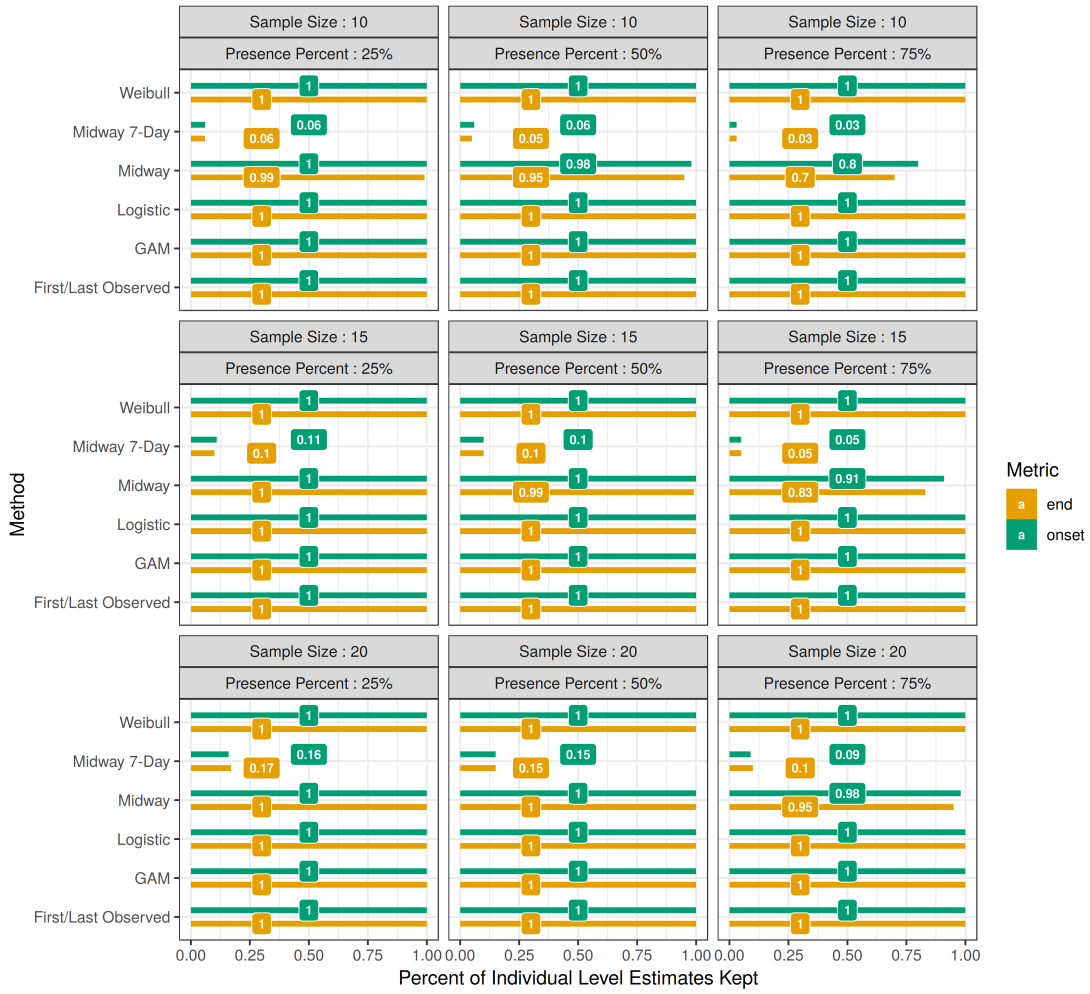
3 Shawn D. Taylor

4 Supplemental Images S1-S3



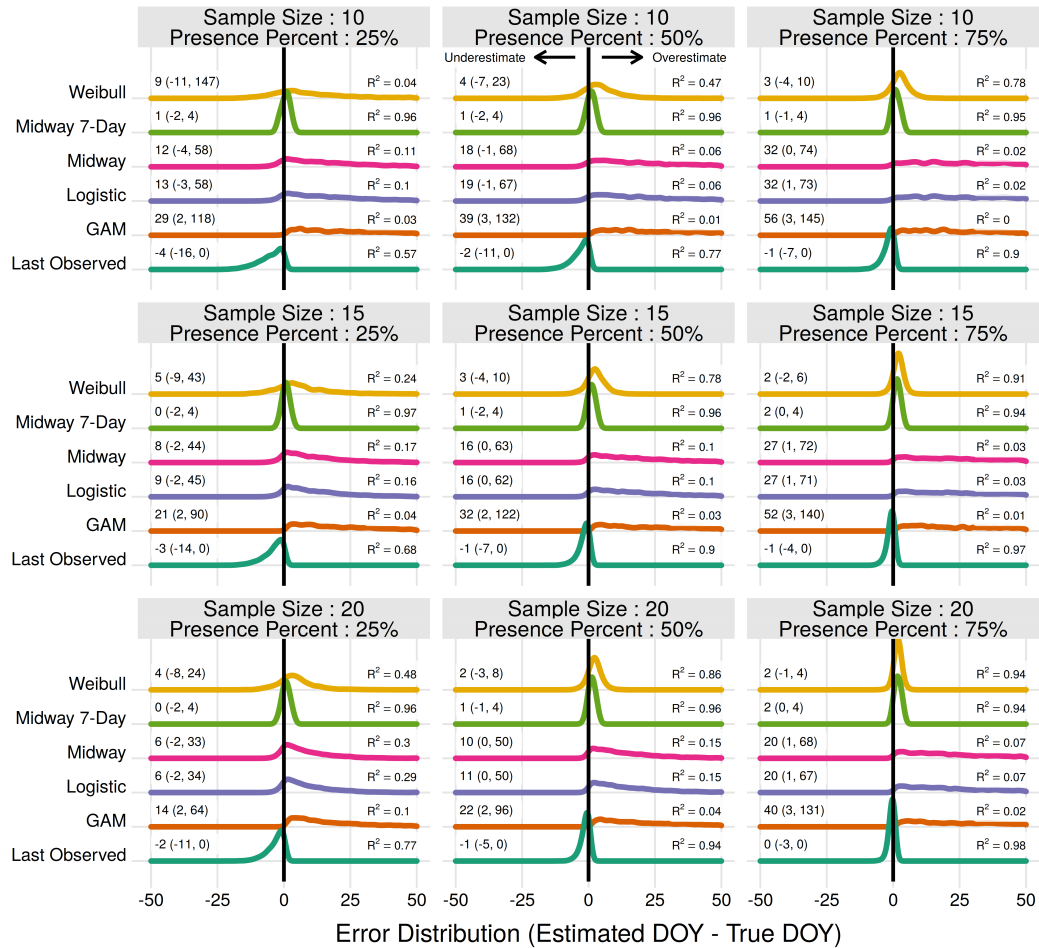
5

6 Figure S1: For all population level analysis, the proportion of estimates which were
 7 usable for each estimator method. Randomly drawn sets of observations may not be
 8 usable due to filtering (ie. requiring an absence observation within 7 days of a presence
 9 observation) or due to lack of convergence in the models.



10

11 Figure S2: As in Figure S1, but for all individual level analysis.



12

13 Figure S3: The error distribution of all estimators for individual flowering end. Text
 14 values represent the median error and the 95% quantile range in parenthesis.