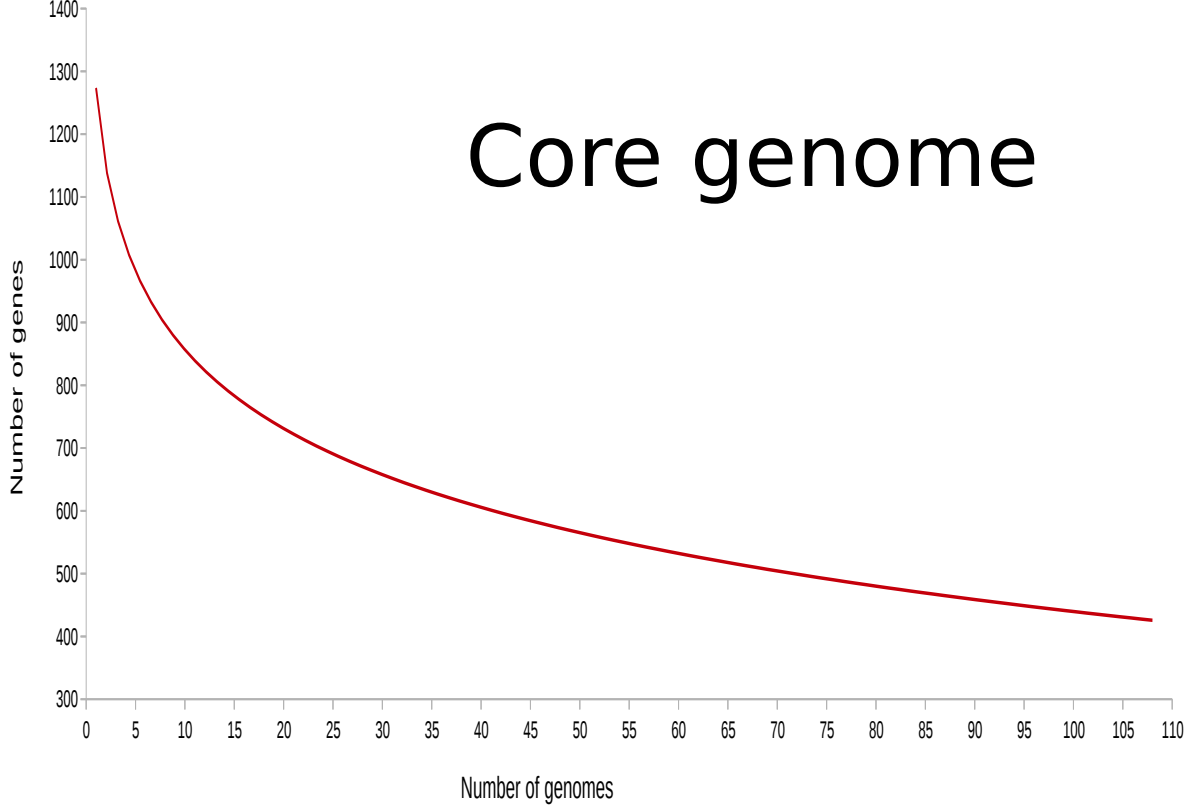
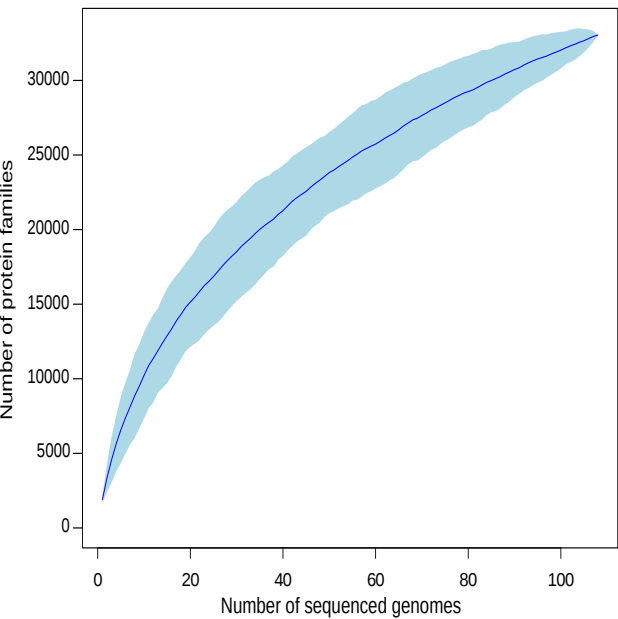


Core genome



Pangenome



Species core genome

Number of genomes	Species	Number of core proteins	Average number of proteins
3	<i>S. gallolyticus</i>	1964	2266 +/- 56
3	<i>S. salivarius</i>	1646	1982 +/- 43
4	<i>S. mutans</i>	1627	1914 +/- 36
4	<i>S. dysgalactiae</i>	1491	2061 +/- 140
4	<i>S. suis</i>	1438	1962 +/- 101
9	<i>S. thermophilus</i>	1370	1973 +/- 207
16	<i>S. pneumoniae</i>	1334	1999 +/- 104
6	<i>S. thermophilus</i>	1314	1915 +/- 137
24	<i>S. pneumoniae</i>	1310	2035 +/- 165
19	<i>S. pyogenes</i>	1213	1808 +/- 111