

Figure S1 - Purifying selection on housekeeping genes

(A) The distribution of the dN/dS ratio. (B) The dN/dS ratios of total (all HK), common (co-HK) and species-specific (sp-HK) housekeeping genes were compared between pig and human (Mann-Whitney test, * denoted $P < 0.05$), respectively.

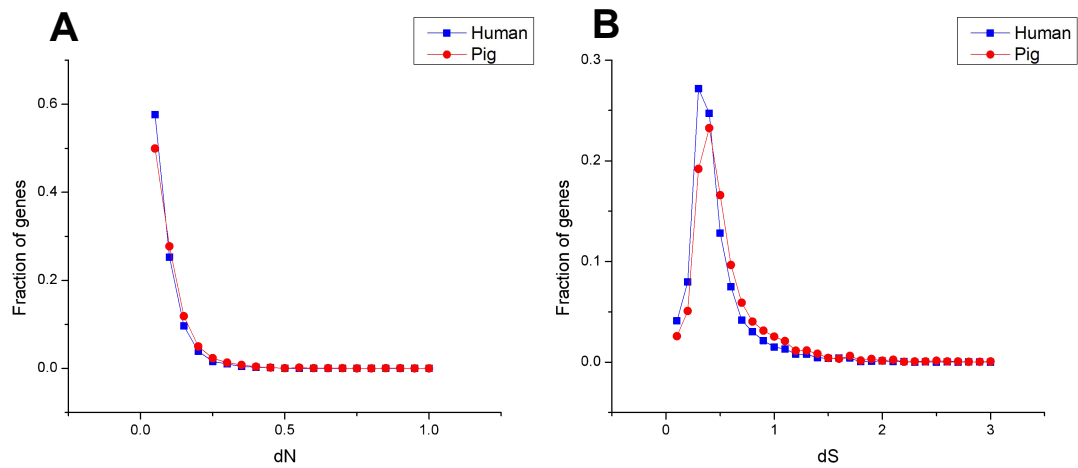
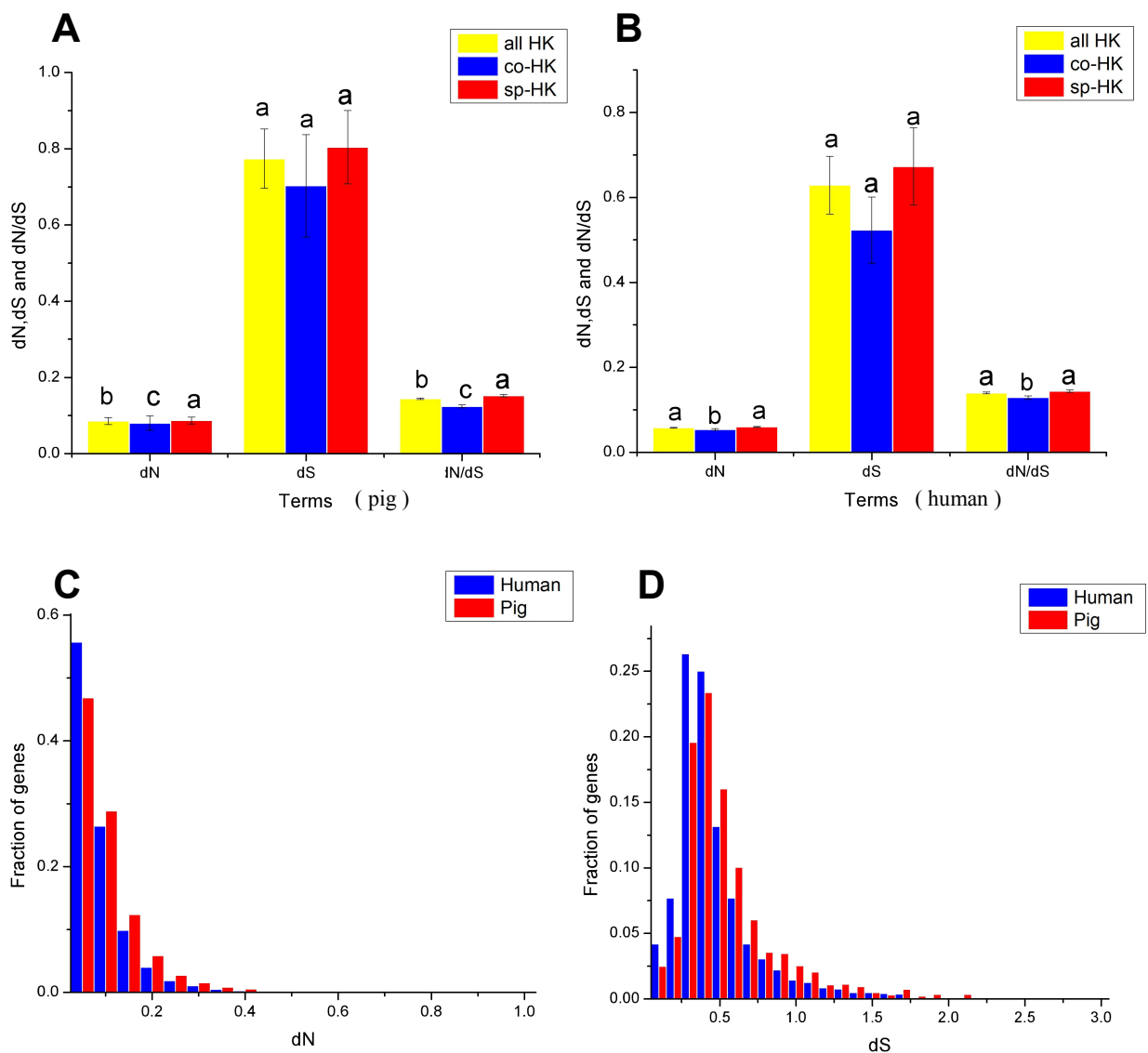


Figure S2 The distribution of dN (A) and dS (B) ratio for housekeeping genes of pig and human.



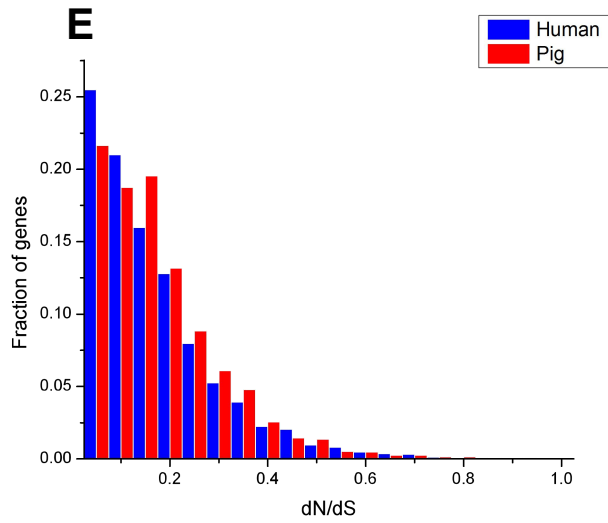


Figure S3 - Comparison of evolutionary features of housekeeping genes

(A) - (B) The dN, dS and dN/dS of all, common and species-specific of pig and human housekeeping genes were compared based on the Mann-Whitney test, respectively. All such means which share a common English letter are similar; otherwise, they differ significantly at $p < 0.05$. (C) - (E) Distributions of dN, dS and dN/dS of species-specific housekeeping genes in pig and human.