

Additional file 9

Analysis for the diagnosis 'any dementia'

This analysis considers patients with one of the following diagnoses:

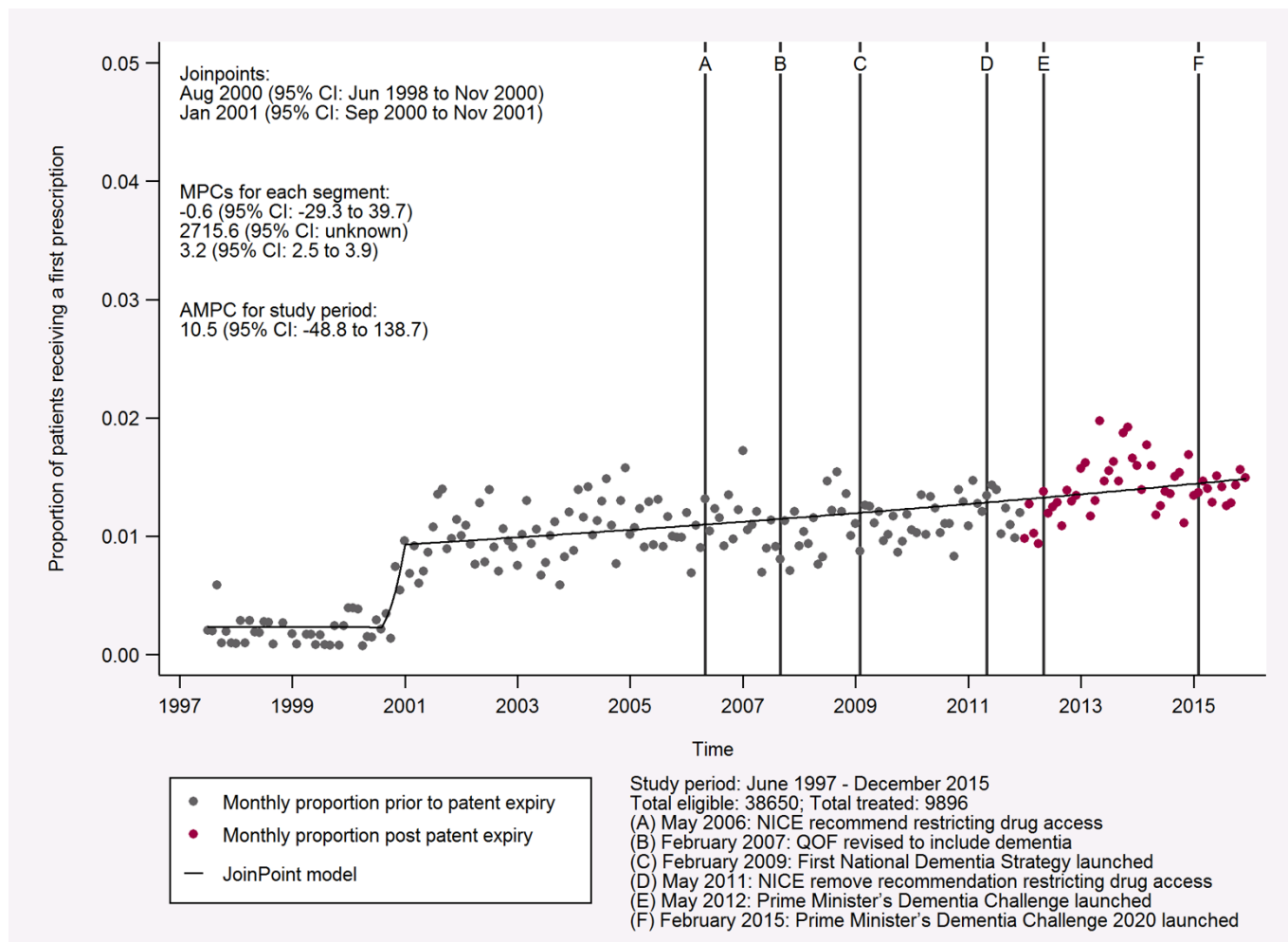
- Probable Alzheimer's disease
- Possible Alzheimer's disease
- Vascular dementia
- Other dementia
- Mixed including probable Alzheimer's disease
- Mixed including possible Alzheimer's disease
- Mixed excluding Alzheimer's disease
- Undiagnosed dementia

Table S9.1: The number of treated patients and relevant dates for the 'any dementia' analyses.

Analysis	First record in CPRD	Analysis start date	Treated patients	Eligible patients
AChE inhibitors	30/05/1997	01/06/1997	9896	38650
NMDA receptor antagonists	16/12/2002	01/01/2003	1961	35625
Donepezil	30/05/1997	01/06/1997	7611	38650
Rivastigmine	29/09/1998	01/10/1998	1621	38130
Galantamine	12/01/2001	01/02/2001	1188	36994

Note that donepezil, rivastigmine and galantamine are acetylcholinesterase (AChE) inhibitors and memantine is an N-Methyl-D-aspartate (NMDA) receptor antagonist. The end date of the study is 31/12/2015.

Figure S9.1: Indicative graph of acetylcholinesterase (AChE) inhibitor prescriptions in patients with any dementia.



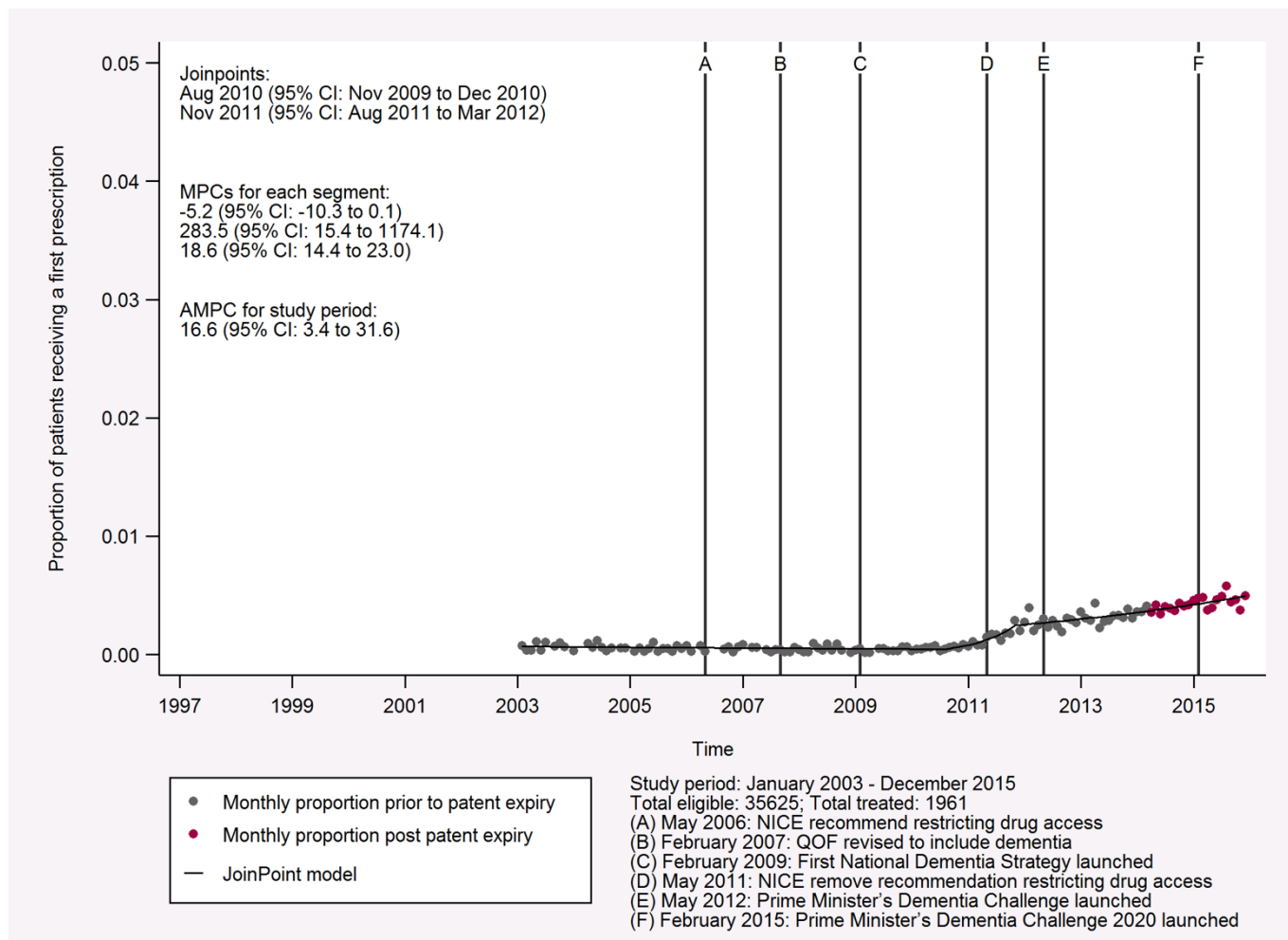
This graph shows the proportion of patients with any dementia receiving their first prescription for an AChE inhibitor (donepezil, rivastigmine, galantamine) each month from June 1997 to December 2015. The fixed lines indicate events with the potential to effect prescription rates during the study period. The joinpoints, monthly percent change (MPC) for each segment and the average monthly percent change (AMPC) for the entire study period are also presented.

Table S9.2: Joinpoint analysis output for acetylcholinesterase (AChE) inhibitor prescriptions in patients with any dementia.

	Segment 1	Segment 2	Segment 3
Joinpoint	Not applicable	August 2000	January 2001
Joinpoint 95% LCL	Not applicable	June 1998	September 2000
Joinpoint 95% UCL	Not applicable	November 2000	November 2001
Intercept estimate	6.837	-6683.509	-67.325
Intercept standard error	345.577	34621.871	6.807
Intercept test statistic	0.020	-0.193	-9.890
Intercept p-value	0.984	0.847	0.000
Slope estimate	-0.006	3.338	0.031
Slope standard error	0.173	17.305	0.003
Slope test statistic	-0.037	0.193	9.248
Slope p-value	0.970	0.847	0.000
Slope change estimate	Not applicable	3.344	-3.306
Slope change standard error	Not applicable	17.305	17.305
Slope change test statistic	Not applicable	0.193	-0.191
Slope change p-value	Not applicable	0.847	0.849

Output from the joinpoint analysis of the proportion of patients with any dementia receiving their first prescription for an AChE inhibitor (donepezil, rivastigmine, galantamine) each month from June 1997 to December 2015. Segments are the period between two join points and are numbered chronologically. Segment 1 begins in June 1997 and the remaining segments begin with each joinpoint. Segment 3 ends in December 2015.

Figure S9.2: Indicative graph N-Methyl-D-aspartate (NMDA) receptor antagonist prescriptions in patients with probable Alzheimer’s disease.



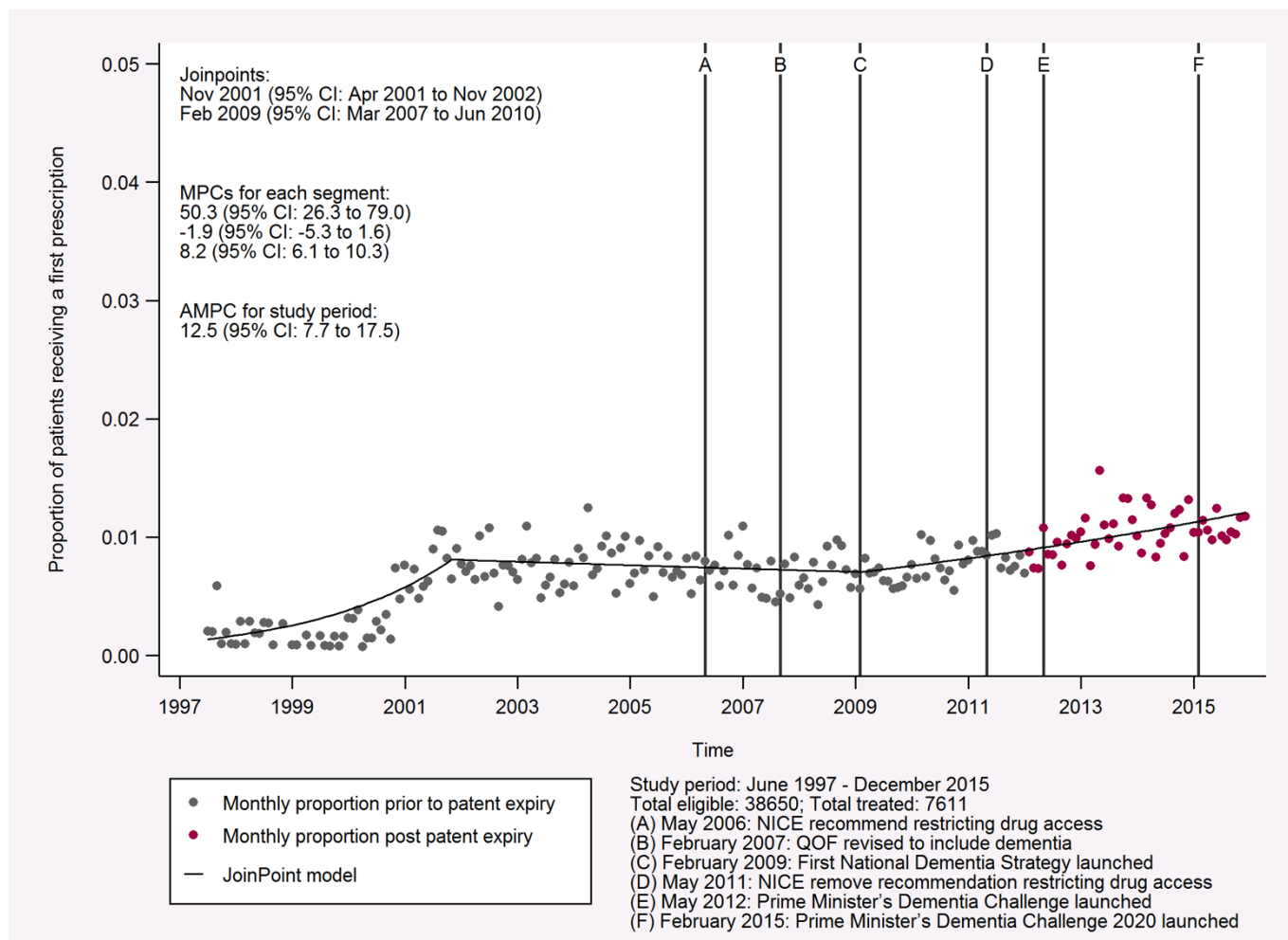
This graph shows the proportion of patients with any dementia receiving their first prescription for an NMDA receptor antagonist (memantine) each month from January 2003 to December 2015. The fixed lines indicate events with the potential to effect prescription rates during the study period. The joinpoints, monthly percent change (MPC) for each segment and the average monthly percent change (AMPC) for the entire study period are also presented.

Table S9.3: Joinpoint analysis output for N-Methyl-D-aspartate (NMDA) receptor antagonist prescriptions in patients with any dementia.

	Segment 1	Segment 2	Segment 3
Joinpoint	Not applicable	August 2010	November 2011
Joinpoint 95% LCL	Not applicable	November 2009	August 2011
Joinpoint 95% UCL	Not applicable	December 2010	March 2012
Intercept estimate	100.313	-2710.001	-349.231
Intercept standard error	55.359	1219.196	36.632
Intercept test statistic	1.812	-2.223	-9.534
Intercept p-value	0.073	0.028	0.000
Slope estimate	-0.054	1.344	0.171
Slope standard error	0.028	0.606	0.018
Slope test statistic	-1.947	2.217	9.382
Slope p-value	0.054	0.029	0.000
Slope change estimate	Not applicable	1.398	-1.173
Slope change standard error	Not applicable	0.607	0.606
Slope change test statistic	Not applicable	2.303	-1.935
Slope change p-value	Not applicable	0.023	0.055

Output from the joinpoint analysis of the proportion of patients with any dementia receiving their first prescription for an NMDA receptor antagonist (memantine) each month from January 2003 to December 2015. Segments are the period between two join points and are numbered chronologically. Segment 1 begins in January 2003 and the remaining segments begin with each joinpoint. Segment 3 ends in December 2015.

Figure S9.3: Indicative graph of donepezil prescriptions in patients with any dementia.



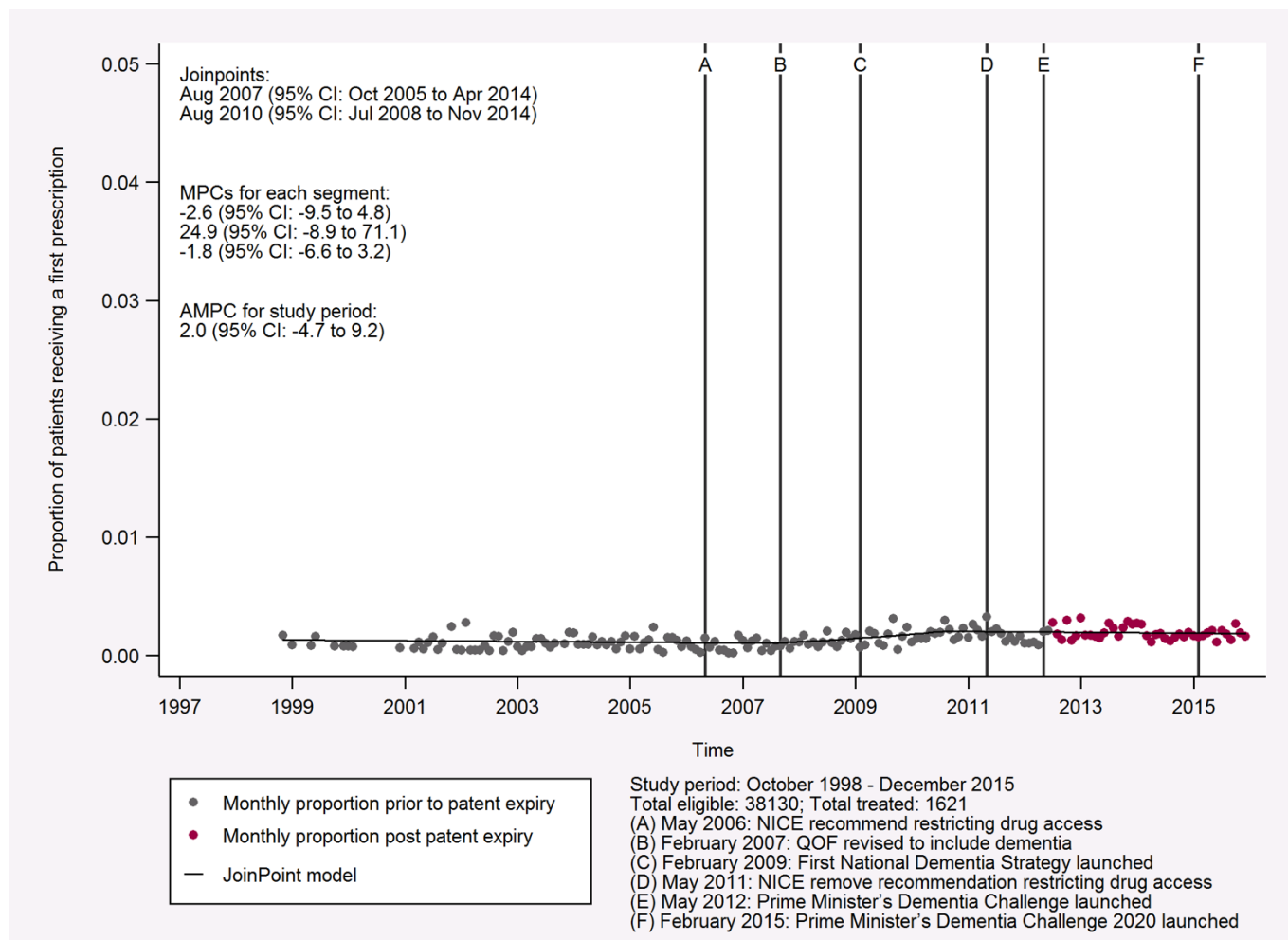
This graph shows the proportion of patients with any dementia receiving their first prescription for donepezil each month from June 1997 to December 2015. The fixed lines indicate events with the potential to effect prescription rates during the study period. The joinpoints, monthly percent change (MPC) for each segment and the average monthly percent change (AMPC) for the entire study period are also presented.

Table S9.4: Joinpoint analysis output for donepezil prescriptions in patients with any dementia.

	Segment 1	Segment 2	Segment 3
Joinpoint	Not applicable	November 2001	February 2009
Joinpoint 95% LCL	Not applicable	April 2001	March 2007
Joinpoint 95% UCL	Not applicable	November 2002	June 2010
Intercept estimate	-821.143	33.594	-163.100
Intercept standard error	177.033	36.026	19.951
Intercept test statistic	-4.638	0.932	-8.175
Intercept p-value	0.000	0.352	0.000
Slope estimate	0.408	-0.019	0.079
Slope standard error	0.089	0.018	0.010
Slope test statistic	4.606	-1.068	7.944
Slope p-value	0.000	0.287	0.000
Slope change estimate	Not applicable	-0.427	0.098
Slope change standard error	Not applicable	0.090	0.021
Slope change test statistic	Not applicable	-4.727	4.773
Slope change p-value	Not applicable	0.000	0.000

Output from the joinpoint analysis of the proportion of patients with any dementia receiving their first prescription for donepezil each month from June 1997 to December 2015. Segments are the period between two join points and are numbered chronologically. Segment 1 begins in June 1997 and the remaining segments begin with each joinpoint. Segment 3 ends in December 2015.

Figure S9.4: Indicative graph of rivastigmine prescriptions in patients with any dementia.



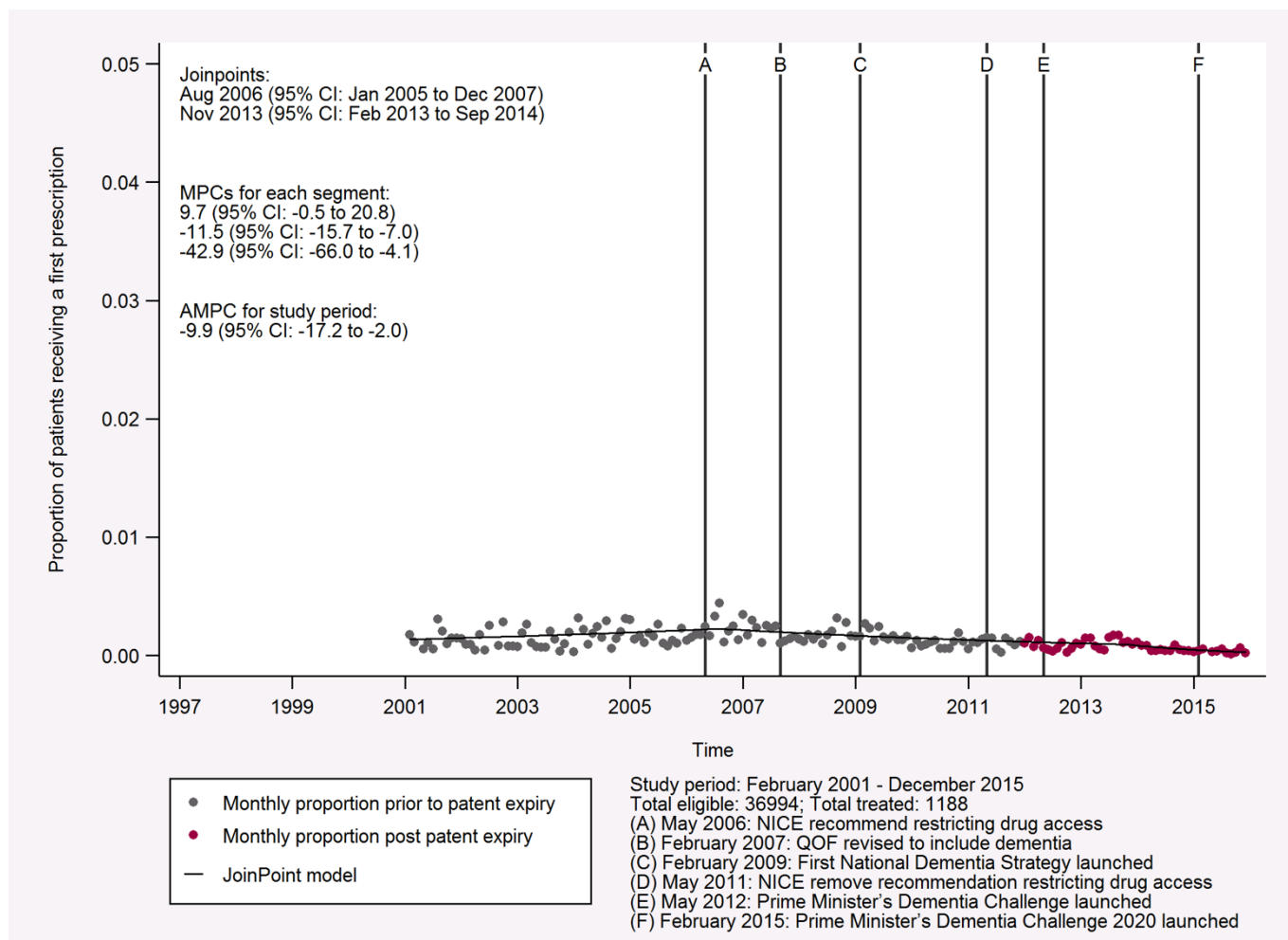
This graph shows the proportion of patients with any dementia receiving their first prescription for rivastigmine each month from October 1998 to December 2015. The fixed lines indicate events with the potential to effect prescription rates during the study period. The joinpoints, monthly percent change (MPC) for each segment and the average monthly percent change (AMPC) for the entire study period are also presented.

Table S9.5: Joinpoint analysis output for rivastigmine prescriptions in patients with any dementia.

	Segment 1	Segment 2	Segment 3
Joinpoint	Not applicable	August 2007	August 2010
Joinpoint 95% LCL	Not applicable	October 2005	July 2008
Joinpoint 95% UCL	Not applicable	April 2014	November 2014
Intercept estimate	46.011	-452.677	30.805
Intercept standard error	74.337	320.359	50.930
Intercept test statistic	0.619	-1.413	0.605
Intercept p-value	0.537	0.160	0.546
Slope estimate	-0.026	0.222	-0.018
Slope standard error	0.037	0.159	0.025
Slope test statistic	-0.710	1.393	-0.727
Slope p-value	0.479	0.166	0.468
Slope change estimate	Not applicable	0.248	-0.240
Slope change standard error	Not applicable	0.164	0.161
Slope change test statistic	Not applicable	1.517	-1.490
Slope change p-value	Not applicable	0.131	0.138

Output from the joinpoint analysis of the proportion of patients with any dementia receiving their first prescription for rivastigmine each month from October 1998 to December 2015. Segments are the period between two join points and are numbered chronologically. Segment 1 begins in October 1998 and the remaining segments begin with each joinpoint. Segment 3 ends in December 2015.

Figure S9.5: Indicative graph of galantamine prescriptions in patients with any dementia.



This graph shows the proportion of patients with any dementia receiving their first prescription for galantamine each month from February 2001 to December 2015. The fixed lines indicate events with the potential to effect prescription rates during the study period. The joinpoints, monthly percent change (MPC) for each segment and the average monthly percent change (AMPC) for the entire study period are also presented.

Table S9.6: Joinpoint analysis output for galantamine prescriptions in patients with any dementia.

	Segment 1	Segment 2	Segment 3
Joinpoint	Not applicable	August 2006	November 2013
Joinpoint 95% LCL	Not applicable	January 2005	February 2013
Joinpoint 95% UCL	Not applicable	December 2007	September 2014
Intercept estimate	-191.240	238.361	1122.422
Intercept standard error	98.265	50.315	528.582
Intercept test statistic	-1.946	4.737	2.123
Intercept p-value	0.054	0.000	0.035
Slope estimate	0.092	-0.122	-0.561
Slope standard error	0.049	0.025	0.262
Slope test statistic	1.882	-4.867	-2.138
Slope p-value	0.062	0.000	0.034
Slope change estimate	Not applicable	-0.214	-0.439
Slope change standard error	Not applicable	0.055	0.263
Slope change test statistic	Not applicable	-3.889	-1.666
Slope change p-value	Not applicable	0.000	0.098

Output from the joinpoint analysis of the proportion of patients with any dementia receiving their first prescription for galantamine each month from February 2001 to December 2015. Segments are the period between two join points and are numbered chronologically. Segment 1 begins in February 2001 and the remaining segments begin with each joinpoint. Segment 3 ends in December 2015.