

Figure S1: Average balanced accuracy for BRCA subtype classification by subtype using TCGA microarray training data and TCGA RNA-seq test data.

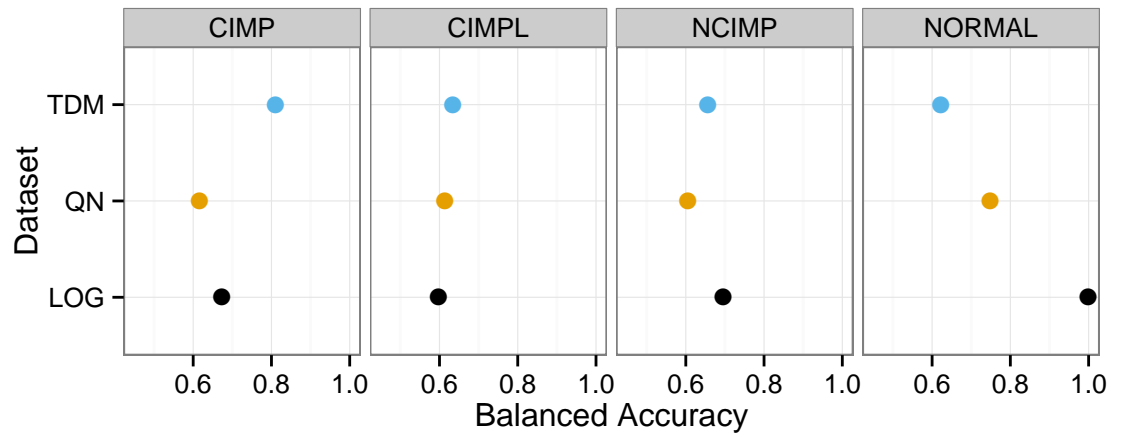


Figure S2: Average balanced accuracy for colon/rectal cancer CIMP classification using TCGA microarray for training and TCGA RNA-seq for test data.

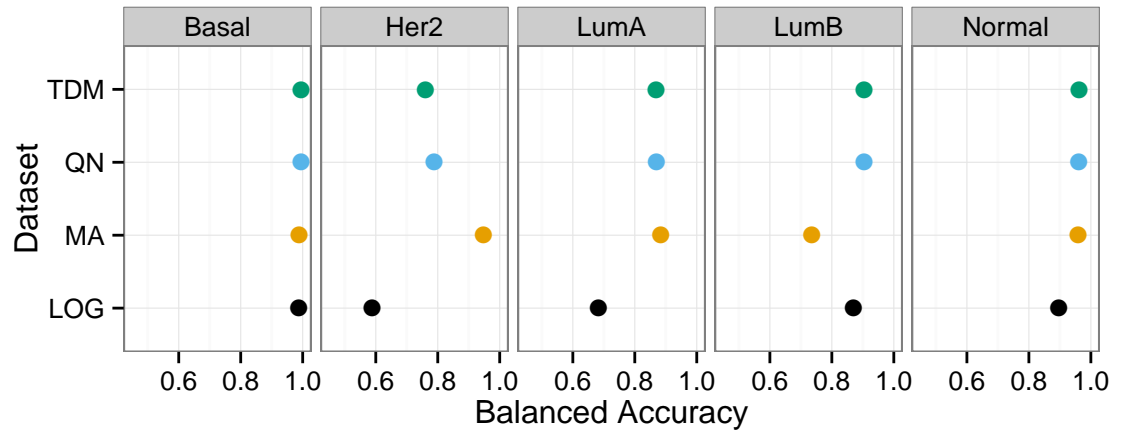


Figure S3: Average balanced accuracy for BRCA subtype classification by subtype using METABRIC microarray training data and TCGA RNA-seq test data as well as TCGA microarray test data for comparison.