



FIGURE S1. Map of Peninsular Malaysia and the sampling locations (red circles). From north to south: Langkawi Island ($6^{\circ} 21' N$, $99^{\circ} 48' E$; sampling period: 2008-2012), Carey Island ($2^{\circ} 52' N$, $101^{\circ} 22' E$; sampling period: 2009-2012), Sungai Pulai Estuary, Johor ($1^{\circ} 20' N$, $103^{\circ} 32' E$; sampling period: 2013). The map was made using the `ggmap` R package (Version 2.4; Kahle and Wickham, 2013).

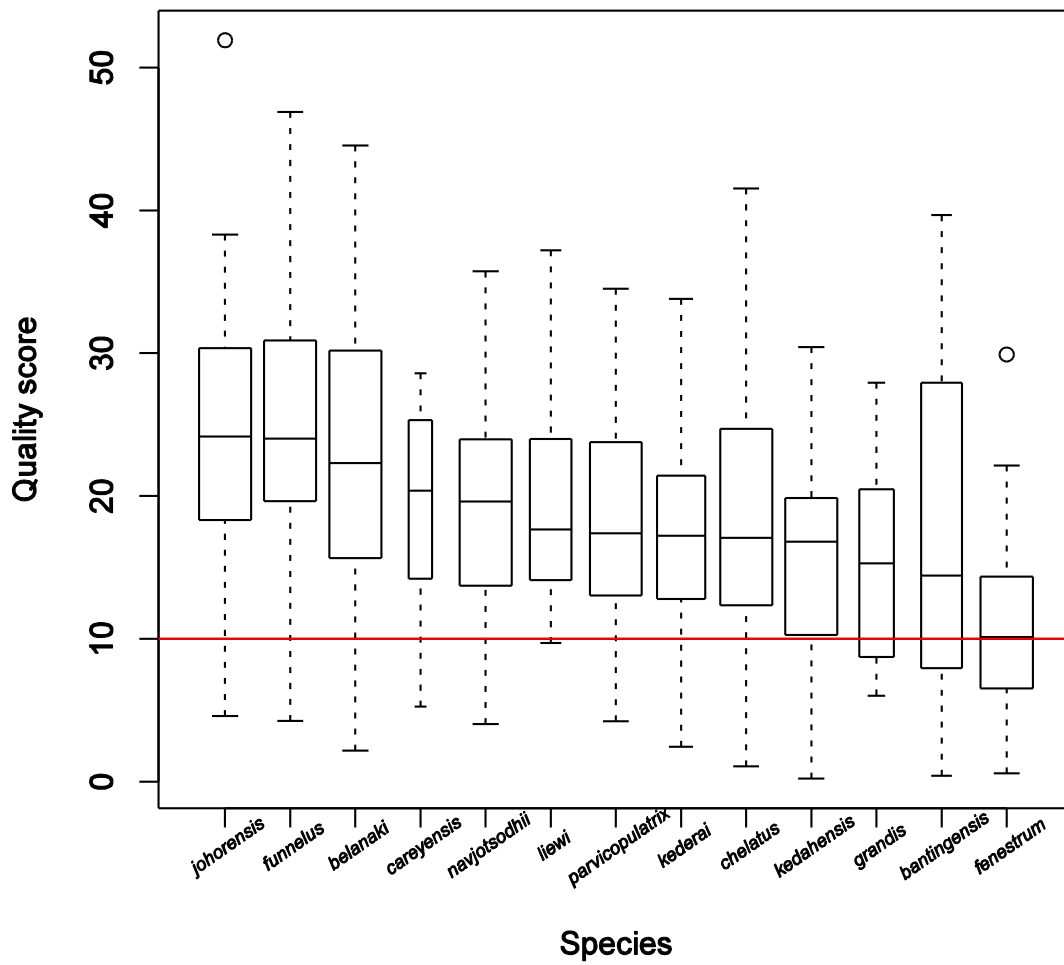


FIGURE S2. Box plots of quality score distribution of samples in 13 *Ligophorus* species. The width of the box plots is proportional to the sample size. Samples that have quality score below 10 (horizontal red line) are excluded from further analysis.

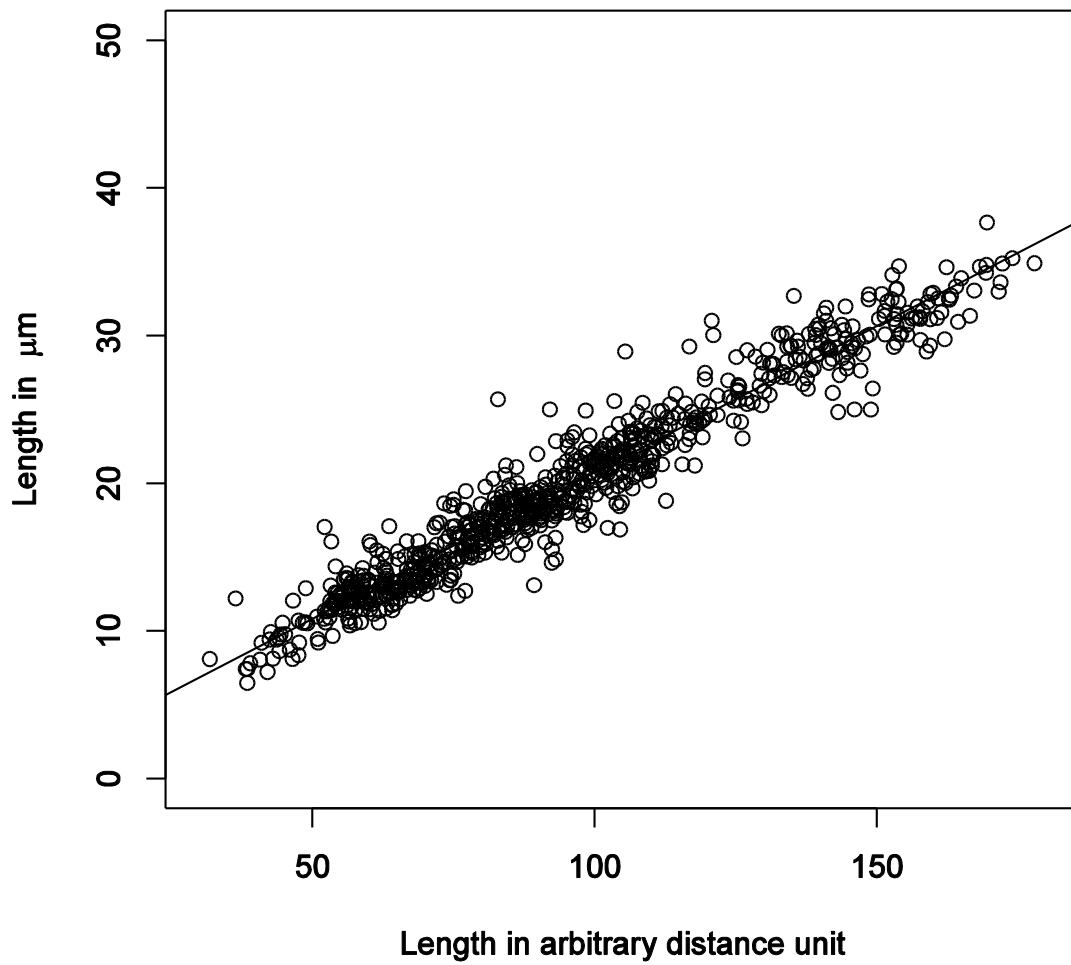


FIGURE S3. Regression of LM1-LM3 and LM1-LM5 distances in physical units against corresponding distances in arbitrary units. The estimated regression equation is approximately $Y = 0.9 + 0.2X$.