

Table S1 Top ten bacterial genera based on OTU number among the cave samples.

CMP			CLP			CFP		
Genus	Total OTUs	Total Reads	Genus	Total OTUs	Total Reads	Genus	Total OTUs	Total Reads
<i>Gemmata</i>	119	2906	<i>Gemmata</i>	102	5589	<i>Rubrobacter</i>	31	2333
<i>FFCH10602</i>	61	2072	<i>DA101</i>	51	60856	<i>Streptomyces</i>	14	1807
<i>DA101</i>	57	41603	<i>FFCH10602</i>	30	619	<i>Rhodoplanes</i>	11	252
<i>Planctomyces</i>	31	1721	<i>Planctomyces</i>	29	3504	<i>Candidatus koribacter</i>	8	39
<i>Candidatus Solibacter</i>	28	4211	<i>Paenibacillus</i>	28	1148	<i>Candidatus Solibacter</i>	8	84
<i>Fimbriimonas</i>	27	447	<i>Candidatus Solibacter</i>	20	2683	<i>Mycobacterium</i>	8	607
<i>Candidatus Koribacter</i>	25	1289	<i>Mycobacterium</i>	17	4709	<i>Nocardioides</i>	7	349
<i>Candidatus xiphinematobacter</i>	16	6172	<i>Rhodoplanes</i>	16	11985	<i>Nitrospira</i>	5	43
<i>Pirellula</i>	15	951	<i>Clostridium</i>	15	1683	<i>Afifella</i>	5	23
<i>Paenibacillus</i>	14	65	<i>Chloroflexus</i>	14	3002	<i>Euzebya</i>	5	174

Table S2 Top ten OTU's based on total read count number among the cave samples.

OTU Table Id	Read Count	CFP	CLP	CMP	Phylum	Class
denovo6722	133692	127091	3526	3075	<i>Actinobacteria</i>	<i>Actinobacteria</i>
denovo4035	60527	45	44916	15566	<i>Verrucomicrobia</i>	<i>Spartobacteria</i>
denovo4892	35459	35028	367	64	<i>Actinobacteria</i>	<i>Actinobacteria</i>
denovo7214	32809	26	11873	20910	<i>Verrucomicrobia</i>	<i>Spartobacteria</i>
denovo7994	21737	1292	8085	12360	<i>Acidobacteria</i>	<i>Chloracidobacteria</i>
denovo9544	14601	655	2812	11134	<i>Acidobacteria</i>	<i>Acidobacteria-6</i>
denovo8195	14007	194	3838	9975	<i>Acidobacteria</i>	<i>iii1-8</i>
denovo7744	9830	45	5661	4124	<i>Chloroflexi</i>	<i>TK10</i>
denovo1827	9908	2	2504	7402	<i>Chloroflexi</i>	<i>Ktedonobacteria</i>
denovo5760	7536	14	6223	1299	<i>Actinobacteria</i>	<i>Actinobacteria</i>

Figure S1 Graphical representation of the relative abundance of bacterial diversity from phylum to species level of CFP using Krona visualization tool.

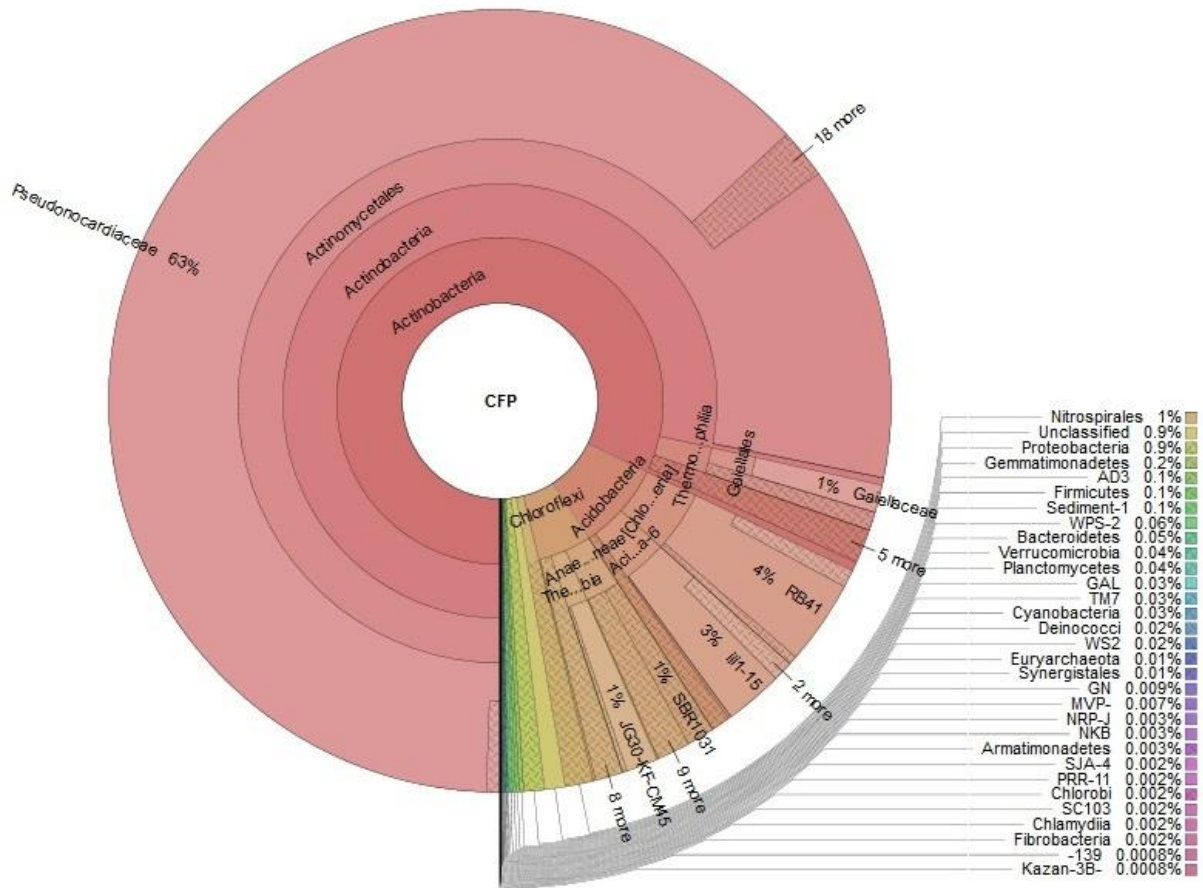


Figure S2 Graphical representation of the relative abundance of bacterial diversity from phylum to species level of CLP using Krona visualization tool.

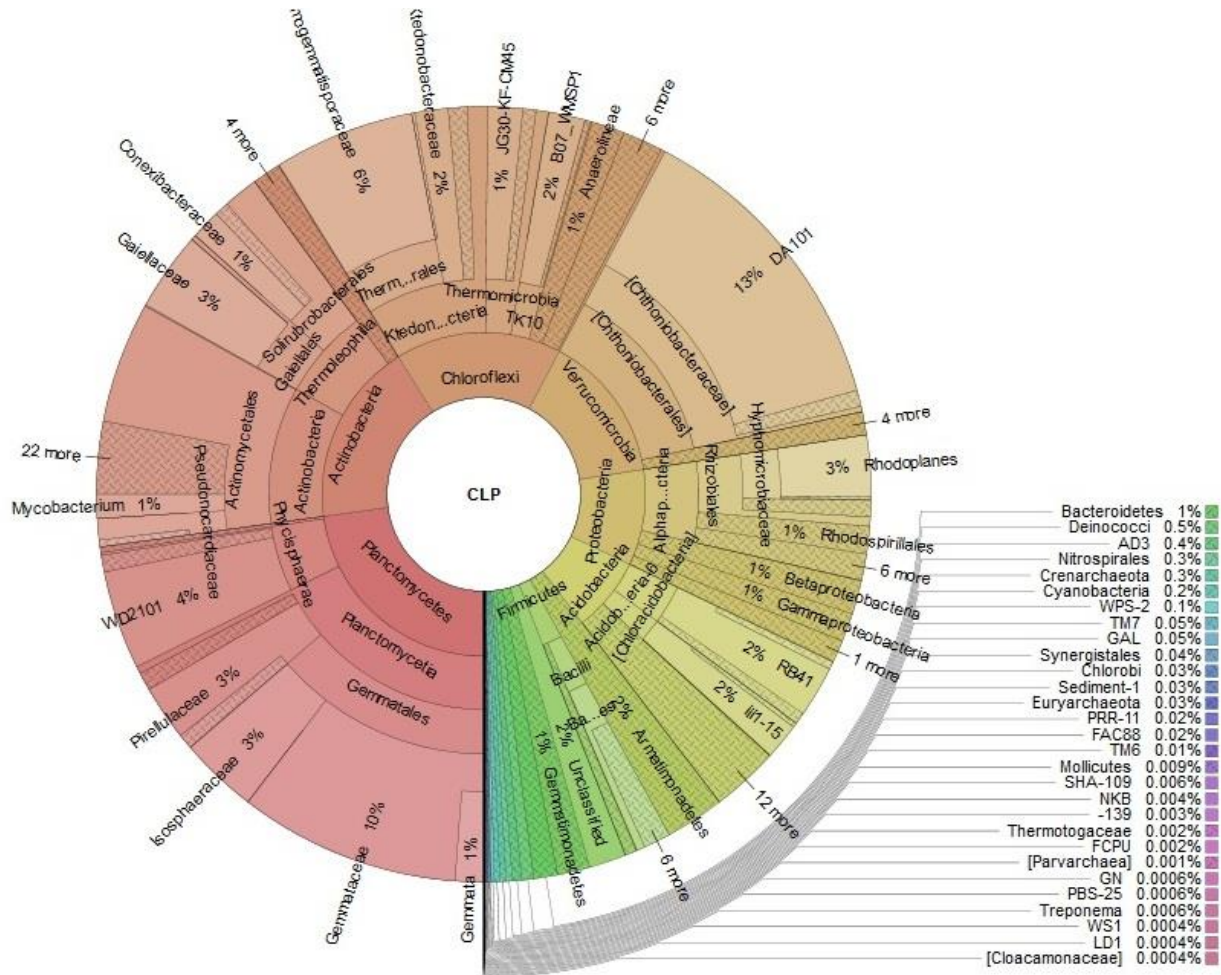


Figure S3 Graphical representation of the relative abundance of bacterial diversity from phylum to species level of CMP using Krona visualization tool.

