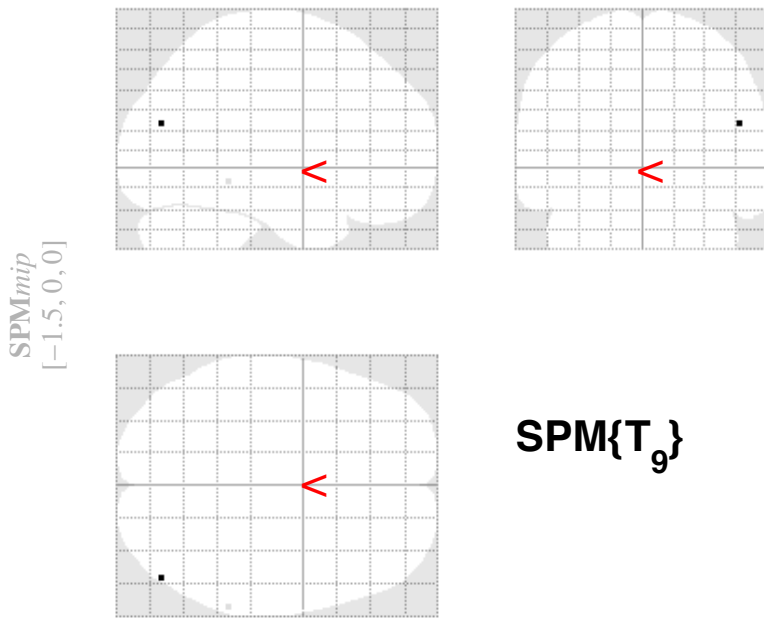
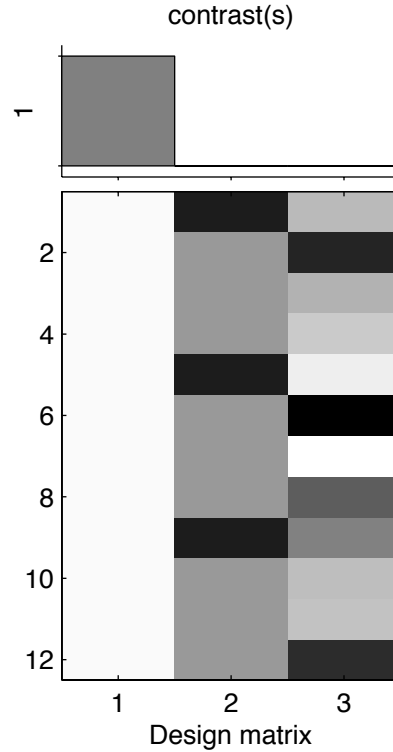


SYN x 2back increases, 60 mg only, 5p7mm



SPMresults: SYNx2back_60mg_only_5p7mm
 Height threshold $T = 4.296806$ { $p < 0.001$ (unc.)}
 Extent threshold $k = 0$ voxels



Statistics: p -values adjusted for search volume

set-level		cluster-level			peak-level					mm mm mm			
p	c	$p_{\text{FWE-corr}}$	$q_{\text{FDR-corr}}$	k_E	p_{uncorr}	$p_{\text{FWE-corr}}$	$q_{\text{FDR-corr}}$	T	(Z_{max})	p_{uncorr}			
1.000	2	1.000	0.449	1	0.449	1.000	0.871	4.93	3.35	0.000	50	-78	21
		1.000	0.449	1	0.449	1.000	0.871	4.47	3.16	0.001	64	-42	-9

table shows 3 local maxima more than 8.0mm apart

Height threshold: $T = 4.30$, $p = 0.001$ (1.000)

Extent threshold: $k = 0$ voxels

Expected voxels per cluster, $\langle k \rangle = 1.852$

Expected number of clusters, $\langle c \rangle = 26.94$

FWEp: 10.666, FDRp: Inf, FWEc: Inf, FDRc: Inf

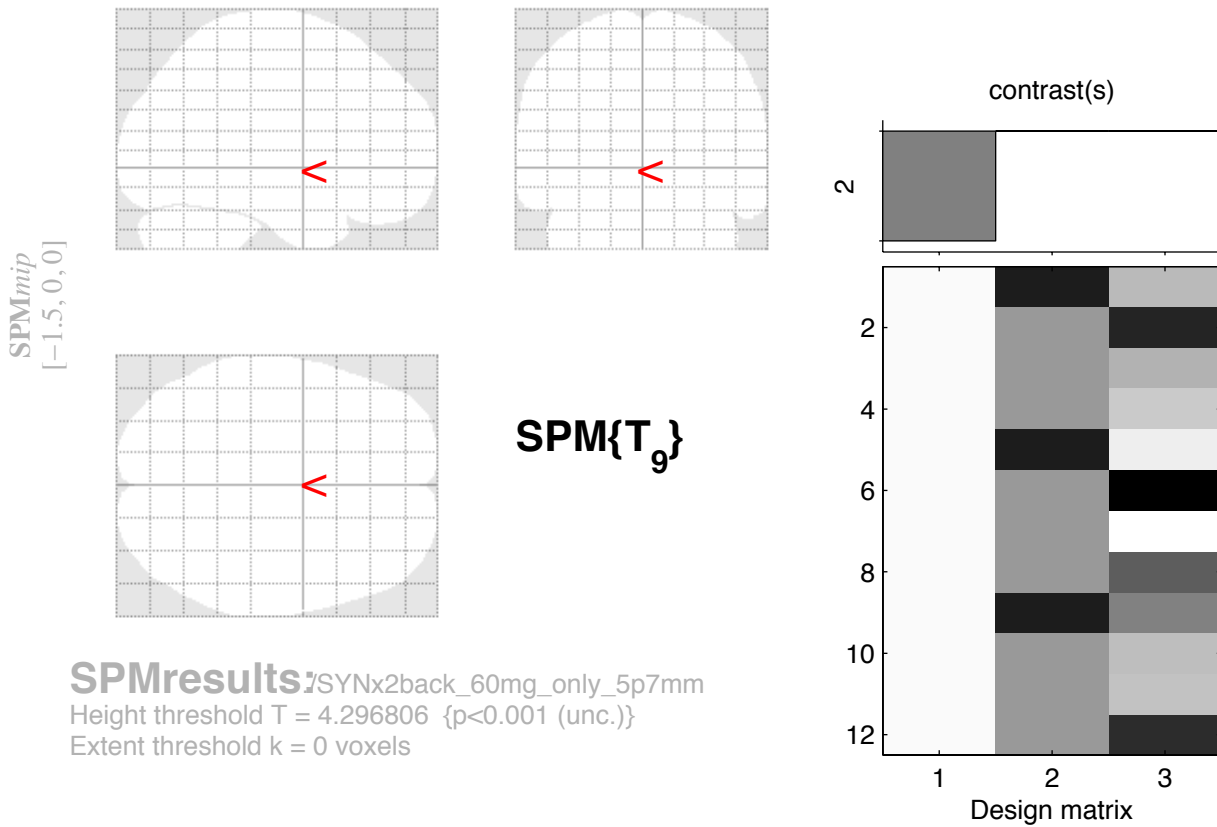
Degrees of freedom = [1.0, 9.0]

FWHM = 9.3 10.4 10.8 mm mm mm; 3.1 3.5 3.6 {voxels}

Volume: 1294110 = 47930 voxels = 1118.6 resels

Voxel size: 3.0 3.0 3.0 mm mm mm; (resel = 38.50 voxels)

SYN x 2 back decreases, 60 mg only, 5p7mm



Statistics: p -values adjusted for search volume

set-level		cluster-level			peak-level					mm	mm	mm	
p	c	$p_{FWE-corr}$	$q_{FDR-corr}$	k_E	p_{uncorr}	$p_{FWE-corr}$	$q_{FDR-corr}$	T	(Z_{α})	p_{uncorr}			

no suprathreshold clusters

table shows 3 local maxima more than 8.0mm apart

Height threshold: $T = 4.30$, $p = 0.001$ (1.000)	Degrees of freedom = [1.0, 9.0]
Extent threshold: $k = 0$ voxels	FWHM = 9.3 10.4 10.8 mm mm mm; 3.1 3.5 3.6 {voxels}
Expected voxels per cluster, $\langle k \rangle = 1.852$	Volume: 1294110 = 47930 voxels = 1118.6 resels
Expected number of clusters, $\langle c \rangle = 26.94$	Voxel size: 3.0 3.0 3.0 mm mm mm; (resel = 38.50 voxels)
FWEp: 10.666, FDRp: Inf, FWEc: Inf, FDRc: Inf	