

Figure S 1: Relationship between the number of taxa and subtaxa number for the Animalia

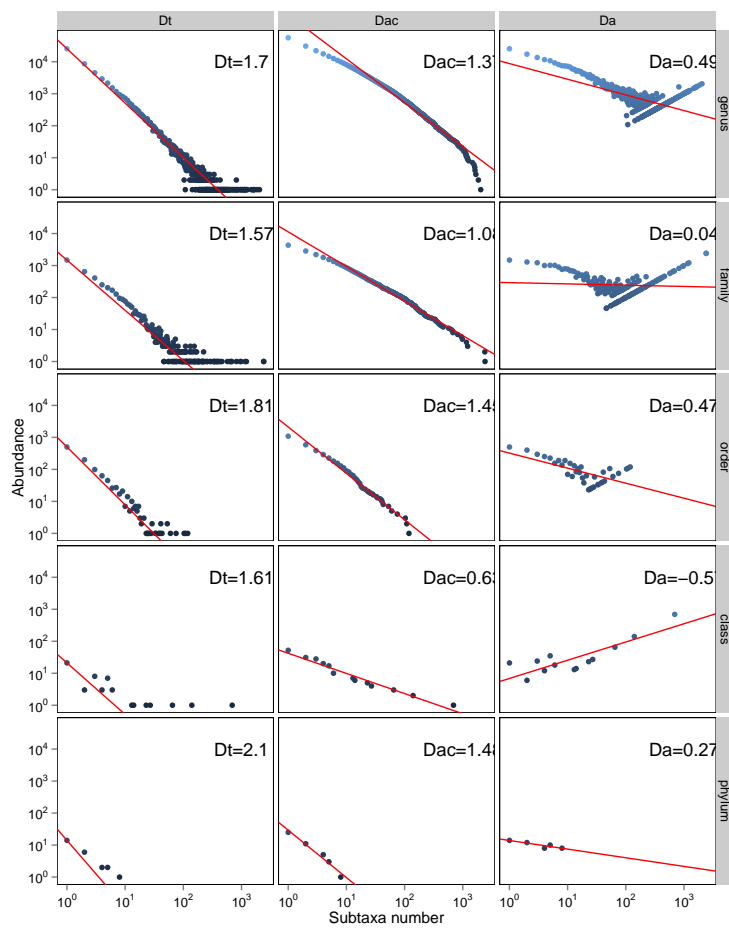


Figure S 2: Relationship between the number of taxa and subtaxa number for the Plantae

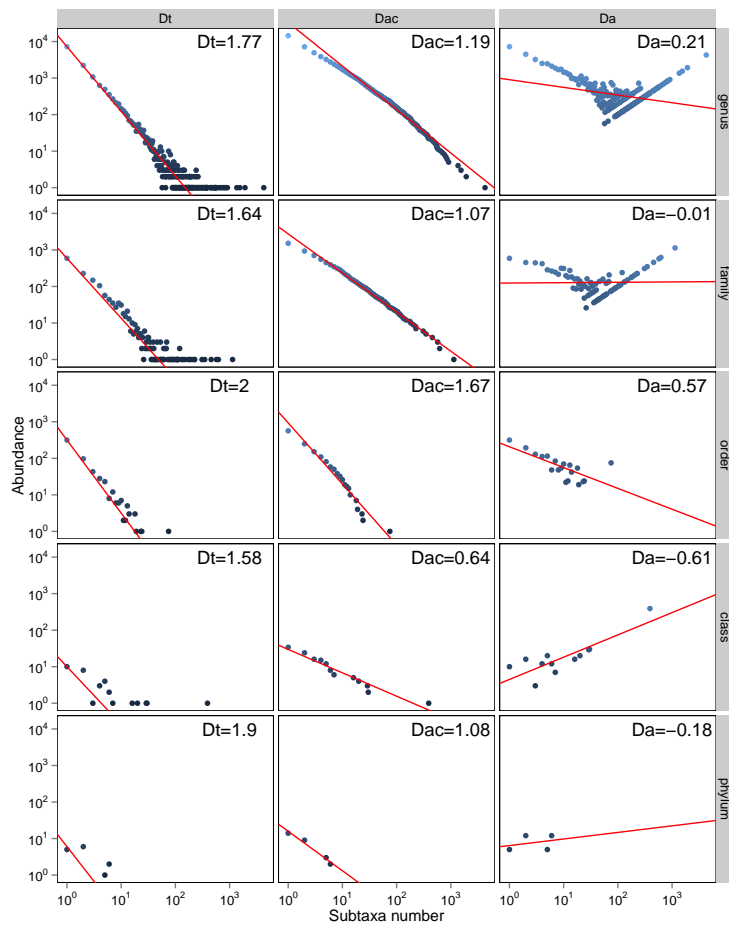


Figure S 3: Relationship between the number of taxa and subtaxa number for the Fungi

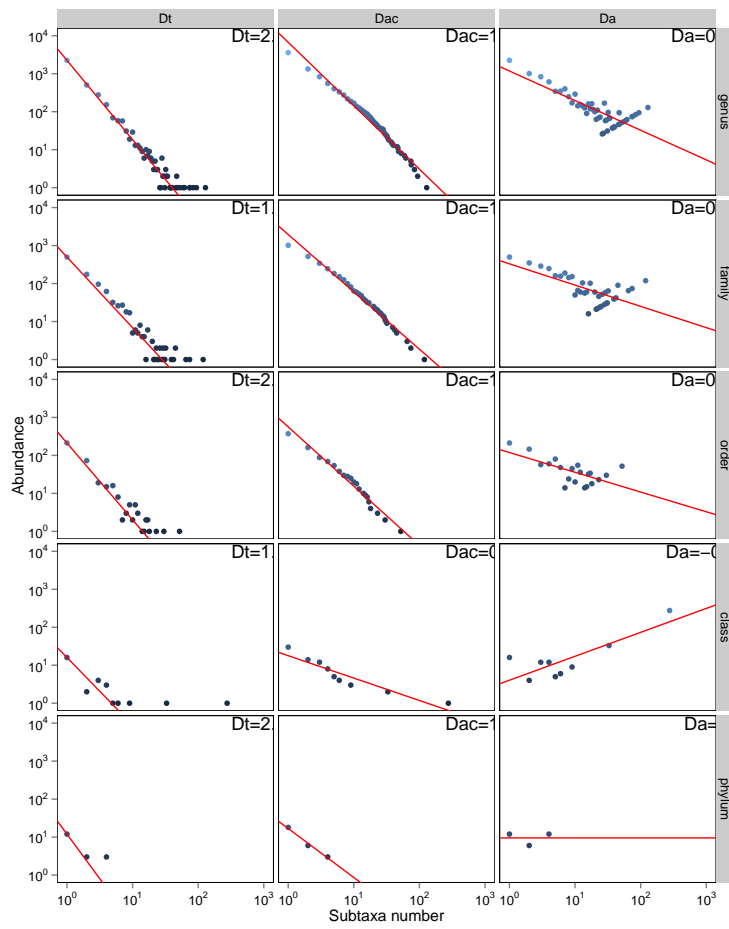


Figure S 4: Relationship between the number of taxa and subtaxa number for the Chromista

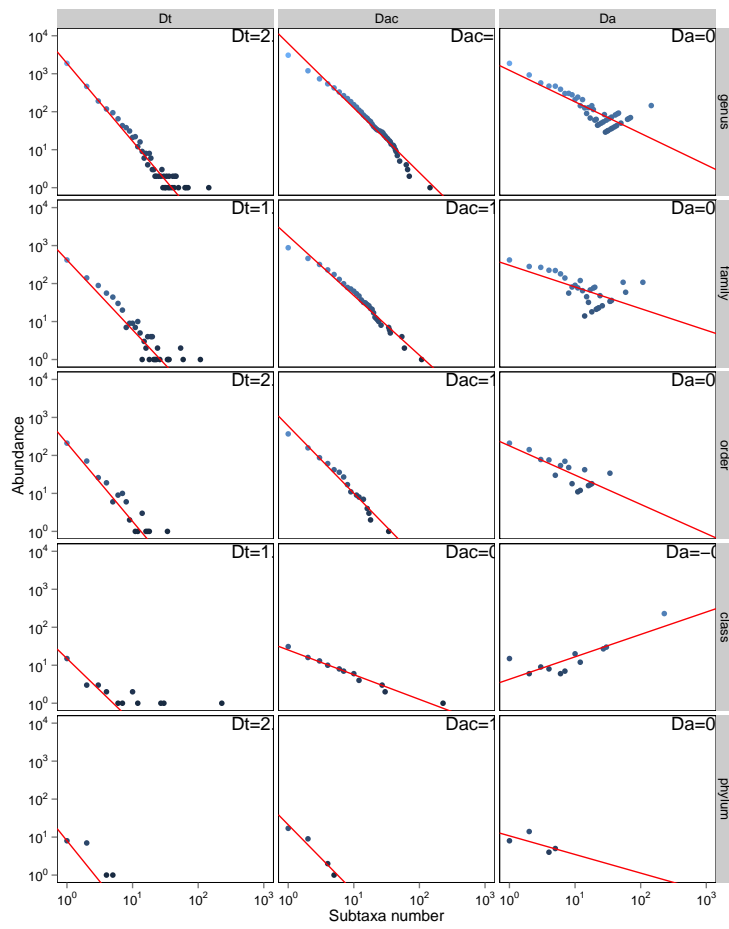


Figure S 5: Relationship between the number of taxa and subtaxa number for the Protozoa

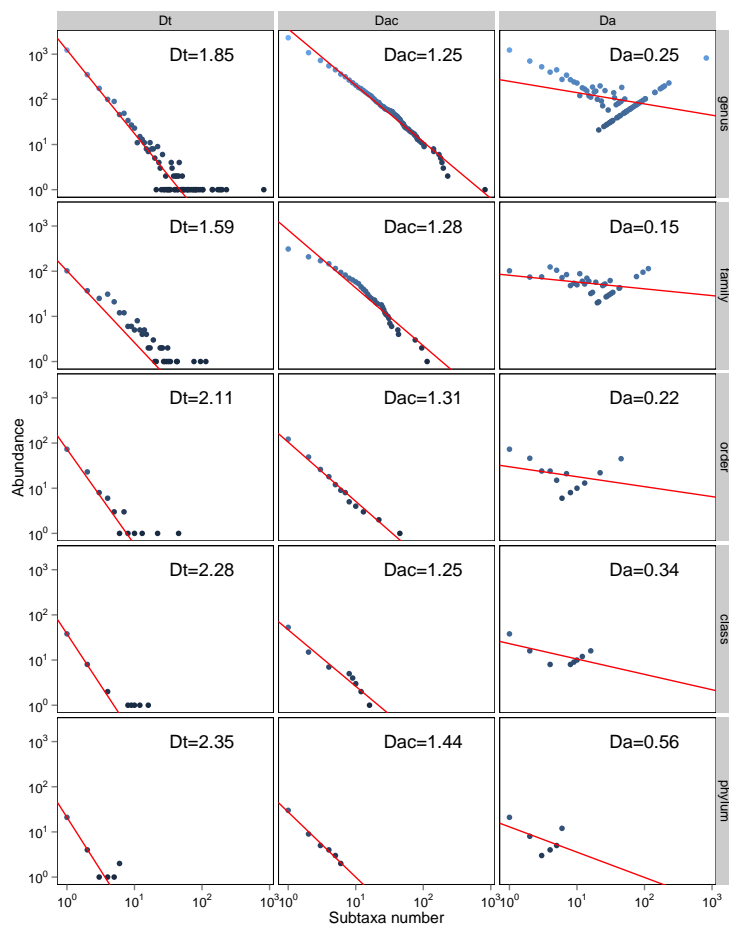


Figure S 6: Relationship between the number of taxa and subtaxa number for the Bacteria

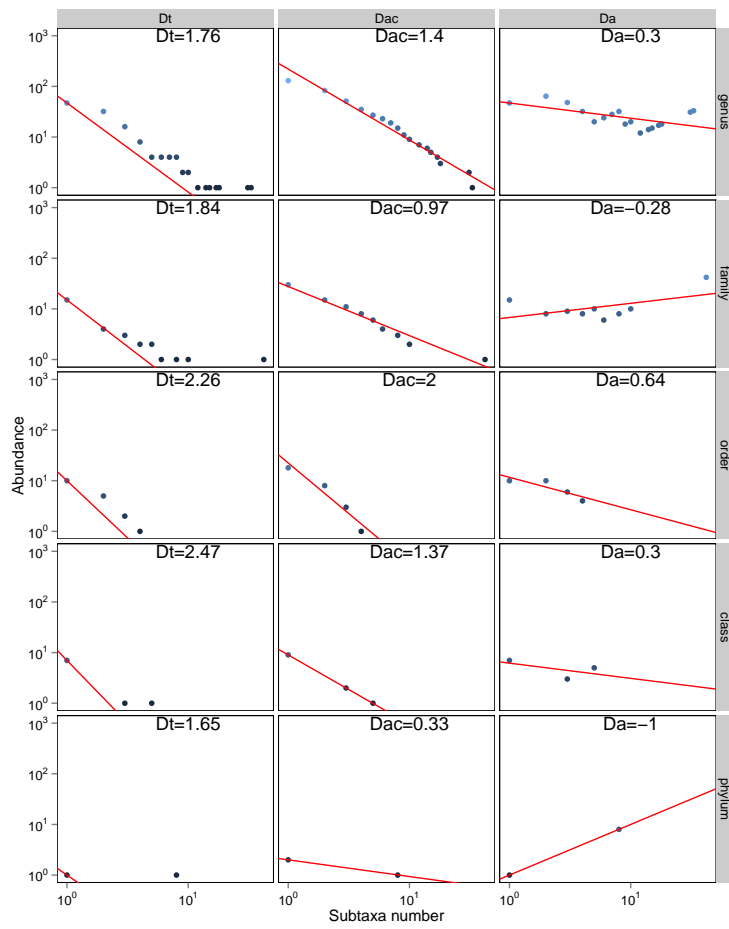


Figure S 7: Relationship between the number of taxa and subtaxa number for the Archaea

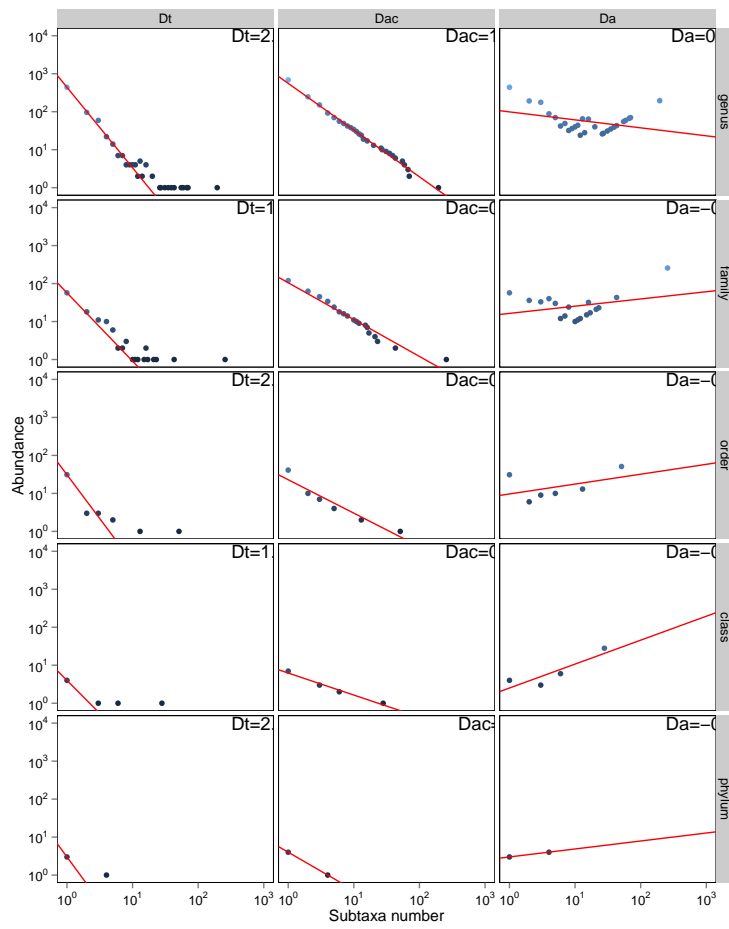


Figure S 8: Relationship between the number of taxa and subtaxa number for the Virus